



FLOGARD® LOPRO™

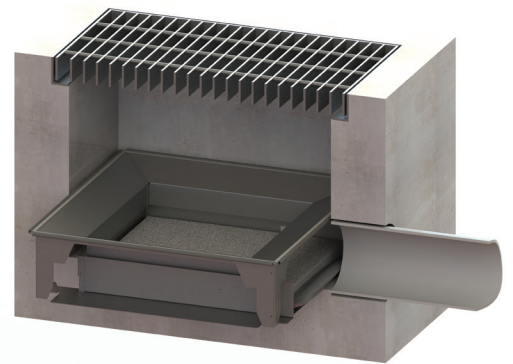
Catch Basin Insert Filter

Matrix-Style Filter Ideal for Shallow Inlets

The FloGard LoPro Catch Basin Insert is a modular matrix-style filter ideal for shallow inlets that collect sediment, debris and petroleum hydrocarbons from stormwater runoff. It includes a UV-resistant woven geo-textile wrapped around a perforated core encapsulating a sorbent material which is easily replaced, providing for flexibility, ease of maintenance and economy.

For urban sites with shallow drainage, particularly at property perimeters or across entrance driveways, the FloGard LoPro Catch Basin Insert provides an effective solution to comply with stormwater runoff issues. The units perform as an effective filtering device at low ("first flush") flows, and because of the built-in high-flow bypass, will not impede the drainage system's maximum design flow.

FloGard LoPro Catch Basin Inserts are available in sizes to fit most common catch basins or are available as complete units including a precast concrete catch basin with traffic-rated grate.



SPECIFICATIONS

MODEL	CATCH BASIN ID (in)	SOLIDS STORAGE CAPACITY (cu ft)	FILTERED FLOW (cfs)	TOTAL BYPASS CAPACITY (cfs)
FG-M12	12 x 12	0.05	0.05	0.50
FG-M18	18 x 18	0.10	0.10	1.00
FG-M24	24 x 24	0.30	0.30	1.70
FG-M2436	24 x 36	0.40	0.50	2.30
FG-M30	30 x 30	0.60	0.60	2.60
FG-M36	36 x 36	0.80	0.90	4.10
FG-M3648	36 x 48	1.10	1.30	4.60
FG-M48	48 x 48	1.60	1.80	6.60