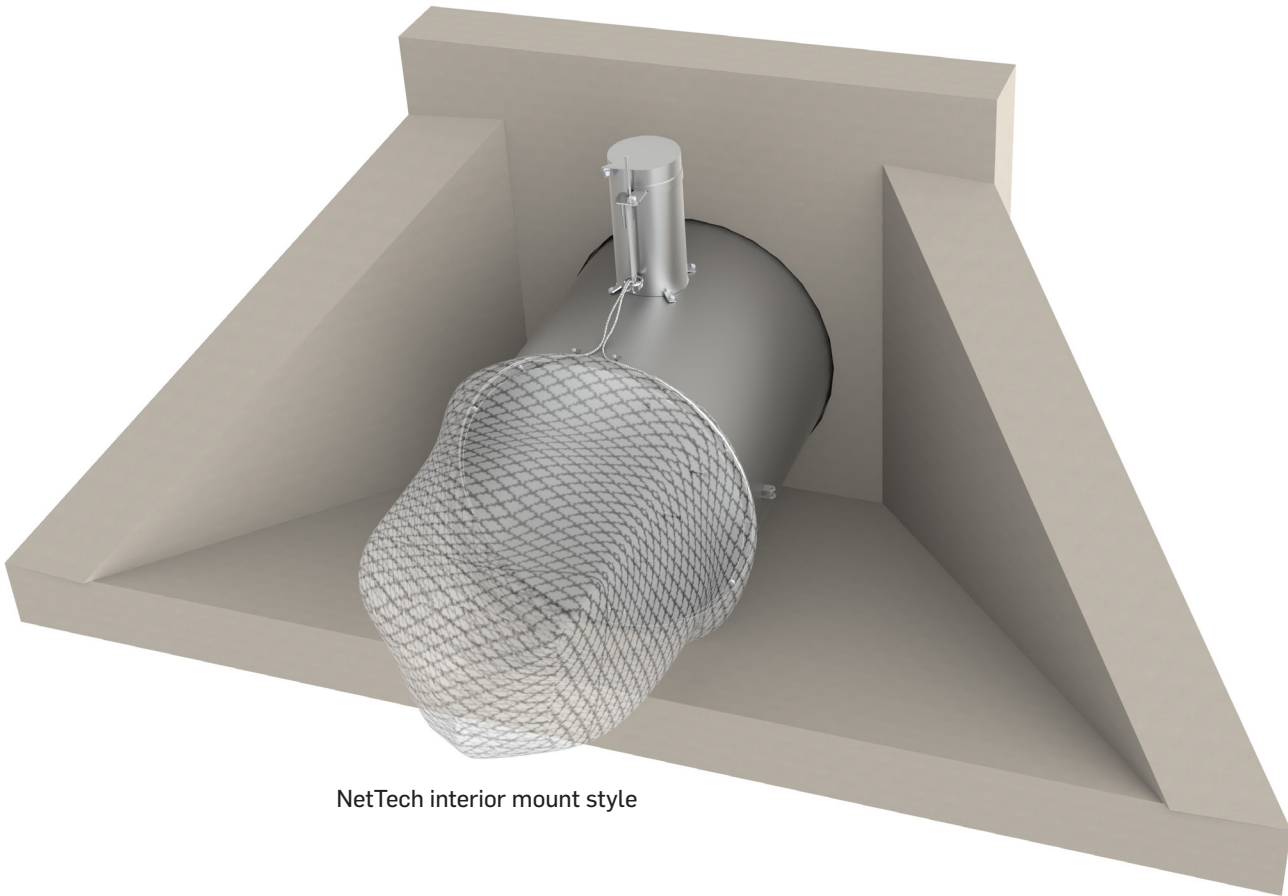


# NETTECH™ TRASH CAPTURE DEVICE

*Gross Pollutant Trap (GPT) for Stormwater Outlets, Outfalls & Channels*



NetTech interior mount style

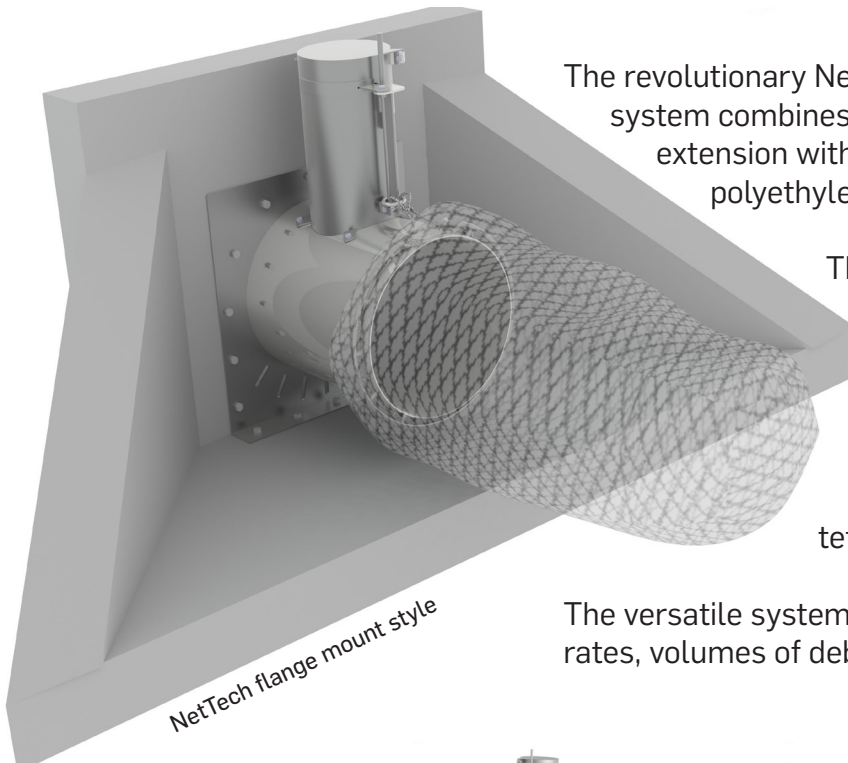
## FEATURES:

- Easy installation and maintenance
- Lack of human contact with intercepted pollutants
- Water drains completely from device, preventing possible odor, infection or mosquito breeding
- Debris cannot be re-entrained, as overtopping is not possible
- Litter is stored dry, preventing anaerobic decomposition
- Custom sizes available for retrofit applications



Call us today **(800) 579-8819** or visit our website for detailed product information, drawings and design tools at [www.oldcastlestormwater.com](http://www.oldcastlestormwater.com)

## Capture Gross Pollutant Debris Without Flow Interruptions

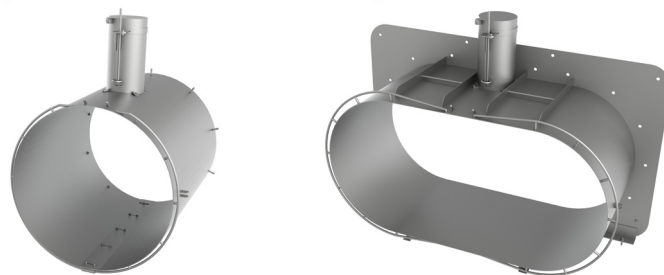


The revolutionary NetTech™ gross pollutant trap (GPT) system combines a marine-grade, stainless-steel pipe extension with a heavy-duty, UV-stabilized polyethylene net.

The pipe extension incorporates a unique mechanism that allows the net to release in the event it becomes fouled with intercepted debris.

The net component automatically detaches and then chokes off on a short tether, allowing the pipe to flow normally.

The versatile system can be customized to suit various flow rates, volumes of debris or retrofit applications.



Available in round, elliptical or customized to fit your needs



NetTech installation for Vallejo Sanitation & Flood Control District by Oldcastle's maintenance division, Drainage Protection Systems (DPS) in Vallejo, California