



STORM WATER PERKFILTER™ Catch Basins

Cartridge Filtration Proven to Reduce Pollutant Loading in Runoff from Urban Developments

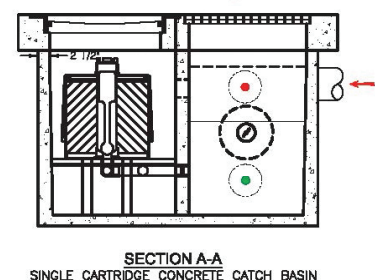
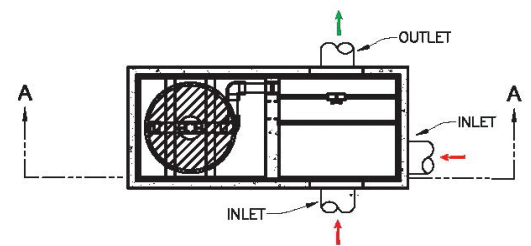
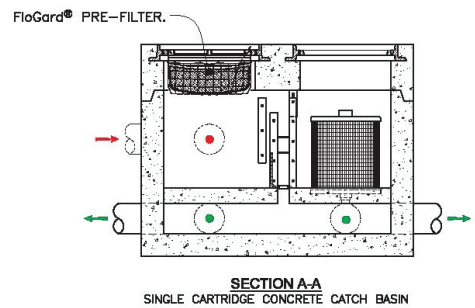
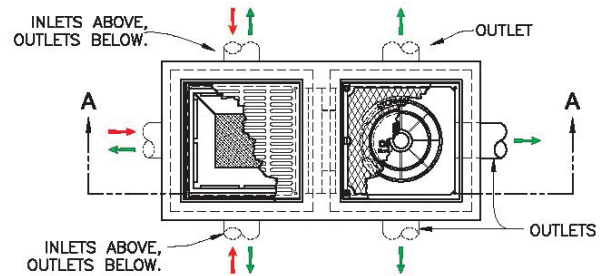
The PerkFilter catch basin is easy to incorporate into your design with numerous inlet/outlet pipe configurations. System can receive inlet pipes into treatment chamber from three sides. And unlike competitive designs, it can also incorporate inlet pipes for not-to-be-treated-water from any direction.

OLDCASTLE INFRASTRUCTURE

- Over three times the inlet and outlet pipe configurations versus the competition
- Outlets can be positioned on any wall, unlike competitive designs
- Both steel and concrete vault constructions available, with one to four cartridges each
- Raised false floor can accommodate pass through piping

THE COMPETITION

- Fewer pipe layout and material options
- Outsourced manufacturing



Captures and Retains Total Suspended Solids, Phosphorus, Petroleum Hydrocarbons, Metals and Other Target Constituents Close to the Source, Reducing the Total Downstream Discharge Load

CONCRETE ADVANTAGES

- Corrosion-resistant construction
- Site-adjustable lid capability
- Accommodates heavier loads without reinforced concrete collar
- Structurally better suited for applications deeper than 5'
- Extended service life at similar cost

APPLICATIONS

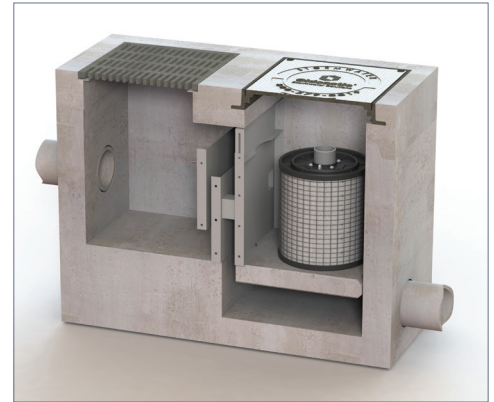
Typical installation locations include:

- Drop inlets or vaults in commercial or residential developments
- Industrial applications
- Pre- or post-treatment for retention/detention systems

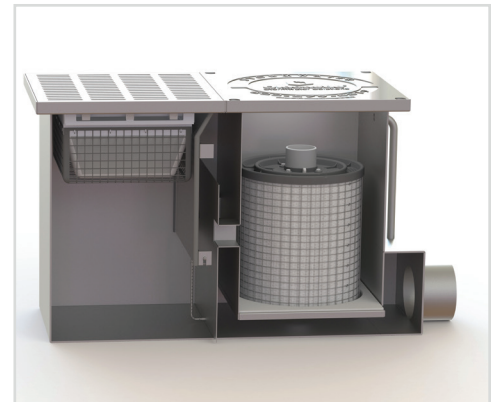
PERFORMANCE

Field-tested removal efficiencies of:

- Total Suspended Solids > 80%
- Total Phosphorus > 60%



Concrete Catch Basin



Steel Catch Basin

STANDARD CARTRIDGE CAPACITIES

Cartridge Height Inches	Treatment Capacity (gpm) at Media Surface Loading Rate of:	
	1.5 gpm/ft ² **	2.5 gpm/ft ² **
12	6.8	12
18	10.2	18
*24	13.6	24
*30	17	30

*Standard cartridge heights are 12 & 18 inches.

24 & 30 inch cartridges use modular stacks.

**Depending on regulatory sizing.

Washington State Department of Ecology

- TAPE/GULD for basic treatment (TSS) and phosphorus treatment

New Jersey Department of Environmental Protection

- NJCAT certified 80% TSS removal rate

Maryland Department of the Environment

- Approved structural practice for 80% TSS removal

Virginia Department of Environmental Quality

- BMP clearinghouse 50% credit for phosphorus reduction

