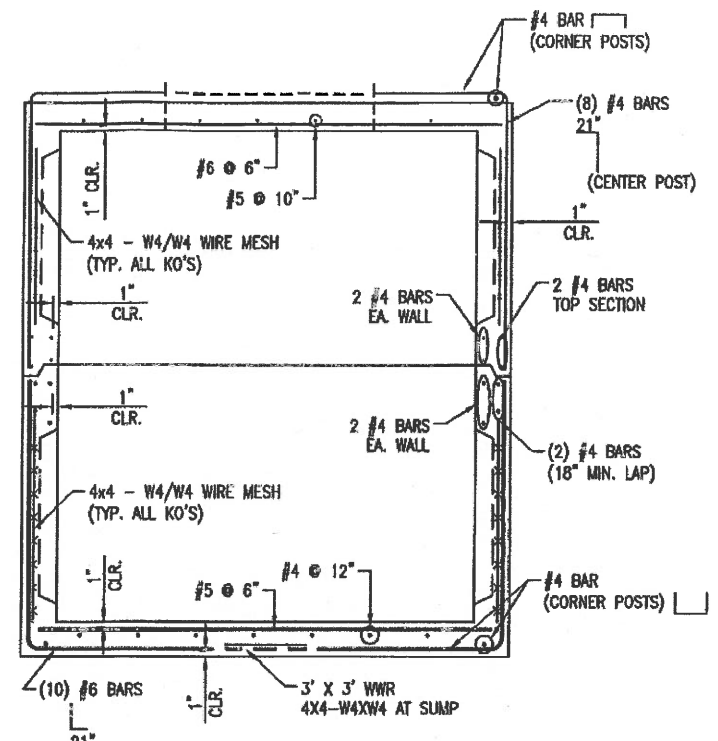
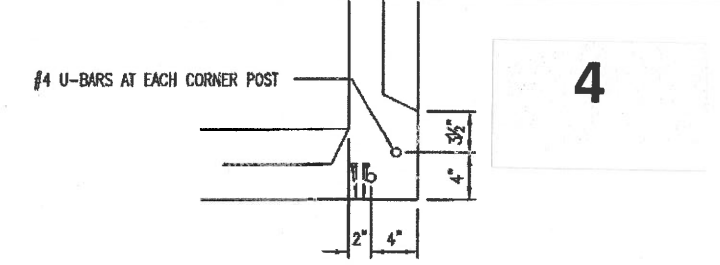


PLAN VIEW
SCALE: 3/8" = 1'-0"

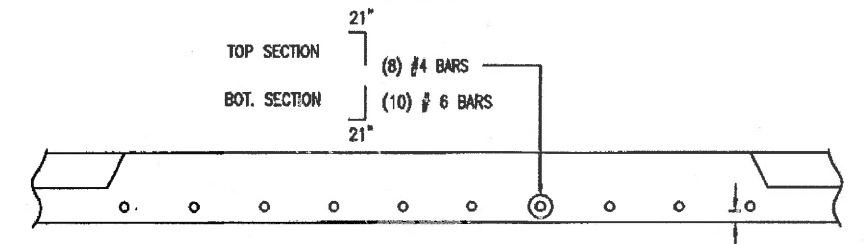


STEEL REINFORCEMENT
SCALE: 3/8" = 1'-0"

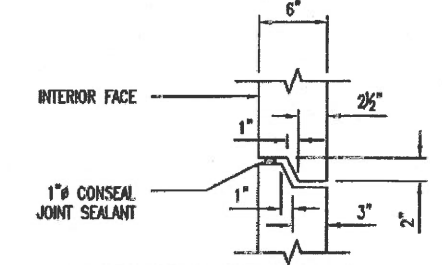
STRUCTURE WEIGHTS	
STRUCTURE WEIGHT	STRUCTURE TYPE
7.87 TONS	BASE SECTION
8.77 TONS	TOP SECTION



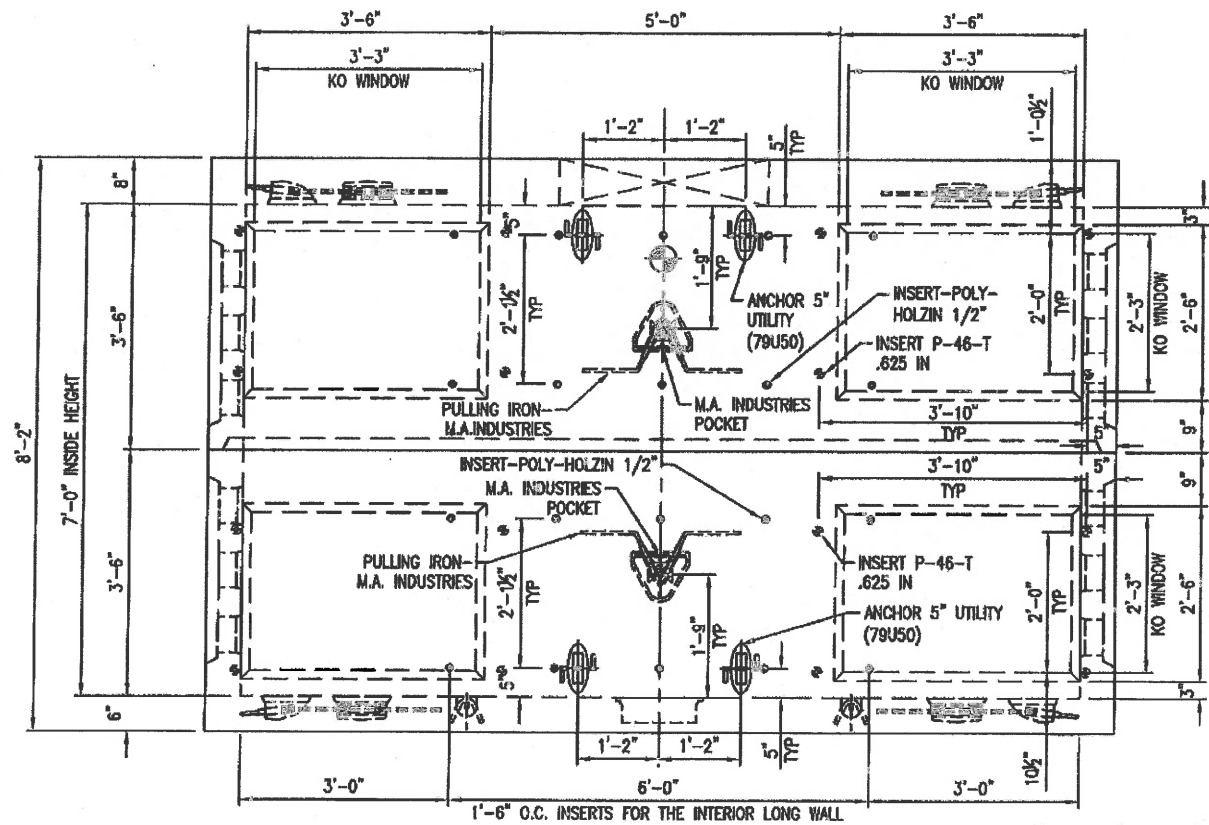
CORNER POST DETAIL
SCALE: 3/4" = 1'-0"



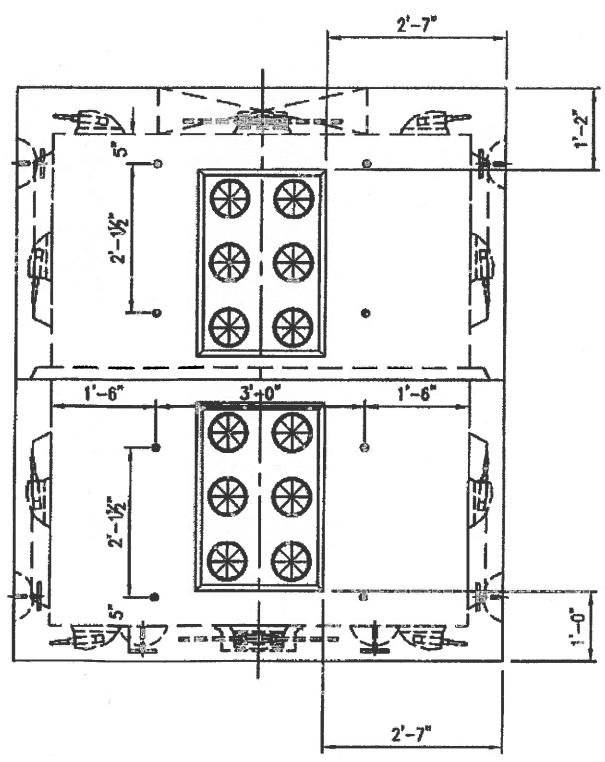
CENTER POST BEAM DETAIL
SCALE: N.T.S.



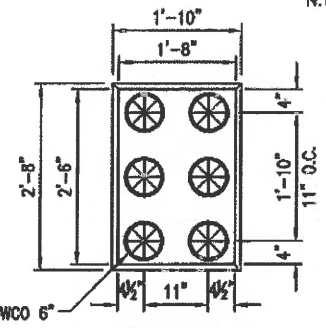
SHIPLAP JOINT DETAIL
N.T.S.



VIEW A
VIEW C IS A MIRROR IMAGE
SCALE: 3/8" = 1'-0"



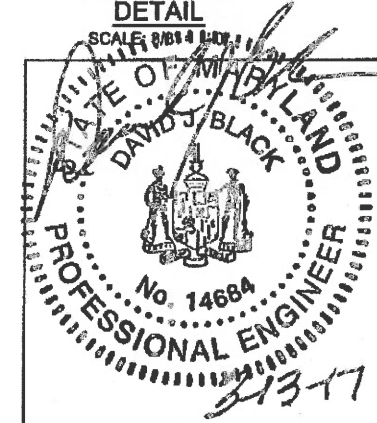
VIEW B
VIEW D IS TYPICAL
SCALE: 3/8" = 1'-0"



DUCT BANK DETAIL
SCALE: 3/8" = 1'-0"

- DESIGN NOTES:**
1. TOP SECTION CONCRETE MIN. COMPRESSIVE STRENGTH 6000 PSI @ 28 DAYS & BOTTOM SECTION 5000 PSI.
 2. STEEL REINFORCEMENT REBAR - ASTM 615, GRADE 60.
 3. DESIGN LOADING PER BALTIMORE CITY HS-25 DESIGN CRITERIA.
 4. EARTH COVER = 1'-0" - 5'-0"
 5. GROUND WATER @ 3'-0" BELOW GRADE.

REVISION TABLE			
REV	REV DATE	BY	DESCRIPTION
1			
2			



PROFESSIONAL CERTIFICATION, I, DAVID J. BLACK, HEREBY CERTIFY THAT THESE DOCUMENTS WERE PREPARED OR APPROVED BY ME, AND THAT I AM A DULY LICENSED PROFESSIONAL ENGINEER UNDER THE LAWS OF THE STATE OF MARYLAND, LICENSE NO. 14684, EXPIRATION DATE NOVEMBER 18, 2017

Oldcastle Precast®
CHESAPEAKE REGION
815 MASSAPONIX CHURCH ROAD, FREDERICKSBURG, VA 22407
OFFICE 540-868-8300, FAX 540-855-0219
181 TRIMBLE ROAD, EDWARDSVILLE, MD 21820
OFFICE 410-286-4200, FAX 410-812-1214

THIS DOCUMENT IS THE PROPERTY OF OLDCASTLE PRECAST, INC. IT IS LOANED TO YOU FOR YOUR USE ONLY AND SHALL NOT BE REPRODUCED OR TRANSMITTED IN ANY FORM OR BY ANY MEANS, ELECTRONIC OR MECHANICAL, INCLUDING PHOTOCOPYING, RECORDING, OR BY ANY INFORMATION STORAGE AND RETRIEVAL SYSTEM. WITHOUT THE WRITTEN PERMISSION OF OLDCASTLE PRECAST, INC. ALL RIGHTS RESERVED.

6'-0" x 12'-0" x 3'-6" BASE & TOP W/ 6" TERMS
SUBMITTAL - LAYOUT

BG&E 0121273-0121266					
DATE	SNPS	DRAWN	ENGINEER	CHECKED	SALES ORDER
03/10/17		CR	DJB	DJB	
DRAWING NUMBER			REVISION		SHEET
0121273-0121266			REV DATE		1 OF 1