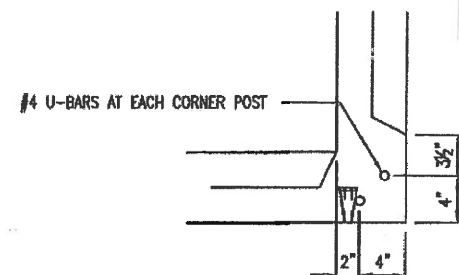
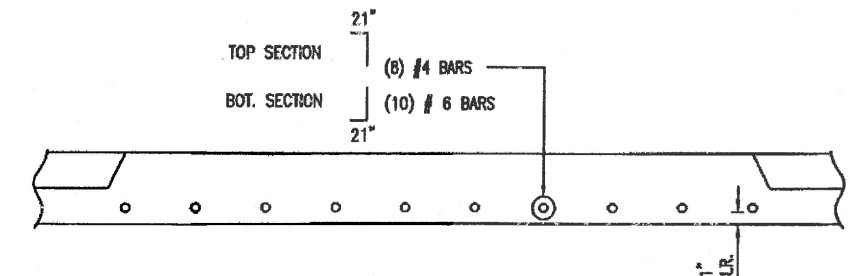


STRUCTURE WEIGHTS	
STRUCTURE WEIGHT	STRUCTURE TYPE
8.93 TONS	BASE SECTION
9.93 TONS	TOP SECTION

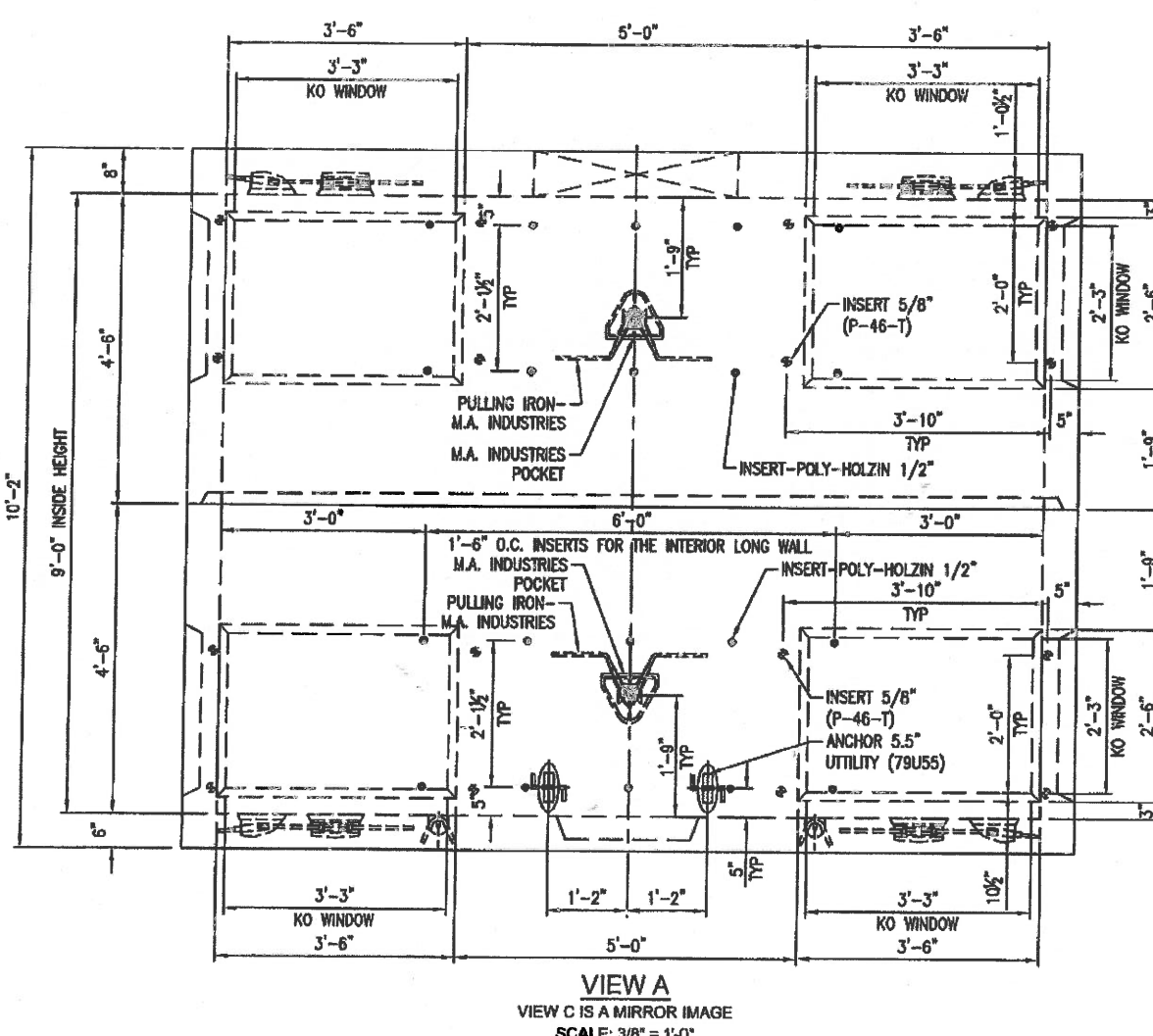
5



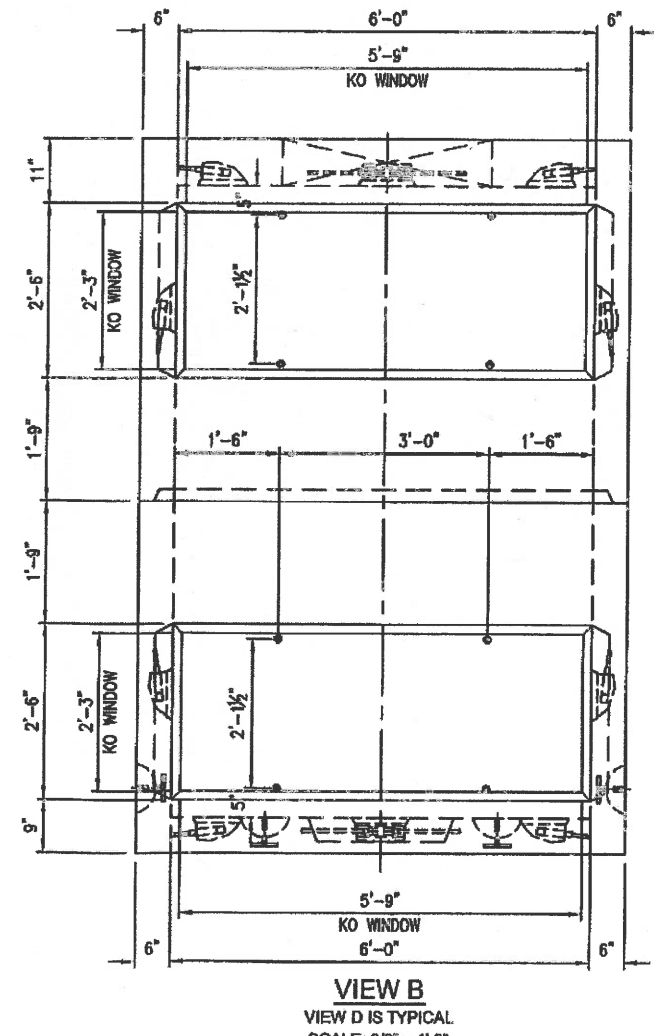
CORNER POST DETAIL
SCALE: 3/4" = 1'-0"



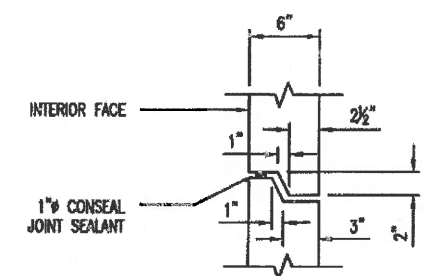
CENTER POST BEAM DETAIL
SCALE: N.T.S.



VIEW A
VIEW C IS A MIRROR IMAGE
SCALE: 3/8" = 1'-0"

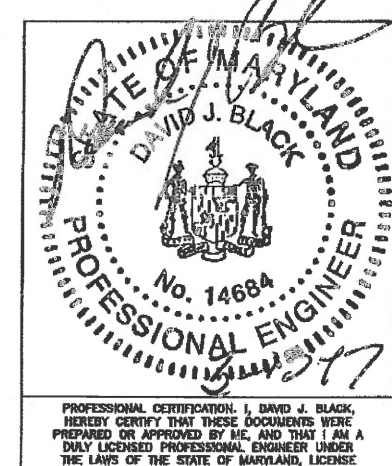


VIEW B
VIEW D IS TYPICAL
SCALE: 3/8" = 1'-0"



SHIPLAP JOINT DETAIL
N.T.S.

- DESIGN NOTES:**
1. TOP SECTION CONCRETE MIN. COMPRESSIVE STRENGTH 6000 PSI @ 28 DAYS & BOTTOM SECTION 5000 PSI.
 2. STEEL REINFORCEMENT REBAR - ASTM 615, GRADE 60.
 3. DESIGN LOADING PER BALTIMORE CITY HS-25 DESIGN CRITERIA.
 4. EARTH COVER = 1'-0" - 5'-0"
 5. GROUND WATER @ 3'-0" BELOW GRADE.



REVISION TABLE			
REV	REV DATE	BY	DESCRIPTION
1			

Oldcastle Precast®
CHESAPEAKE REGION
6115 MASSAPONIX CHURCH ROAD, FREDERICKSBURG, VA 22407
OFFICE 540-539-4300, FAX 540-539-2309
1181 TRIBLE ROAD, EDGEWOOD, MD 21040
OFFICE 410-325-4000, FAX 410-412-1214

6'-0" x 12'-0" x 4'-6" BASE & TOP HS-25
SUBMITTAL - LAYOUT

BG&E 0121285-0121280					
DATE	SALES	DRAWN	ENGINEER	CHECKED	SALES ORDER
03/10/17		CR	DJB	DJB	
DRAWING NUMBER			REVISION	SHEET	
0121285-0121280				1 OF 1	

PROFESSIONAL CERTIFICATION: I, DAVID J. BLACK, HEREBY CERTIFY THAT THESE DOCUMENTS WERE PREPARED OR APPROVED BY ME, AND THAT I AM A DULY LICENSED PROFESSIONAL ENGINEER UNDER THE LAWS OF THE STATE OF MARYLAND, LICENSE NO. 14684, EXPIRATION DATE NOVEMBER 10, 2017