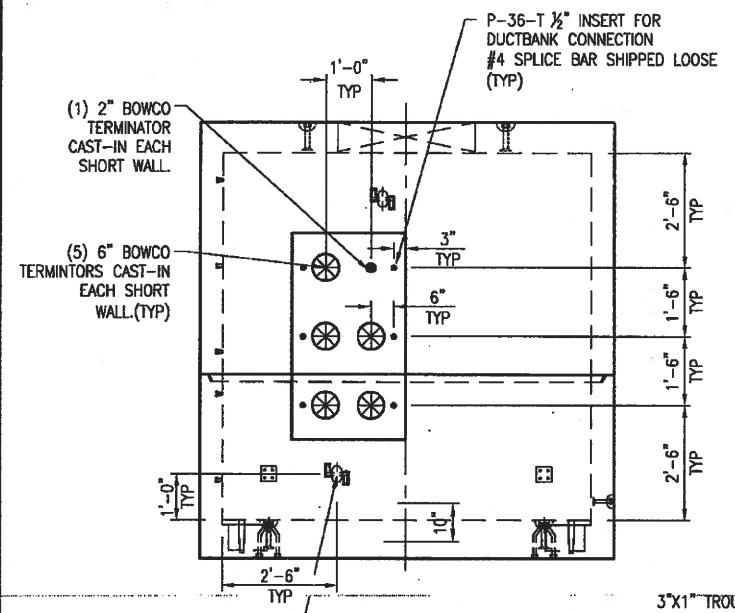


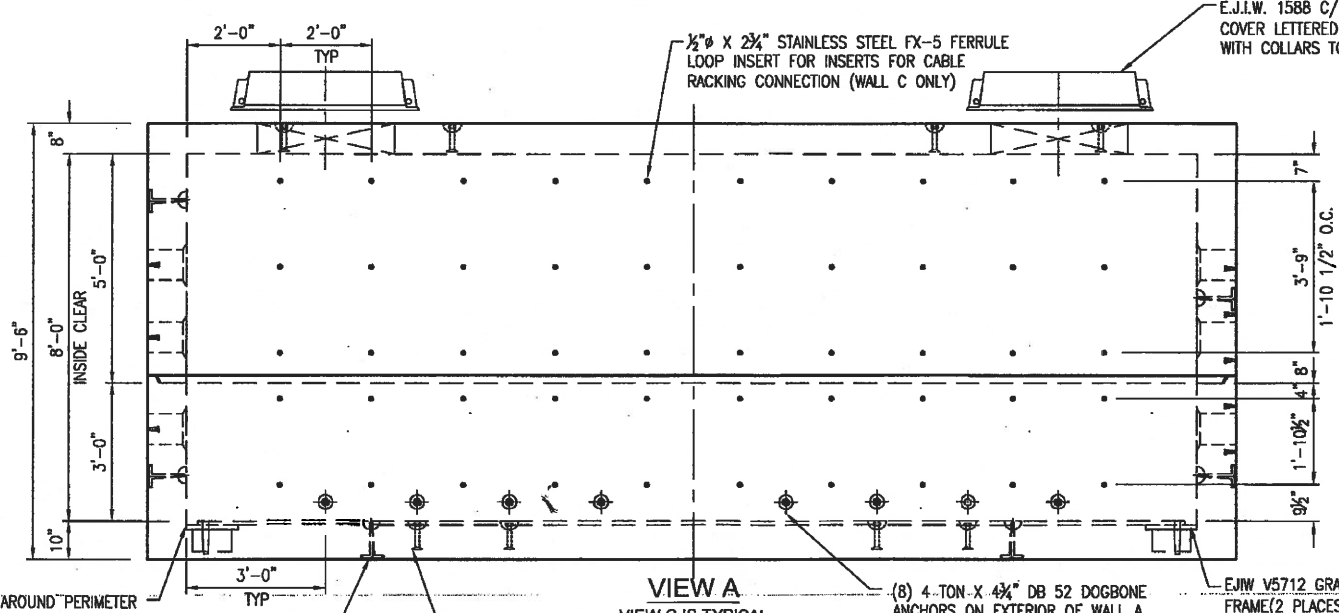
PLAN VIEW
SCALE: 1/4" = 1'-0"

| VAULTS REQUIRED = 24 | | | |
|--|---------|--|---------|
| SHIP LOOSE QUANTITY SHOWN IS FOR 1 VAULT | | | |
| SHIP-LOOSE ITEMS | | | |
| PIN | QTY | DESCRIPTION | AX # |
| | 6 ROLLS | SEALANT 1" X 14.5' CS-102B | 5439200 |
| | 6 ROLLS | WATERSTOP 1" X 14.5' CS-231 | |
| | 12 EA. | #4X36" MB SPLICE BAR | 5107605 |
| | 2 EA. | EJW 36"Ø 1588 C/Z FRAME & COVER BOLTED & CASKETED "BGE HIGH VOLTAGE" | |
| STRUCTURE WEIGHTS | | | |
| STRUCTURE WEIGHT | | STRUCTURE TYPE | |
| 23.72 TONS | | TOP SECTION | |
| 21.64 TONS | | BASE SECTION | |

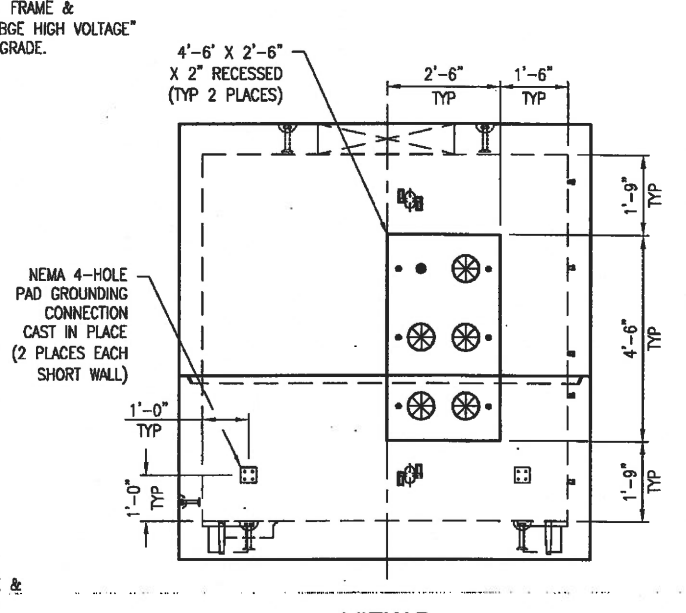
8



VIEW D
SCALE: 1/4" = 1'-0"



VIEW A
VIEW C IS TYPICAL
SCALE: 1/4" = 1'-0"



VIEW B
(TYPICAL DUCTBANK REINFORCEMENT OUTSIDE LAYER SHOWN)
SCALE: 1/4" = 1'-0"

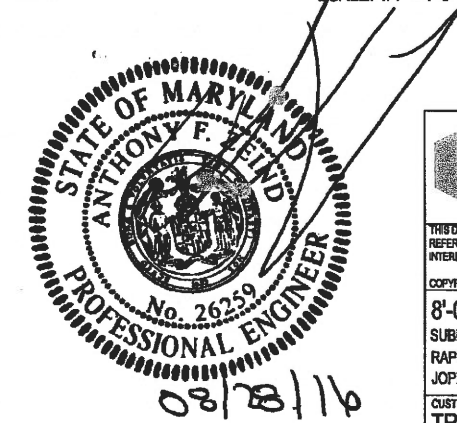
COAT EXTERIOR WITH COOPER CREEK SEALER SP WATERPROOFING COAL TAR EMULSION, 3 APPLICATIONS TO ACHIEVE 24 MIL. IN ACCORDANCE WITH MANUFACTURER'S RECOMMENDATIONS. (PROVIDED AND INSTALLED BY OLDCASTLE)

NOTES TO CONTRACTOR:

- PLEASE VERIFY THAT TERMINATOR CONFIGURATION SHOWN HEREIN IS ADEQUATE FOR ALL VAULTS.
- PLEASE ENSURE THAT AN ADEQUATE BEARING SURFACE IS PROVIDED (i.e. LEVEL AND COMPACTED) PER PROJECT SPECS.
- CONTRACTOR RESPONSIBLE FOR SLOPED FLOOR, IF REQUIRED.
- CONTRACTOR RESPONSIBLE FOR APPLYING INTERIOR SURFACE SEALANT(SUCH AS THOROSEAL) IF REQUIRED.
- CONTRACTOR SHALL BE RESPONSIBLE FOR GROUTING JOINTS, IF REQUIRED.
- CONTRACTOR TO ENSURE EQUAL TENSION IN ALL 8 LIFTERS WHILE SETTING PIECES IN ACCORDANCE WITH OLDCASTLE PRECAST INC'S INSTRUCTIONS ON BACK OF SHIP TICKET.

| REVISION TABLE | | | |
|----------------|----------|----|-------------|
| REV | REV DATE | BY | DESCRIPTION |
| 1 | | | |
| 2 | | | |
| 3 | | | |
| 4 | | | |

COLLARS TO GRADE AVAILABLE SEE OLDCASTLE QUOTE FOR PRICING



Professional Certification. I hereby certify that these documents were prepared or approved by me, and that I am a duly licensed professional engineer under the laws of the State of Maryland.
License No. 26259 Expiration Date 7-31-2017

Oldcastle Precast
5115 MASSAPONAX CHURCH RD. FREDERICKSBURG, VA 22408
OFFICE 540-888-4300, FAX 540-888-2389

THIS DOCUMENT IS THE PROPERTY OF OLDCASTLE PRECAST, INC. IT IS SUBMITTED FOR REFERENCE PURPOSES ONLY AND SHALL NOT BE USED IN ANY WAY INJURIOUS TO THE INTERESTS OF SAID COMPANY.

COPYRIGHT © 2010 OLDCASTLE PRECAST, INC. ALL RIGHTS RESERVED.

8'-0" x 22'-0" x 8'-0" SPLICING VAULT
SUBMITTAL LAYOUT
RAPHAEL TO JOPPATOWN 115 KV XLPE CABLE PROJECT
JOPPA, MD 21085

CUSTOMER
TRAFFORD CORPORATION

| DATE | SALES | DRAWN | ENGINEER | CHECKED | SALES ORDER |
|-----------------|-------|-------|----------|---------|-------------|
| 12-9-15 | BH | LWP | AFZ | --- | 38272 |
| DRAWING NUMBER | | | | | REVISION |
| 365-S038272-001 | | | | | REV DATE |
| | | | | | 1 OF 2 |