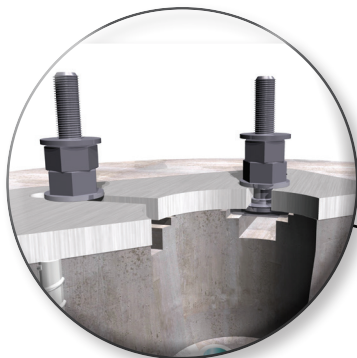
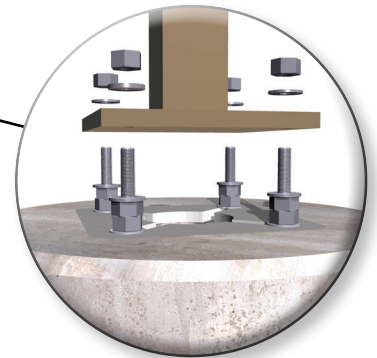




A pre-engineered universal foundation for poles, pre-packaged with bolts;  
your one-stop source for a readily available solution



**Universal Connection**  
Facilitates all bolt diameters  
from 7.5"-11"



**Pre-packaged**  
3/4" & 1" bolts, nuts, and  
washers assemblies



**Easy Access**  
to conduit



**Anti-Rotation Cavities**  
3' cavities

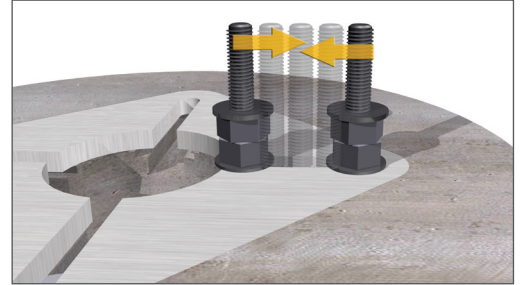
*Same day delivery, installation, connection, and power-on.*

# Control Your Jobsite

*Zero on-site issues for installation of Omni foundations due to rigorous quality controlled standards.*

## Universal Connection

The pre-engineered foundation has an adjustable bolt diameter and pre-packaged bolts. This eliminates coordination with the pole manufacturer, creation of templates, and on-site bolt variability.



## Zero Lead Time

Stocked and readily available for immediate delivery and installation.



## Fast and Easy Installation

The Omni foundation allows for a simplified process, reducing the time from delivery to power-on to under half a day.

1/2 DAY

- Purchase package off the shelf
- Quick delivery
- Set foundation in place - zero curing time
- Immediate connection
- Backfill
- Lights on



## Maximum Pole Height Chart (ft)

		Bolt Circle (in)			
	Pole Type	8"	9"	10"	11"
<b>4 SF EPA</b>	4" Round Pole	37'	39'	42'	37'
	5" Round Pole	34'	36'	38'	34'
	6" Round Pole	31'	34'	36'	32'
	4" Square Pole	32'	34'	37'	33'
	5" Square Pole	29'	32'	34'	30'
	6" Square Pole	27'	29'	31'	28'
<b>6 SF EPA</b>	4" Round Pole	33'	35'	38'	35'
	5" Round Pole	31'	33'	35'	31'
	6" Round Pole	29'	31'	33'	29'
	4" Square Pole	28'	31'	33'	29'
	5" Square Pole	26'	28'	31'	27'
	6" Square Pole	25'	27'	29'	25'
<b>8 SF EPA</b>	4" Round Pole	30'	32'	34'	30'
	5" Round Pole	28'	30'	32'	28'
	6" Round Pole	26'	28'	30'	27'
	4" Square Pole	25'	27'	29'	26'
	5" Square Pole	24'	26'	28'	24'
	6" Square Pole	22'	24'	26'	23'

**Design Method:** ASCE 7-05 (IBC 2009)

**Design Wind Speed = 90 MPH / EPA = 6 SF**

- EPA includes pole and luminaire
- Assumed concrete base is 2 ft diameter protruding 3 ft or less above grade, in soil
- If pole is tapered, use average width/diameter
- Values can be interpolated between tables
- Using 3/4" (grade 55) or 1" (grade 36) F1554 bolts provided by Oldcastle
- Torsion effects are omitted