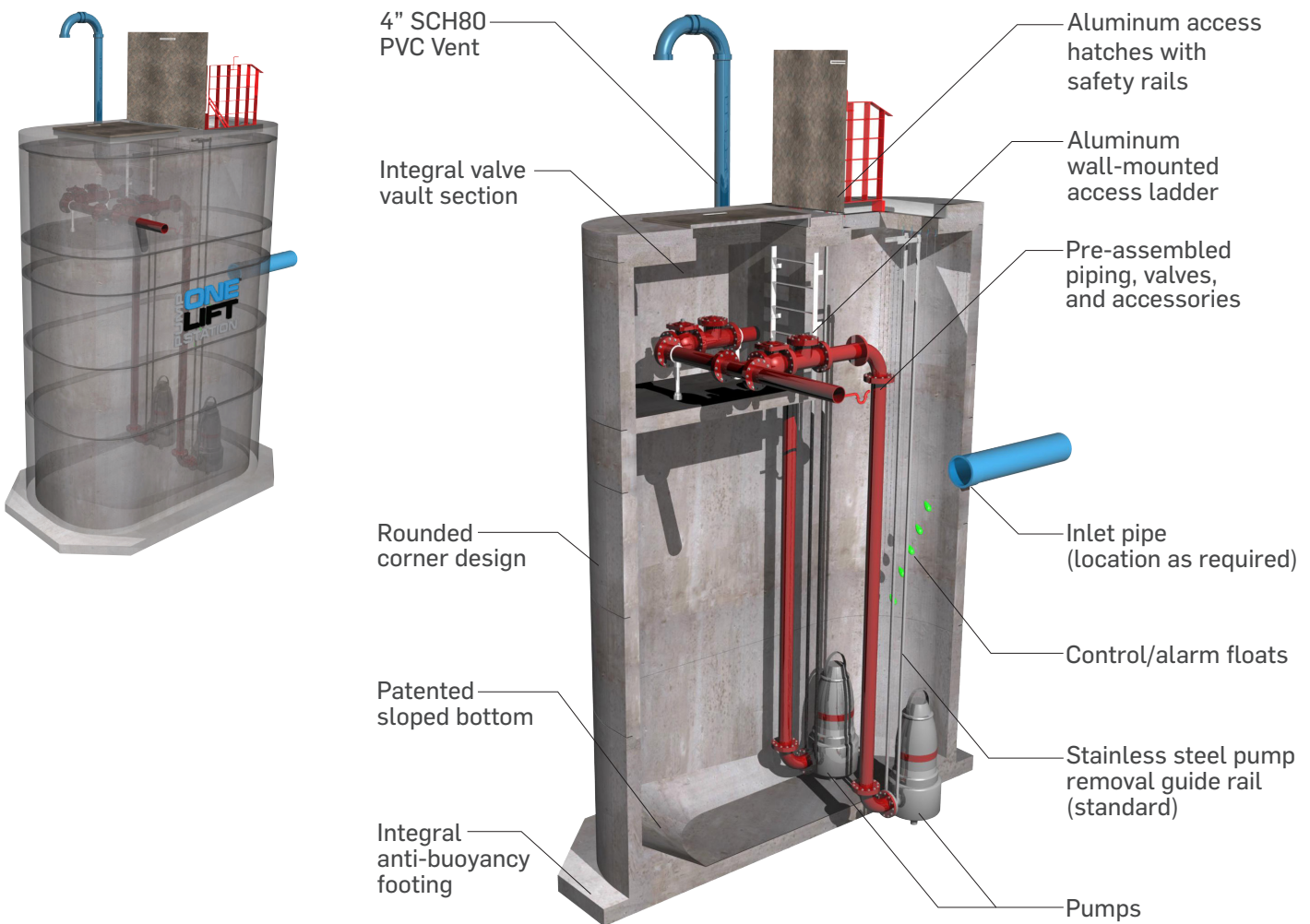


ONE LIFT™ PUMP STATION



FEATURES

Rounded Corner & Sloped Bottom Design

Integral Valve Vault Section

Pre-assembled Equipment Package

Integral Anti-Buoyancy Footing

BENEFITS

Allows for thinner/lighter walls and prevents solids accumulation.

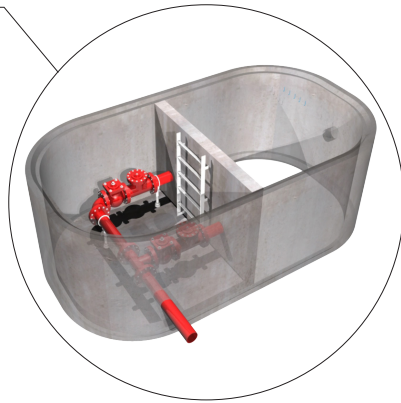
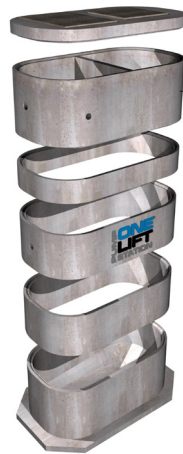
Results in a single structure system reducing footprint up to 50% while eliminating potential differential settlement problems

All piping, valves, and accessories are installed and tested in controlled factory conditions

Designed to prevent flotation without requiring surface resistance of additional weight



For more information please contact our National Sales Office at (888) 965-3227 or send an email to onelift@oldcastle.com



ENGINEERED STRUCTURE

- > Standard, in-stock structural components provide a complete, pre-assembled pump station when it arrives on-site.
- > Precast structural design calculations will be stamped by a registered PE in the project state and submitted for approval.
- > Submittal packages are released quickly to shorten project cycle.

FAST INSTALLATION

- > Integral valve vault section provides an optimized wet well configuration to maximize available spaces.
- > Single smaller excavation, rapid installation, and pre-assembly in factory reduces hole open time and dewatering process.
- > Turnkey package from one supplier with a strong product warranty.

MODEL NUMBER:	RC 509	RC 611
DIMENSIONS:	5' x 9'	6' x 11'
PIPING:	2" to 4" diameter	2" to 6" diameter
MAX. FOOTPRINT w/ COLLAR:	6'-11" x 12'-9"	8'-0" x 13'-10"
MAX. PICK WEIGHT:	11 tons (base)	17 tons (base)
TYPICAL HP & FLOW RATES:	< 7.5 hp & < 200 gpm ±	< 30 hp & < 600 gpm ±
CAPACITY:	297 gal/vft	468 gal/vft

Compared to CONVENTIONAL TWO-STRUCTURE SYSTEMS

	6' DIA. WET WELL	8' DIA. WET WELL	10' DIA. WET WELL
CAPACITY:	211 gal/vft	357 gal/vft	587 gal/vft