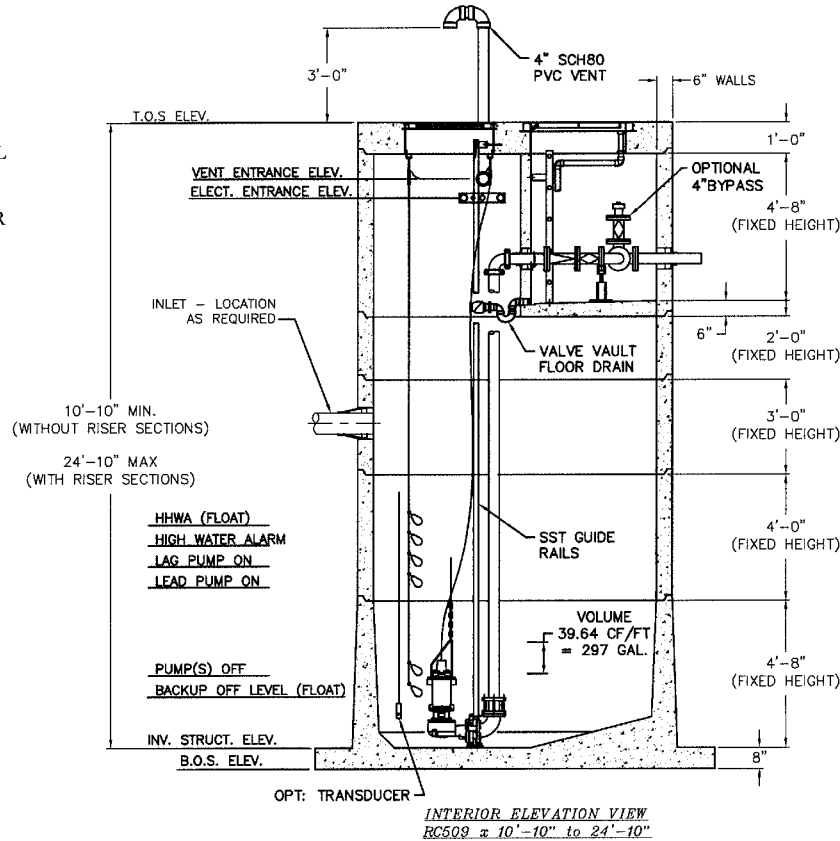


OPTION LIST:

- OVERALL STRUCTURE HEIGHT FROM 10'-10" TO 24'-10" (USING STANDARD HEIGHT STRUCTURAL COMPONENTS)
- 2' & 4' VALVE VAULT EXTENSION RISERS TO INCREASE HEADROOM OR FORCE MAIN COVER WHEN REQUIRED
- H2O LOAD RATING ON HATCHES
- SAFETY GRATING FOR VALVE VAULT HATCH
- LADDER EXTENSION FOR VALVE VAULT ACCESS
- ADMXTURE FOR HYDROGEN SULFIDE PROTECTION
- NON-FIBRATED EXTERIOR DAMPROOFING
- DISCHARGE PIPING & VALVES SIZE 2"-4"
- PIPING MATERIALS (PVC OR DI)
- DISCHARGE POSITION #1, #2 (STD) OR #3
- BYPASS OUTLET/INLET WITH ISOLATION VALVE AND QUICK CONNECT (2"-4")
- DISCHARGE PRESSURE GAUGES
- VENTING WITH ODOR CONTROL
- CONTROL PANEL PLACEMENT
- TRANSDUCER/FLOAT LEVEL CONTROL
- INTERIOR/EXTERIOR JUNCTION BOXES
- ALUMINUM & STAINLESS TRASH BASKETS
- STAINLESS PORTABLE HOIST (300#, 1000#)

SEE COMPLETE LISTING AND OPTION DESCRIPTIONS IN THE ONELIFT SPECIFICATION GUIDE



APPROX. WEIGHTS:

- TOP SLAB = 3 TONS**
- VALVE VAULT = 6.5 TONS**
- **USUALLY TOP SLAB & VALVE VAULT ARE FACTORY SEALED, AND SHIP AS 1-PIECE = 9.5 TONS**
- 2' RISER SECTION - 2 TONS**
- 3' RISER SECTION - 3 TONS**
- 4' RISER SECTION - 4 TONS**
- BASE SECTION W/FLOAT COLLAR & FILLETS - 11.0 TONS**
- 2' VALVE VAULT EXTENSION (NOT SHOWN) - 2.2 TONS**
- 4' VALVE VAULT EXTENSION (NOT SHOWN) - 4.5 TONS**

PATENT PENDING



THIS DOCUMENT IS THE PROPERTY OF OLDCASTLE PRECAST, INC. IT IS LOANED TO YOU FOR YOUR USE ONLY AND SHALL NOT BE USED IN ANY WAY WITHOUT THE INTERESTS OF SAID COMPANY.

COPYRIGHT © 2011 OLDCASTLE PRECAST, INC. ALL RIGHTS RESERVED.

ONELIFT PUMP STATION
RC509 TYPICAL LAYOUT DRAWING

CUSTOMER					
DATE	SALES	DRAWN	ENGINEER	CHECKED	SALES ORDER
X/XX/XX		KWP	KWP	KWP	
DRAWING NUMBER				REVISION	SHEET
324-XXXX-001				REV DATE	1 OF
				7/2013	

REF:
6'ø = 28.27 CF/FT
8'ø = 50.26 CF/FT
RC509 = 39.64 CF/FT
297 Gal/Vert. FT



RC509