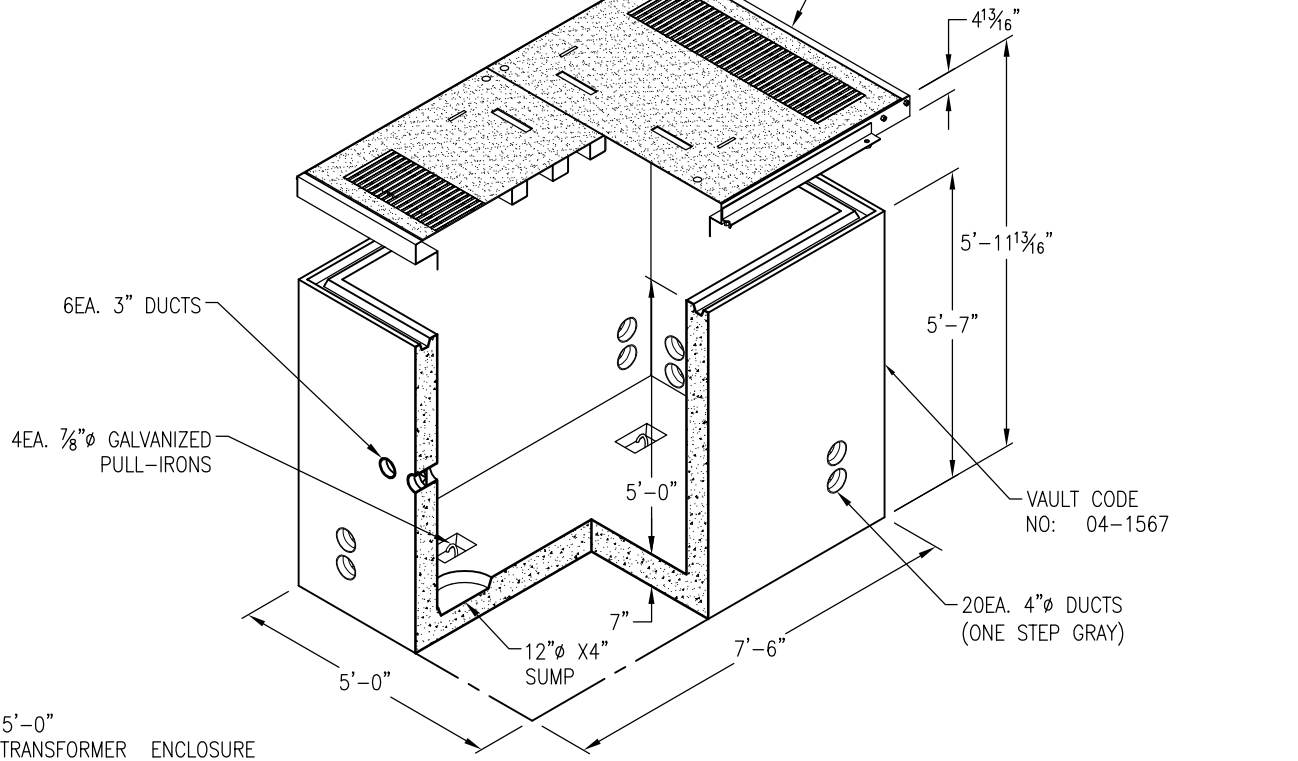
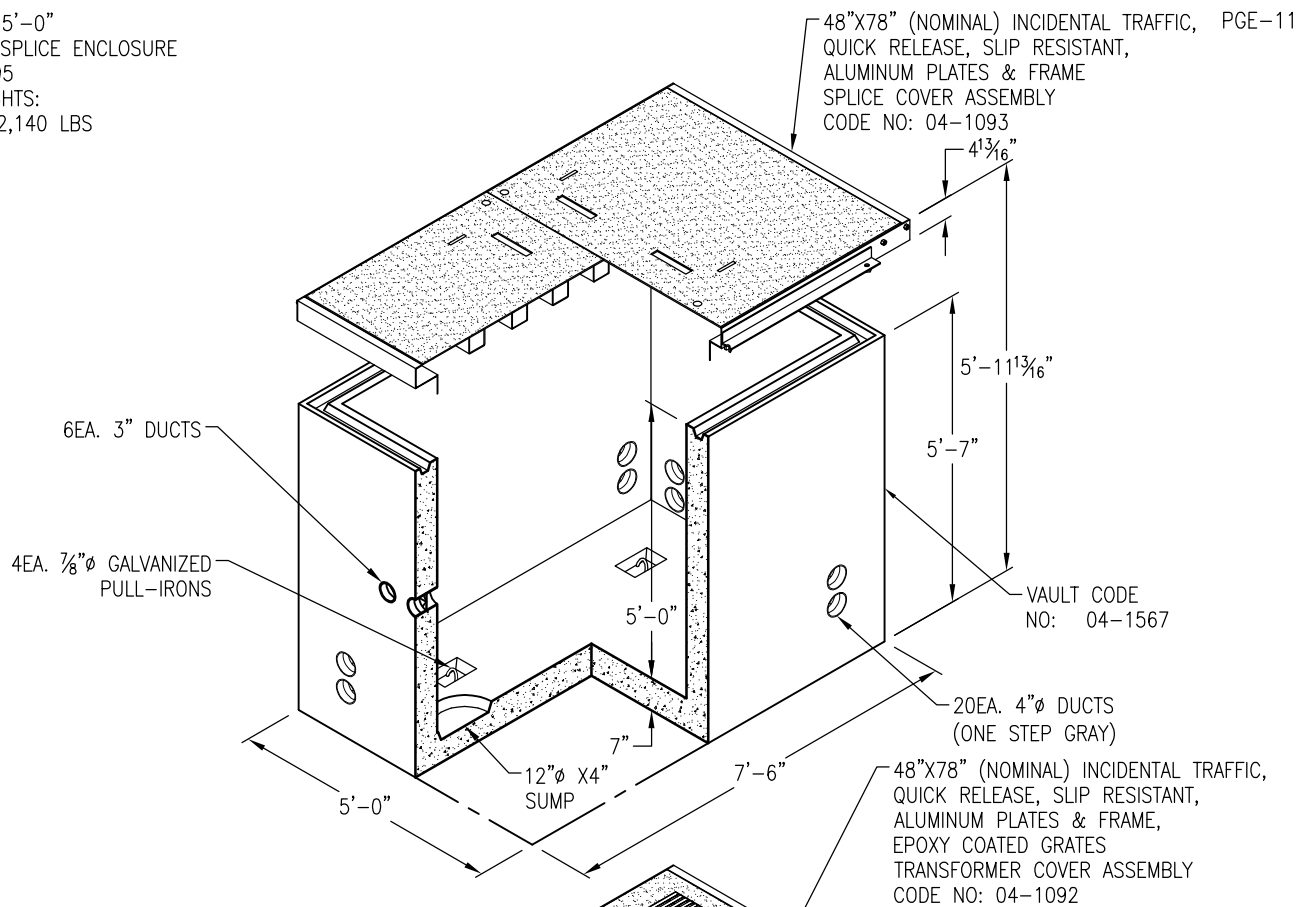


4'-0" X 6'-6" X 5'-0"  
 INCIDENTAL H-10 SPLICE ENCLOSURE  
 CODE NO: 04-1495  
 APPROXIMATE WEIGHTS:  
 WITHOUT COVER 12,140 LBS



4'-0" X 6'-6" X 5'-0"  
 INCIDENTAL H-10 TRANSFORMER ENCLOSURE  
 CODE NO: 04-1492  
 APPROXIMATE WEIGHTS:  
 WITHOUT COVER 12,140 LBS

DRAWING MAY NOT CONFORM TO THE  
 MOST CURRENT SPECIFICATION

**Oldcastle Precast**<sup>®</sup>  
 Northern California  
 Madera ■ Morgan Hill ■ Pleasanton ■ Santa Rosa ■ Stockton ■ Tulare  
 Phone: 925-750-6650 Fax: 925-750-6660

PG&E 4665I
FILE NAME: PGE-11.DWG
REVISED: MARCH 2016
<a href="http://www.oldcastleprecast.com">www.oldcastleprecast.com</a>

4'-0" X 6'-6" X 5'-0" (I.D.)  
 4665 INCIDENTAL ENCLOSURE  
 PG&E  
 Copyright © 2016 Oldcastle Precast, Inc.