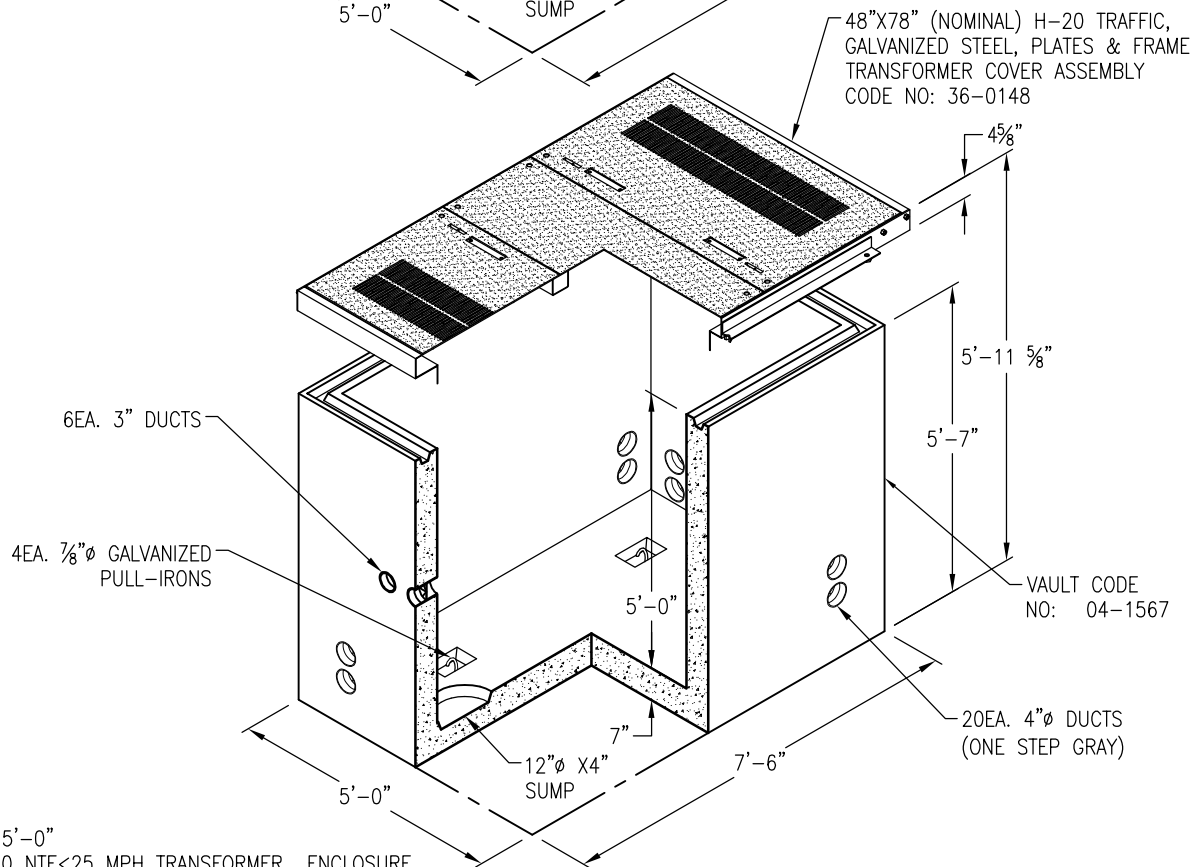
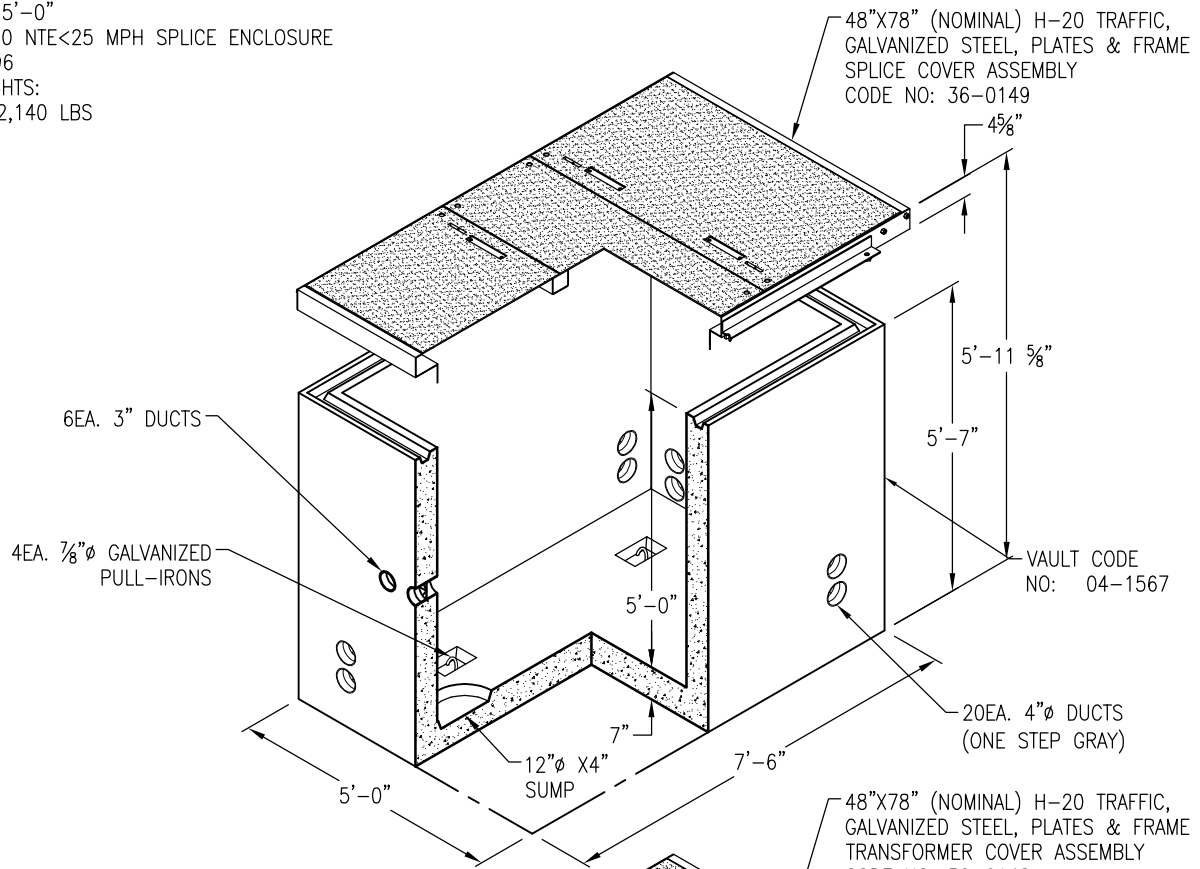


4'-0" X 6'-6" X 5'-0"
 FULL TRAFFIC H-20 NTE<25 MPH SPLICE ENCLOSURE
 CODE NO: 04-1496
 APPROXIMATE WEIGHTS:
 WITHOUT COVER 12,140 LBS

PGE-12



4'-0" X 6'-6" X 5'-0"
 FULL TRAFFIC H-20 NTE<25 MPH TRANSFORMER ENCLOSURE
 CODE NO: 04-1493
 APPROXIMATE WEIGHTS:
 WITHOUT COVER 12,140 LBS

DRAWING MAY NOT CONFORM TO THE
 MOST CURRENT SPECIFICATION



Oldcastle Precast[®]
 Northern California
 Madera ■ Morgan Hill ■ Pleasanton ■ Santa Rosa ■ Stockton ■ Tulare
 Phone: 925-750-6650 Fax: 925-750-6660

PG&E 4665FT
FILE NAME: PGE-12.DWG
REVISED: MARCH 2016
www.oldcastleprecast.com

4'-0" X 6'-6" X 5'-0" (I.D.)
 4665 TRAFFIC ENCLOSURE
 PG&E

Copyright © 2016 Oldcastle Precast, Inc.