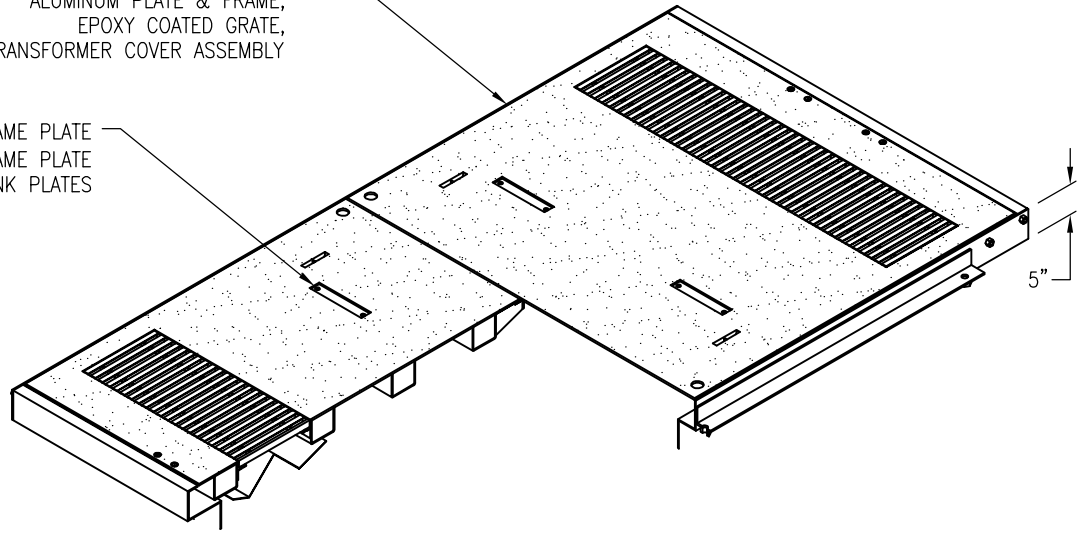


4'-6" X 8'-6" (NOMINAL)
 INCIDENTAL H-10 TRANSFORMER COVER
 CODE NO.: 03-1830

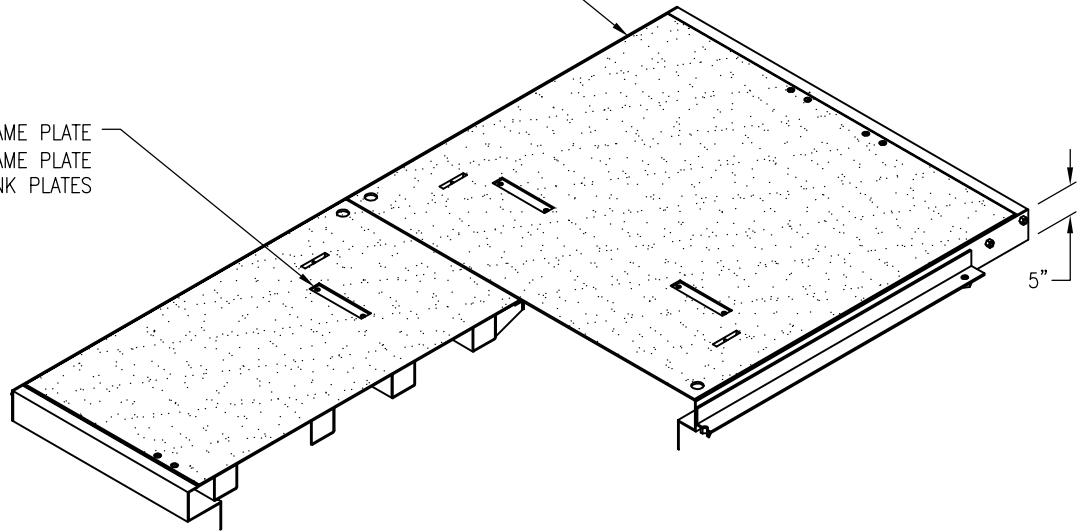
4'-6" X 8'-6" (NOMINAL) INCIDENTAL
 QUICK RELEASE, SLIP RESISTANT,
 ALUMINUM PLATE & FRAME,
 EPOXY COATED GRATE,
 TRANSFORMER COVER ASSEMBLY

1EA. "HIGH VOLTAGE" NAME PLATE
 1EA. "PG&E" NAME PLATE
 2EA. BLANK PLATES



4'-6" X 8'-6" (NOMINAL) INCIDENTAL
 QUICK RELEASE, SLIP RESISTANT,
 ALUMINUM PLATE & FRAME,
 SPLICE COVER ASSEMBLY

1EA. "HIGH VOLTAGE" NAME PLATE
 1EA. "PG&E" NAME PLATE
 2EA. BLANK PLATES



4'-6" X 8'-6" (NOMINAL)
 INCIDENTAL H-10 SPLICE COVER
 CODE NO.: 04-0642

DRAWING MAY NOT CONFORM TO THE
 MOST CURRENT SPECIFICATION



Oldcastle Precast[®]
 Northern California
 Madera ■ Morgan Hill ■ Pleasanton ■ Santa Rosa ■ Stockton ■ Tulare
 Phone: 925-750-6650 Fax: 925-750-6660

INC.. TRAFFIC COVERS

FILE NAME: PGE-35.DWG

REVISED: MARCH 2016

www.oldcastleprecast.com

4'-6" X 8'-6" X 0'-5"
INC. TRAFFIC COVERS
PG&E