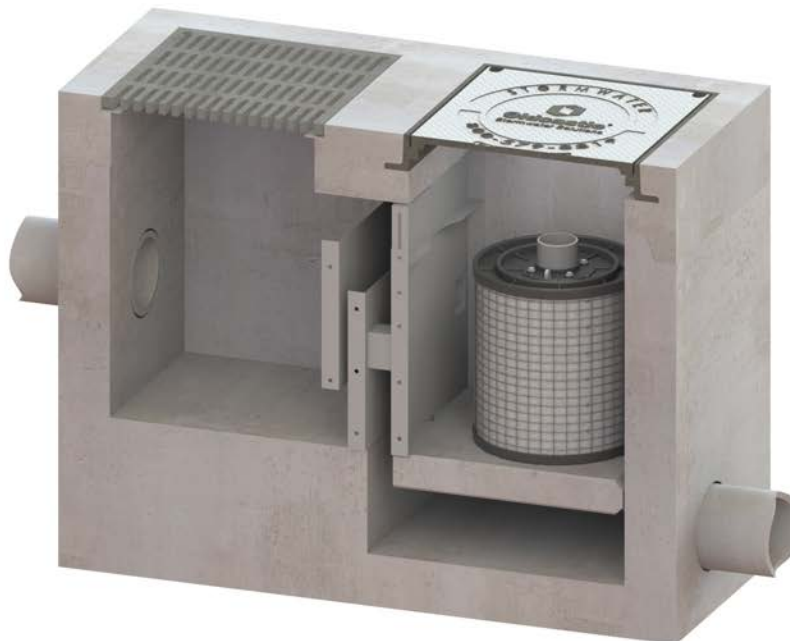
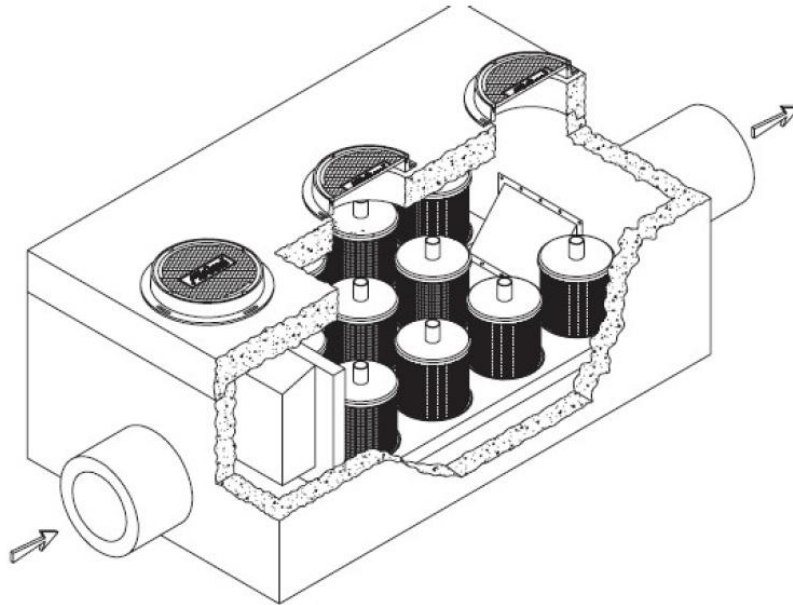


PERKFILTER®

Assembly Instructions



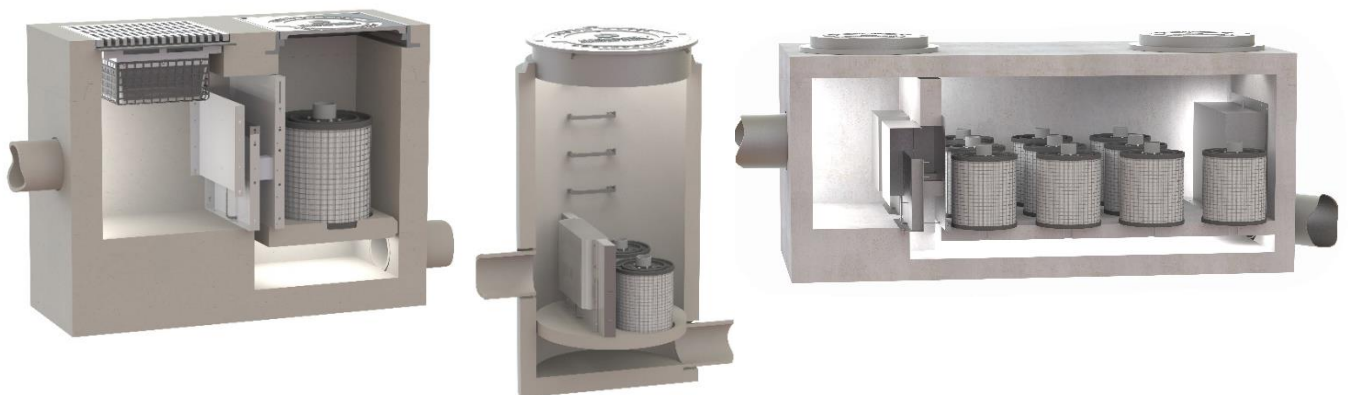
**ASSEMBLY INSTRUCTIONS: PERKFILTER MEDIA FILTRATION SYSTEM –
INTERNAL ASSEMBLY FOR CONCRETE BASINS and VAULTS**



PerkFilter Media Filtration Systems come in three layouts: Basins, Manholes and Vault. Each in a variety of sizes. All designed for the application which they will be in service. Though there are many different layouts for PerkFilter Media Filtration systems, they all revolve around 3 main components; the Inlet and Inlet Weir, PerkFilter Cartridges and a False Floor, and the Outlet, which may include an Outlet Hood.

Basin vs Manhole vs Vault

Basins consist of an inlet gallery, and up to 4 cartridges aligned in a single row. Manholes are designed for small footprint applications and consist of an Inlet Weir/Bypass assembly, 1-several filter cartridges and a false floor. Vaults consist of an inlet gallery, and a cartridge gallery ranging from a few to hundreds of cartridge filters, which feed through a false floor into an outlet chamber.



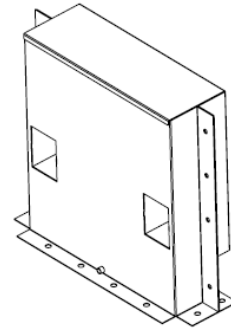
Identifying the components of your Kit

PerkFilter Lift Handle

Including: Mounting Plate, and Anchor Bolts

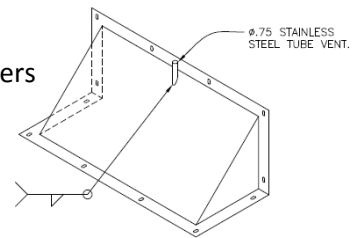
Inlet Weir (CF-CCB... OR CF-IBA...) and PerkFilter Weir Extension (If applicable)

Including: Anchor Bolts, Flat Washers



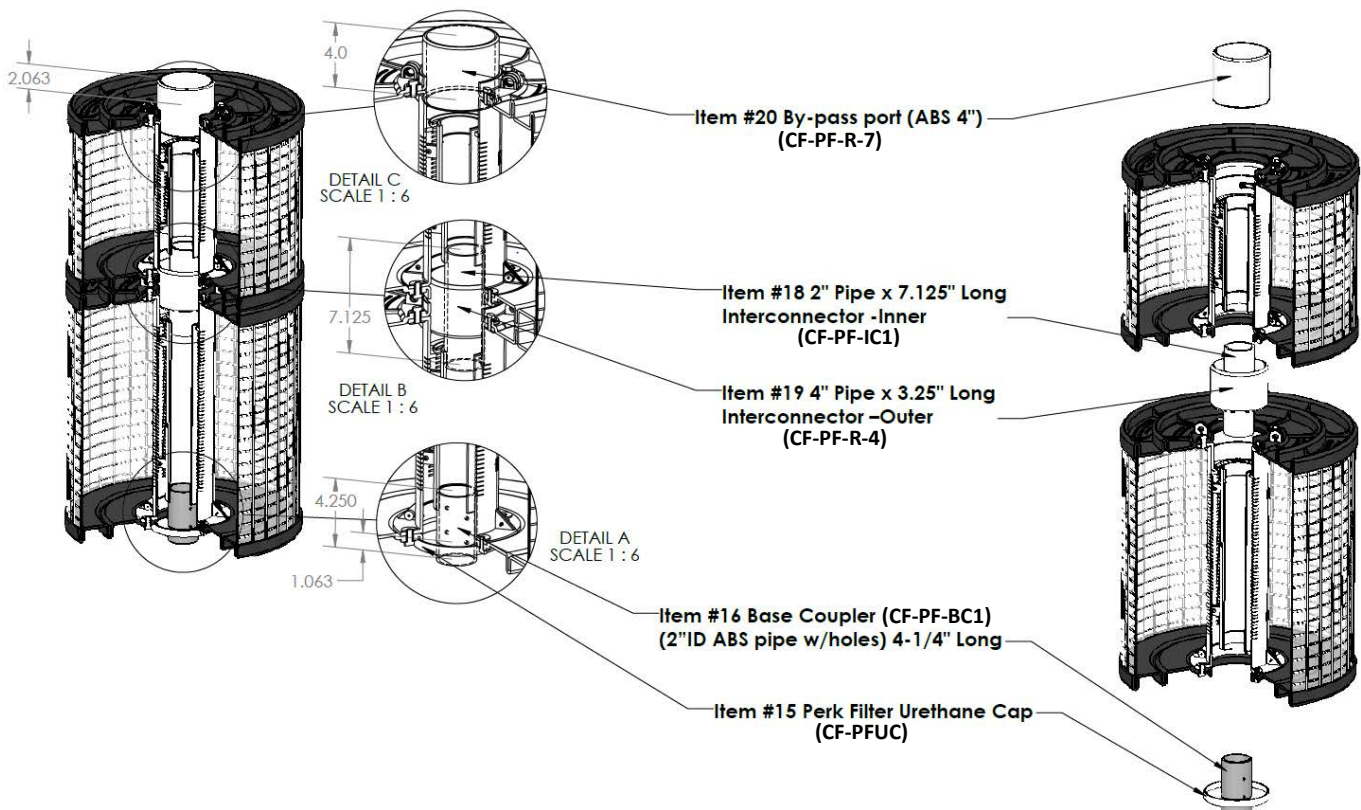
Outlet Hood

Including: Plastic Vent Hose, Pipe Clamps, Anchor Bolts, Flat Washers



PerkFilters (see below)

Including: Floor Coupler, Urethane Cap (Item #15), Base Coupler (Item #16), Bypass Port (Item #20), and Milled 4" X ~4" PerkFilter Interconnector (Item #19) and 2" X 7" Interconnector (Item #18).



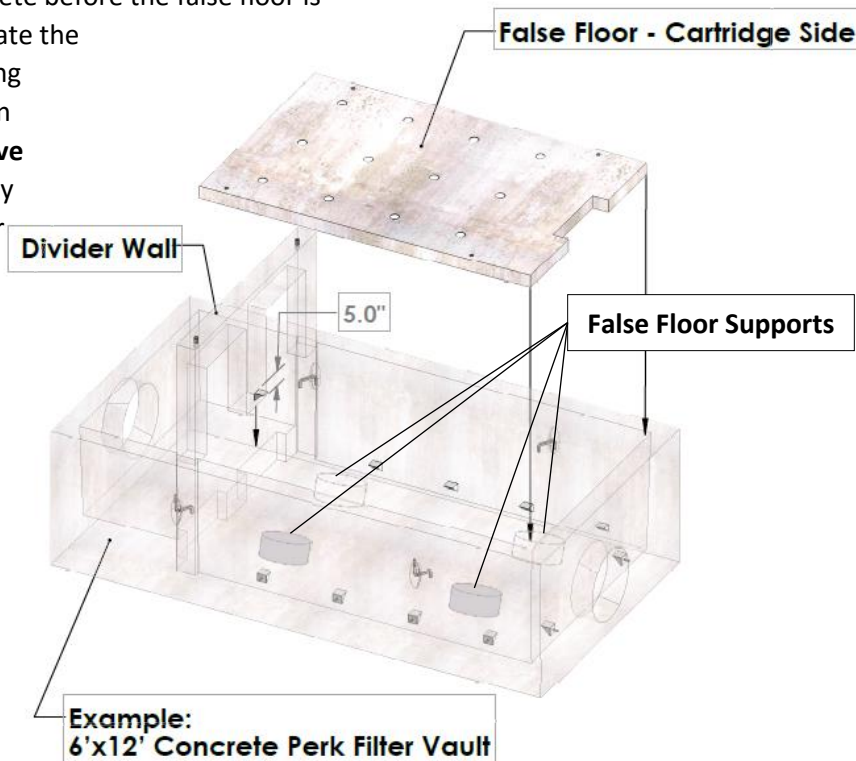
1: Installing the False Floor

When you receive your kit, first identify CF-PF-FC, this is a white PVC coupler with a section of PVC pipe inserted in one end. This is the PerkFilter Floor Coupler. This part is to be cast into the False Floor coupler side up. Arrange the CF-PF-FC parts according to the PDD-False Floor Detail for the project. After False Floor is Set, clean up areas around the base coupler so they are free of excess cement and material.

Most PerkFilter Basins and Vaults will utilize False Floor Supports consisting of 4" or 10" round PVC spacer pedestal filled with concrete before the false floor is installed. Identify these support molds, locate the placement in the PDD, drill hole in floor using hammer drill and insert a rebar stud, pour in place. **Rebar stud should not protrude above False Floor Support.** Some designs, primarily catch basins, utilize angle iron as False Floor support, identify these pieces and their corresponding anchor bolts.

Lower false floor into place.

Once false floor is in place, erect the Divider/Weir Wall. PerkFilter Vaults may have a concrete weir wall, cast separately and lowered into the vault. At this time, secure the weir wall in place. Narrow PerkFilter Catch Basins may utilize the Inlet Weir for the entirety of the basin Weir Wall. If this is the case proceed to the next step.

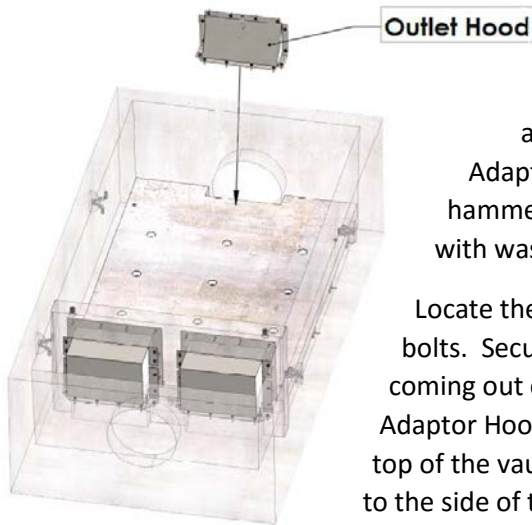


2: Installing the Inlet and Outlet Assemblies

Locate the Inlet Weir / Bypass Assembly (IBA) or assemblies, this is usually the largest stainless-steel component in your kit and can be identified by its two flow-through ports. A weir extension may also be included with your kit, install the weir extension onto the bypass weir wall in the middle of the Inlet Weir / Bypass. Bolt the extension in place using the provided bolts and nuts or Red Head into basin wall as directed below.

Align the IBA with the Weir Wall at the edge of your false floor so the Overflow Bypass of the Inlet has a clear path below the False Floor and flow-through ports are on the PerkFilter gallery side. Mark bolt holes, remove the IBA and drill holes for 3/8" Red Head Anchor Bolts using a hammer drill set in hammer and rotation mode. Clean holes, place IBA back into position and hammer Red Head Anchor Bolts into place through the IBA holes. Secure in place with washers/nuts. Proper torque value of 25 Ft/lbs, to be applied.

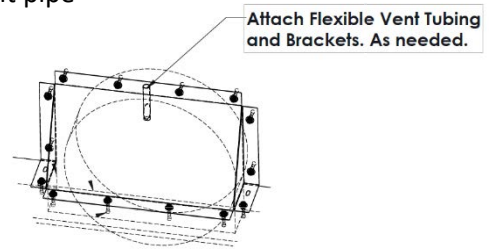
IF YOU HAMMER ANCHOR BOLTS INTO CONCRETE WITHOUT IBA IN PLACE, YOU MAY NOT BE ABLE TO INSTALL THE IBA!



3. Installing the Outlet Hood and Vent Tube

Now move to the Outlet Adaptor Hood. Align the Outlet Adaptor Hood over the outlet window of your false floor and the outlet of the basin/vault. Mark holes, remove Outlet Adaptor Hood, drill and clean holes. Replace Outlet Adaptor and hammer Red Head Anchor Bolts into the concrete. Secure in place with washers/nuts. Proper torque value of 25 Ft/lbs. to be applied.

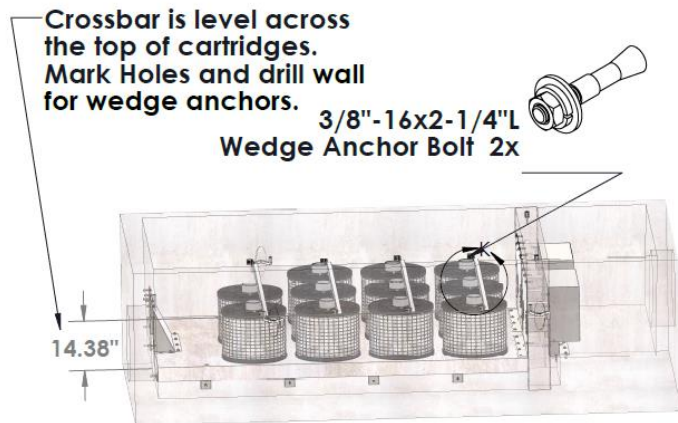
Locate the $\frac{3}{4}$ " Clear Plastic Hose, Pipe Clamps and corresponding anchor bolts. Secure the hose to the short vent pipe coming out of the top of the Outlet Adaptor Hood and route up toward the top of the vault. Secure the Plastic Hose to the side of the vault wall using the supplied pipe clamps and anchor bolts.



3. Installing Cartridge Hold Down Brackets and Lift Handle

Install SK-0898, Strut Channel Hold Down Brackets, according to the layout of the PerkFilter Cartridges. These brackets are installed to allow for the Unistrut Hold Down Bars to set on top of the PerkFilter Cartridge or Cartridge Stack. Insert a PerkFilter Cartridge or Cartridge Stack into place and mark the elevation to ensure correct fit. These brackets are to be installed vertically **with latch bolt up** on the wall in pairs opposite each other.

Install the wall mount bracket/label for the Cartridge Handle. This should be located on the wall near the access port for the Filter Vault, in a location easily noticed by future service technicians. Use the supplied anchor bolts to mount the brackets in the same process as the hose clamps.

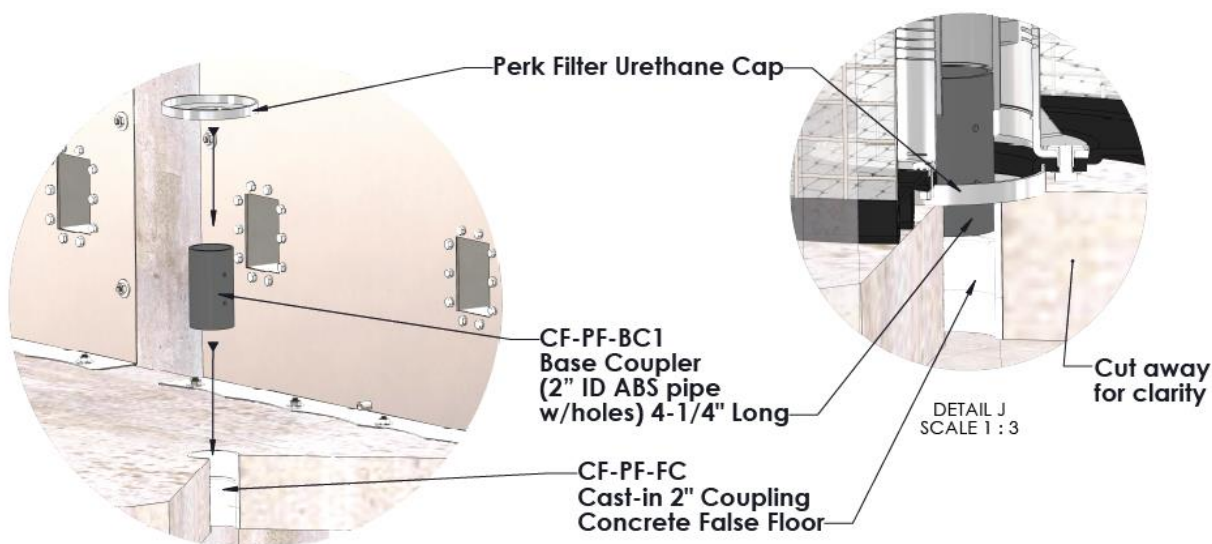


4. Seal Areas with SIKAFLEX

Once all stainless-steel components are installed, seal around all areas where water should not be allowed to pass. This includes around the bolted areas of Inlet Weir/Bypass Assembly (On the inlet side and vault side), Outlet Adapter Hood, edges of the false floor, and weir wall. It is important to seal any areas which water is not intended to pass. Large gaps in the weir wall and false floor can be filled with provided Quick Cure Foam Touch N Seal and sealed with Self Leveling SikaFlex.

5. PerkFilter Cartridge Installation:

Locate CF-PF-BC1 (black pipe with 2 holes drilled in side) Base Coupler and CF-PFUF, PerkFilter Urethane Cap. Insert CF-PF-BC1 into all False Floor Couplers (CF-PF-FC) which will receive a PerkFilter and slide the CF-PFUF over the CF-PF-BC1 with edge of the cap up. Some False Floor Couplers will not have a PerkFilter Cartridge; for these a Capped Plug will be provided. Install these in unused Floor Couplers.



6. PerkFilter Packing

Small basins and manholes can be transported with the PerkFilter Cartridges installed. For these systems install the PerkFilter Cartridges, insert the Bypass Ports into the top of the Cartridge and hold down bars and prepare for shipment. When making the determination to install the Cartridges in the plant, ask: Will it be overweight? Will lift points be accessible with filters installed?

Larger systems will require PerkFilters Cartridges to be packaged for transportation and jobsite installation. If the installation is for stacked cartridges, 2"DN X 7" length and milled 4"DN X 4" length PerkFilter interconnectors will also be included. Palletize Filter Cartridges, Bypass Ports, and both Interconnectors (if applicable) and wrap for transportation to the jobsite.

PERKFILTER®

OUR MARKETS



BUILDING
STRUCTURES



COMMUNICATIONS



WATER



ENERGY



TRANSPORTATION