



Oldcastle[®]
Enclosure Solutions

PLASTIBETON[®]
CHANNEL SYSTEM



Oldcastle®
Enclosure Solutions

PLASTIBETON®
CHANNEL SYSTEM



WON'T CRACK UNDER PRESSURE!

2 d'Inverness Avenue, Candiac
Quebec, Canada J5R 4W5
T 888.868.5214 • F 888.500.5568

Copyright © 2012





Copyright © 2012



2 d'Inverness Avenue, Candiac
Quebec, Canada J5R 4W5
T 888.868.5214 • F 888.500.5568

A SYSTEM YOU CAN RELY ON!



Oldcastle®
Enclosure Solutions

PLASTIBETON®
CHANNEL SYSTEM



WON'T CRACK UNDER PRESSURE!

2 d'Inverness Avenue, Candiac
Quebec, Canada J5R 4W5
T 888.868.5214 • F 888.500.5568

Copyright © 2012





Copyright © 2012



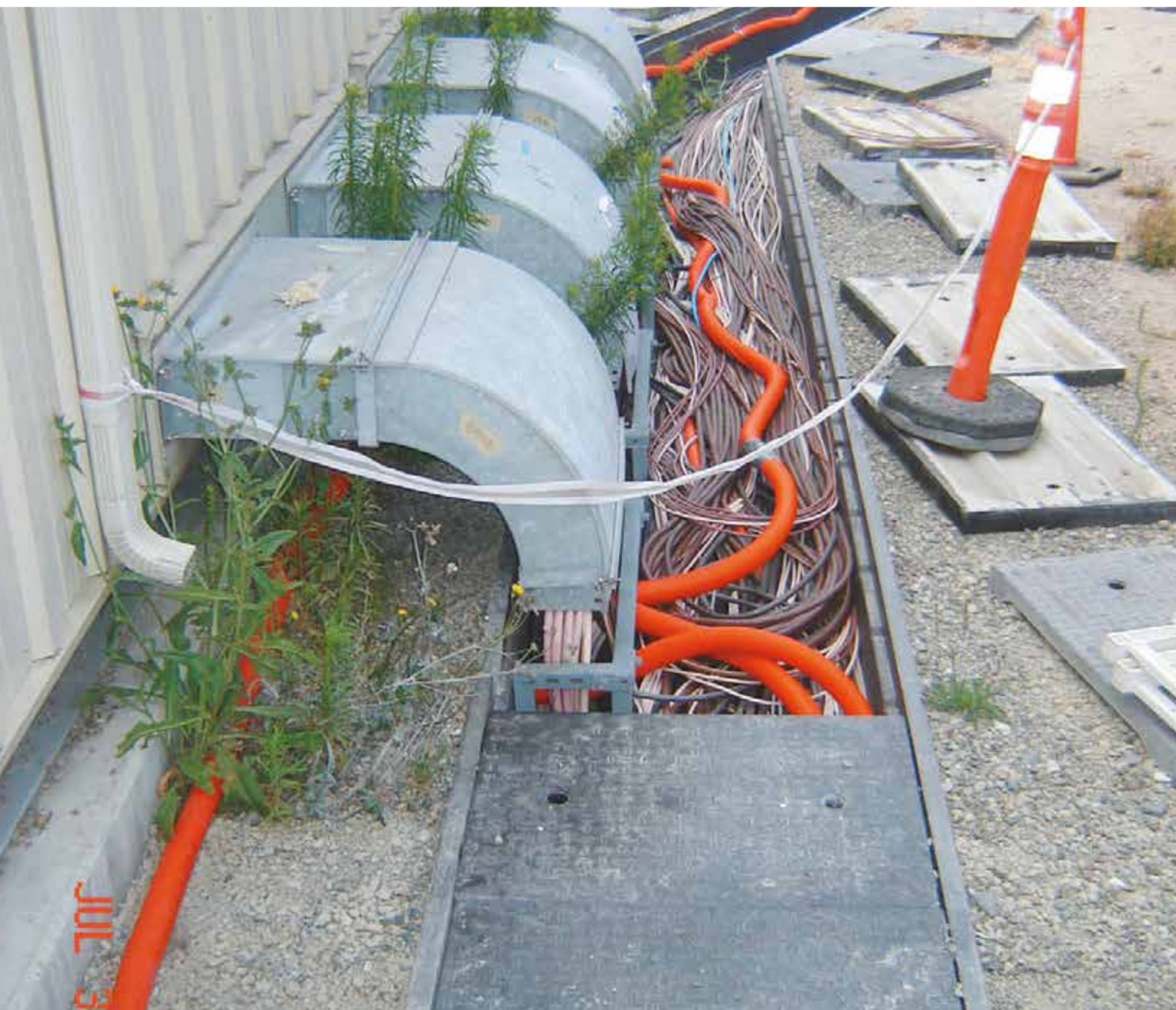
2 d'Inverness Avenue, Candiac
Quebec, Canada J5R 4W5
T 888.868.5214 • F 888.500.5568

A SYSTEM YOU CAN RELY ON!



Oldcastle®
Enclosure Solutions

PLASTIBETON®
CHANNEL SYSTEM



WON'T CRACK UNDER PRESSURE!

2 d'Inverness Avenue, Candiac
Quebec, Canada J5R 4W5
T 888.868.5214 • F 888.500.5568

Copyright © 2012





Copyright © 2012



2 d'Inverness Avenue, Candiac
Quebec, Canada J5R 4W5
T 888.868.5214 • F 888.500.5568

A SYSTEM YOU CAN RELY ON!



WON'T CRACK UNDER PRESSURE!

2 d'Inverness Avenue, Candiach
Quebec, Canada J5R 4W5
T 888.868.5214 • F 888.500.5568

Copyright © 2012





Copyright © 2012



2 d'Inverness Avenue, Candiac
Quebec, Canada J5R 4W5
T 888.868.5214 • F 888.500.5568

A SYSTEM YOU CAN RELY ON!



Oldcastle®
Enclosure Solutions

PLASTIBETON®
CHANNEL SYSTEM



WON'T CRACK UNDER PRESSURE!

2 d'Inverness Avenue, Candiac
Quebec, Canada J5R 4W5
T 888.868.5214 • F 888.500.5568

Copyright © 2012





Copyright © 2012



2 d'Inverness Avenue, Candiac
Quebec, Canada J5R 4W5
T 888.868.5214 • F 888.500.5568

A SYSTEM YOU CAN RELY ON!



Oldcastle®
Enclosure Solutions

PLASTIBETON®
CHANNEL SYSTEM



WON'T CRACK UNDER PRESSURE!

2 d'Inverness Avenue, Candiac
Quebec, Canada J5R 4W5
T 888.868.5214 • F 888.500.5568

Copyright © 2012





Copyright © 2012



2 d'Inverness Avenue, Candiac
Quebec, Canada J5R 4W5
T 888.868.5214 • F 888.500.5568

A SYSTEM YOU CAN RELY ON!



Oldcastle®
Enclosure Solutions

PLASTIBETON®
CHANNEL SYSTEM



WON'T CRACK UNDER PRESSURE!

2 d'Inverness Avenue, Candiac
Quebec, Canada J5R 4W5
T 888.868.5214 • F 888.500.5568

Copyright © 2012





Copyright © 2012



2 d'Inverness Avenue, Candiac
Quebec, Canada J5R 4W5
T 888.868.5214 • F 888.500.5568

A SYSTEM YOU CAN RELY ON!



Oldcastle®
Enclosure Solutions

PLASTIBETON®
CHANNEL SYSTEM



WON'T CRACK UNDER PRESSURE!

2 d'Inverness Avenue, Candiac
Quebec, Canada J5R 4W5
T 888.868.5214 • F 888.500.5568

Copyright © 2012





Copyright © 2012



2 d'Inverness Avenue, Candiac
Quebec, Canada J5R 4W5
T 888.868.5214 • F 888.500.5568

A SYSTEM YOU CAN RELY ON!



Oldcastle®
Enclosure Solutions

PLASTIBETON®
CHANNEL SYSTEM



WON'T CRACK UNDER PRESSURE!

2 d'Inverness Avenue, Candiac
Quebec, Canada J5R 4W5
T 888.868.5214 • F 888.500.5568

Copyright © 2012





Copyright © 2012



2 d'Inverness Avenue, Candiac
Quebec, Canada J5R 4W5
T 888.868.5214 • F 888.500.5568

A SYSTEM YOU CAN RELY ON!



Oldcastle®
Enclosure Solutions

PLASTIBETON®
CHANNEL SYSTEM



WON'T CRACK UNDER PRESSURE!

2 d'Inverness Avenue, Candiac
Quebec, Canada J5R 4W5
T 888.868.5214 • F 888.500.5568

Copyright © 2012



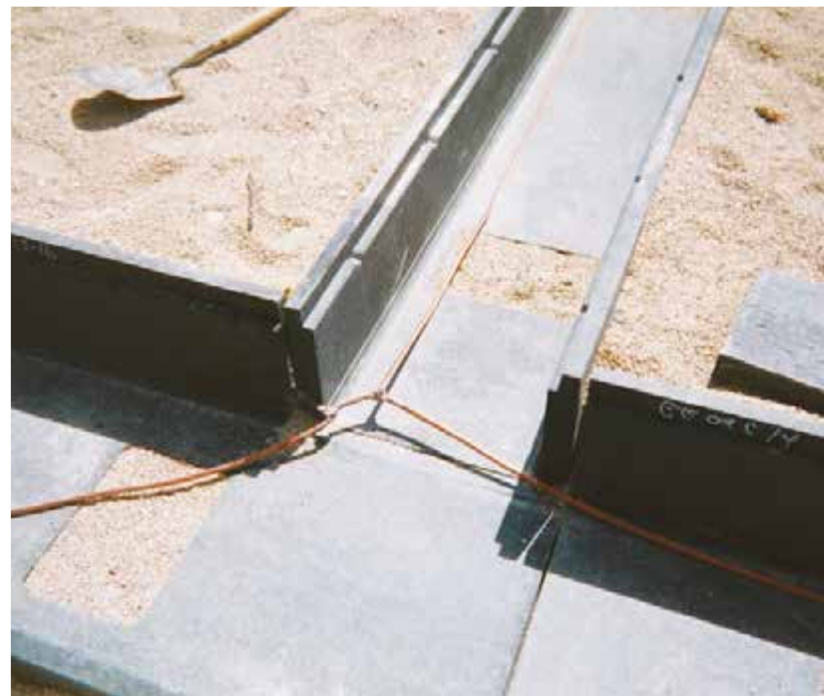
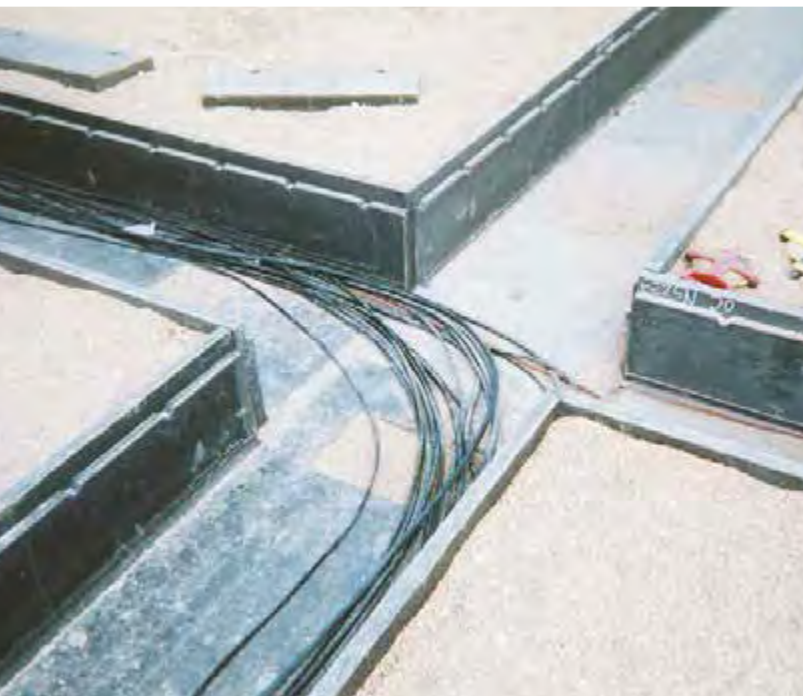


Copyright © 2012



2 d'Inverness Avenue, Candiac
Quebec, Canada J5R 4W5
T 888.868.5214 • F 888.500.5568

A SYSTEM YOU CAN RELY ON!



WON'T CRACK UNDER PRESSURE!

2 d'Inverness Avenue, Candiac
Quebec, Canada J5R 4W5
T 888.868.5214 • F 888.500.5568

Copyright © 2012





Copyright © 2012



2 d'Inverness Avenue, Candiac
Quebec, Canada J5R 4W5
T 888.868.5214 • F 888.500.5568

A SYSTEM YOU CAN RELY ON!



Oldcastle®
Enclosure Solutions

PLASTIBETON®
CHANNEL SYSTEM



WON'T CRACK UNDER PRESSURE!

2 d'Inverness Avenue, Candiac
Quebec, Canada J5R 4W5
T 888.868.5214 • F 888.500.5568

Copyright © 2012





Copyright © 2012



2 d'Inverness Avenue, Cadiac
Quebec, Canada J5R 4W5
T 888.868.5214 • F 888.500.5568

A SYSTEM YOU CAN RELY ON!



Oldcastle®
Enclosure Solutions

PLASTIBETON®
CHANNEL SYSTEM



WON'T CRACK UNDER PRESSURE!

2 d'Inverness Avenue, Candiac
Quebec, Canada J5R 4W5
T 888.868.5214 • F 888.500.5568

Copyright © 2012





Copyright © 2012



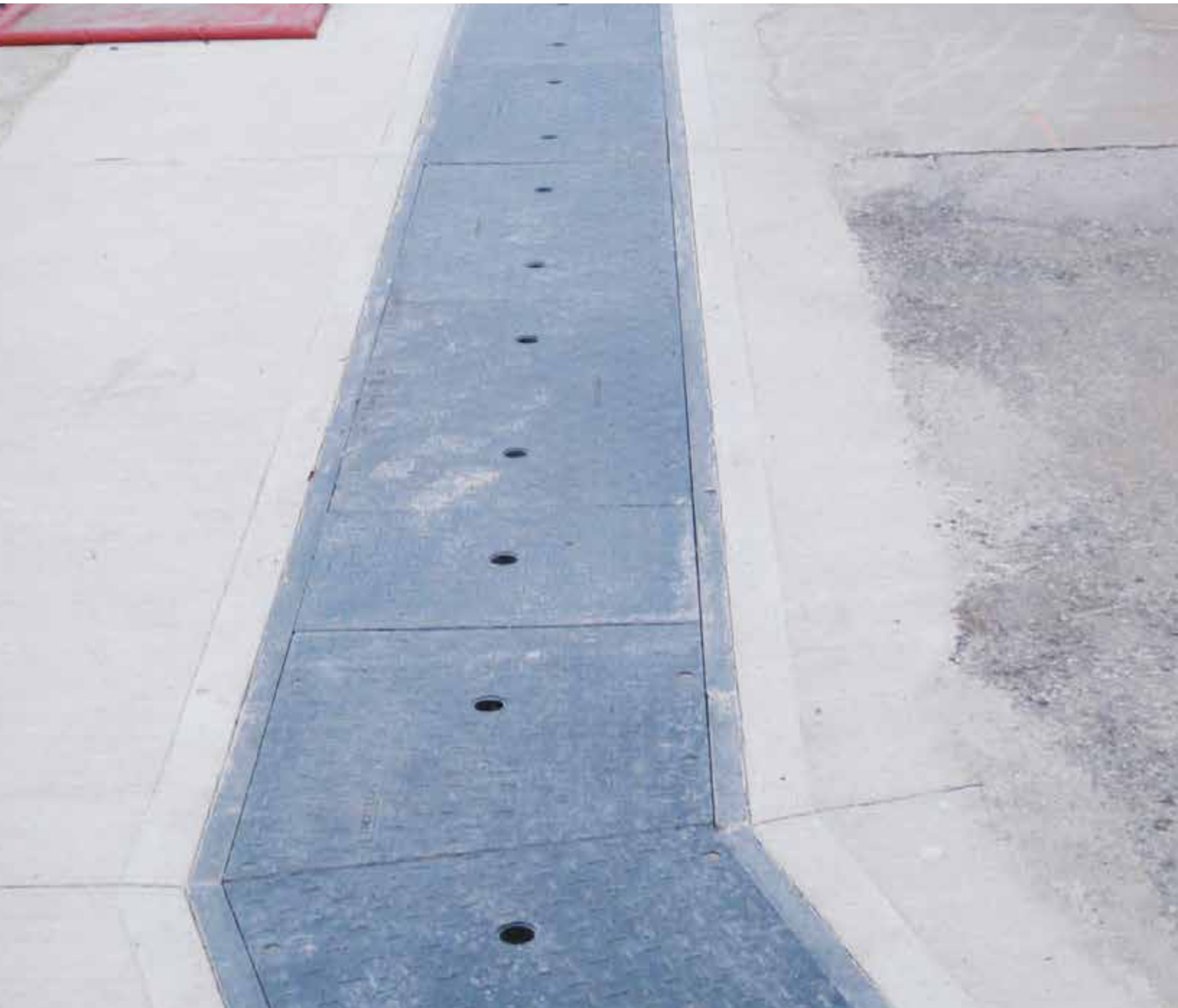
2 d'Inverness Avenue, Candiac
Quebec, Canada J5R 4W5
T 888.868.5214 • F 888.500.5568

A SYSTEM YOU CAN RELY ON!



Oldcastle®
Enclosure Solutions

PLASTIBETON®
CHANNEL SYSTEM



WON'T CRACK UNDER PRESSURE!

2 d'Inverness Avenue, Candiac
Quebec, Canada J5R 4W5
T 888.868.5214 • F 888.500.5568

Copyright © 2012





Copyright © 2012



2 d'Inverness Avenue, Candiac
Quebec, Canada J5R 4W5
T 888.868.5214 • F 888.500.5568

A SYSTEM YOU CAN RELY ON!



Oldcastle®
Enclosure Solutions

PLASTIBETON®
CHANNEL SYSTEM



WON'T CRACK UNDER PRESSURE!

2 d'Inverness Avenue, Candiac
Quebec, Canada J5R 4W5
T 888.868.5214 • F 888.500.5568

Copyright © 2012





Copyright © 2012



2 d'Inverness Avenue, Candiac
Quebec, Canada J5R 4W5
T 888.868.5214 • F 888.500.5568

A SYSTEM YOU CAN RELY ON!



Oldcastle®
Enclosure Solutions

PLASTIBETON®
CHANNEL SYSTEM



WON'T CRACK UNDER PRESSURE!

2 d'Inverness Avenue, Candiac
Quebec, Canada J5R 4W5
T 888.868.5214 • F 888.500.5568

Copyright © 2012





Copyright © 2012



2 d'Inverness Avenue, Candiach
Quebec, Canada J5R 4W5
T 888.868.5214 • F 888.500.5568

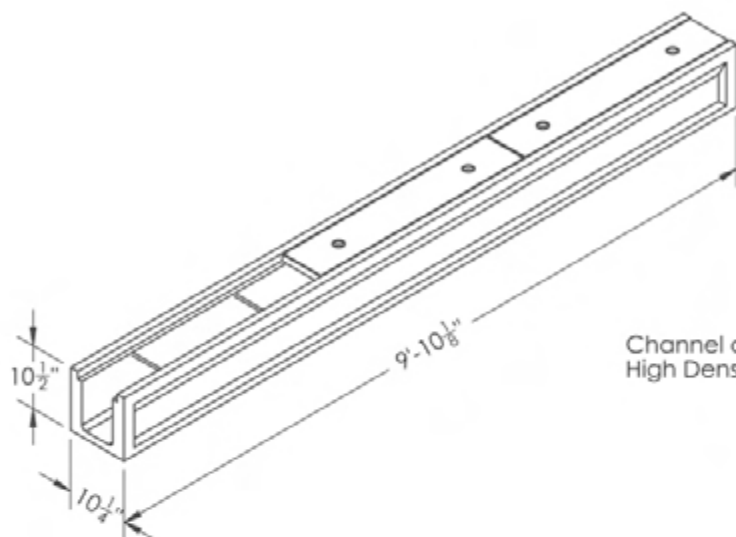
A SYSTEM YOU CAN RELY ON!



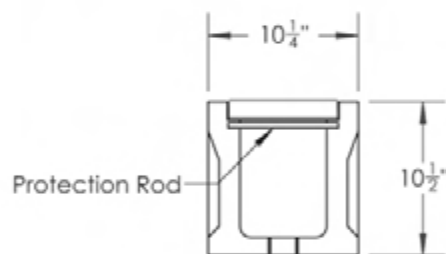
Oldcastle®
Enclosure Solutions

PLASTIBETON®
CHANNEL SYSTEM

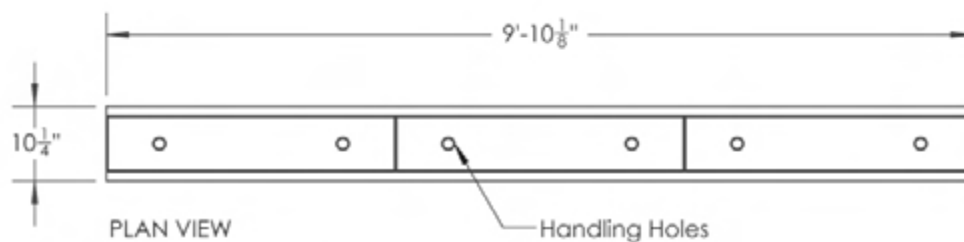
Model No. 68
Weight 402 lb



Channel and covers are made of
High Density Polymer Concrete



END VIEW



PLAN VIEW

Handling Holes

WON'T CRACK UNDER PRESSURE!

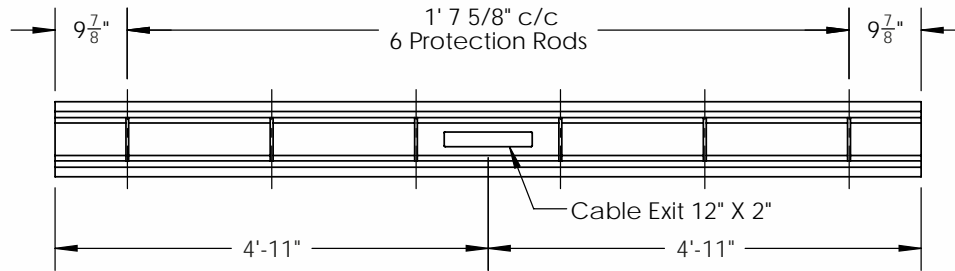
2 d'Inverness Avenue, Candiac
Quebec, Canada J5R 4W5

T 888.868.5214 • F 888.500.5568

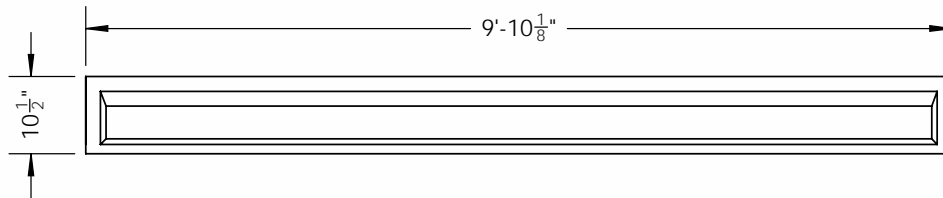
Copyright © 2012

ITEMS ARE SUBJECT TO CHANGE WITHOUT NOTICE.

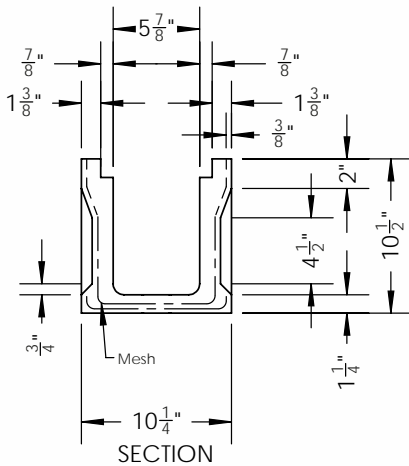
Model No. 68
Weight 402 lb



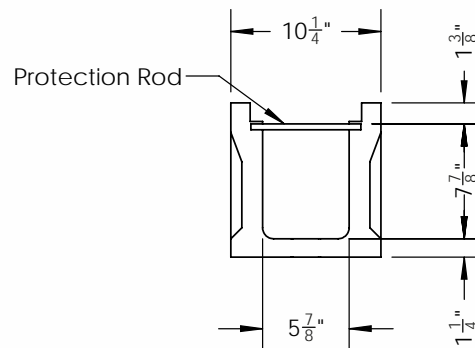
PLAN VIEW



ELEVATION



SECTION



END VIEW

ITEMS ARE SUBJECT TO CHANGE WITHOUT NOTICE.

Copyright © 2012



2 d'Inverness Avenue, Candiac
Quebec, Canada J5R 4W5
T 888.868.5214 • F 888.500.5568

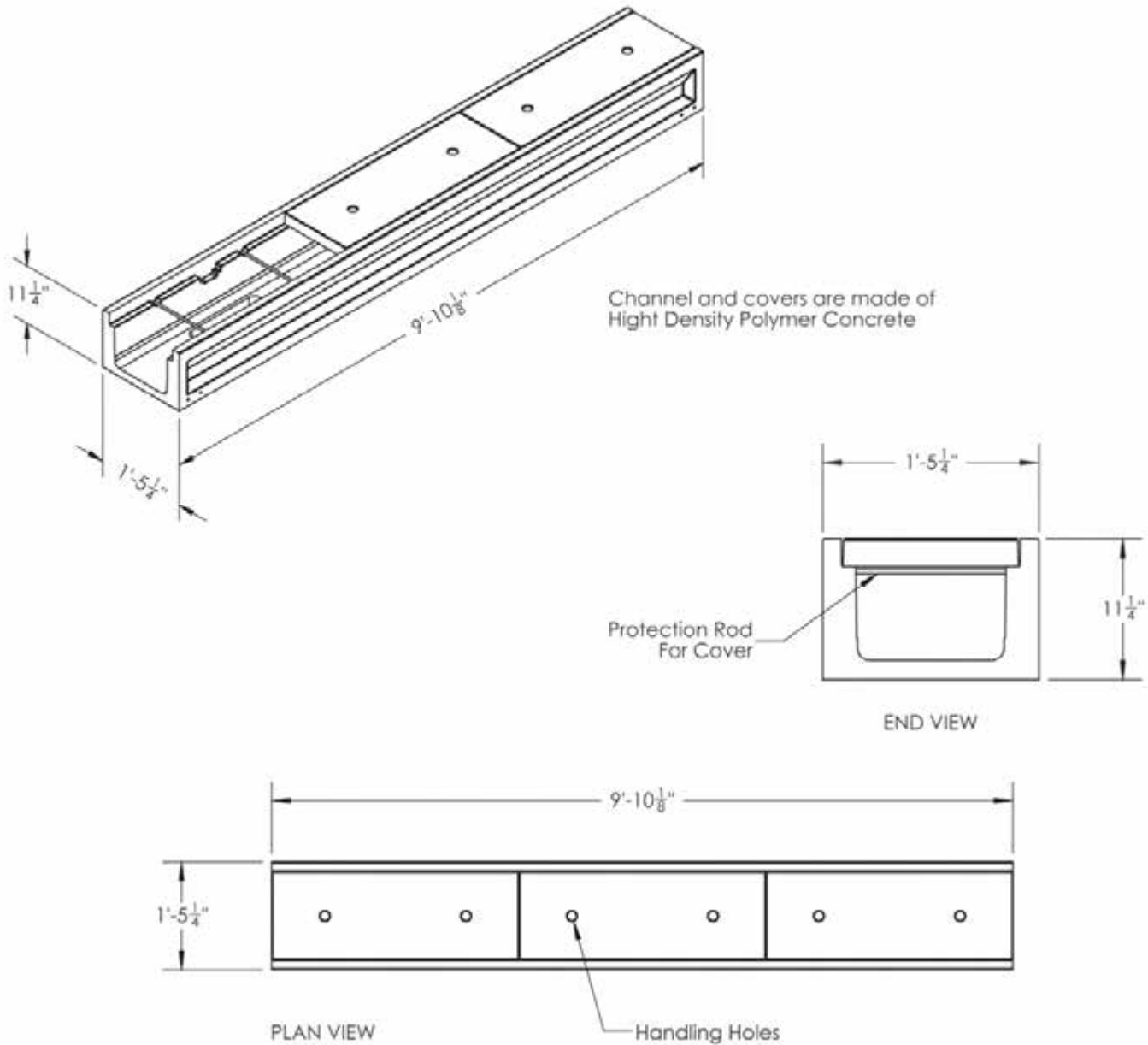
A SYSTEM YOU CAN RELY ON!



Oldcastle®
Enclosure Solutions

PLASTIBETON®
CHANNEL SYSTEM

Model No. 128
Weight 588 lb



ITEMS ARE SUBJECT TO CHANGE WITHOUT NOTICE.

WON'T CRACK UNDER PRESSURE!

2 d'Inverness Avenue, Candiac
Quebec, Canada J5R 4W5
T 888.868.5214 • F 888.500.5568

Copyright © 2012

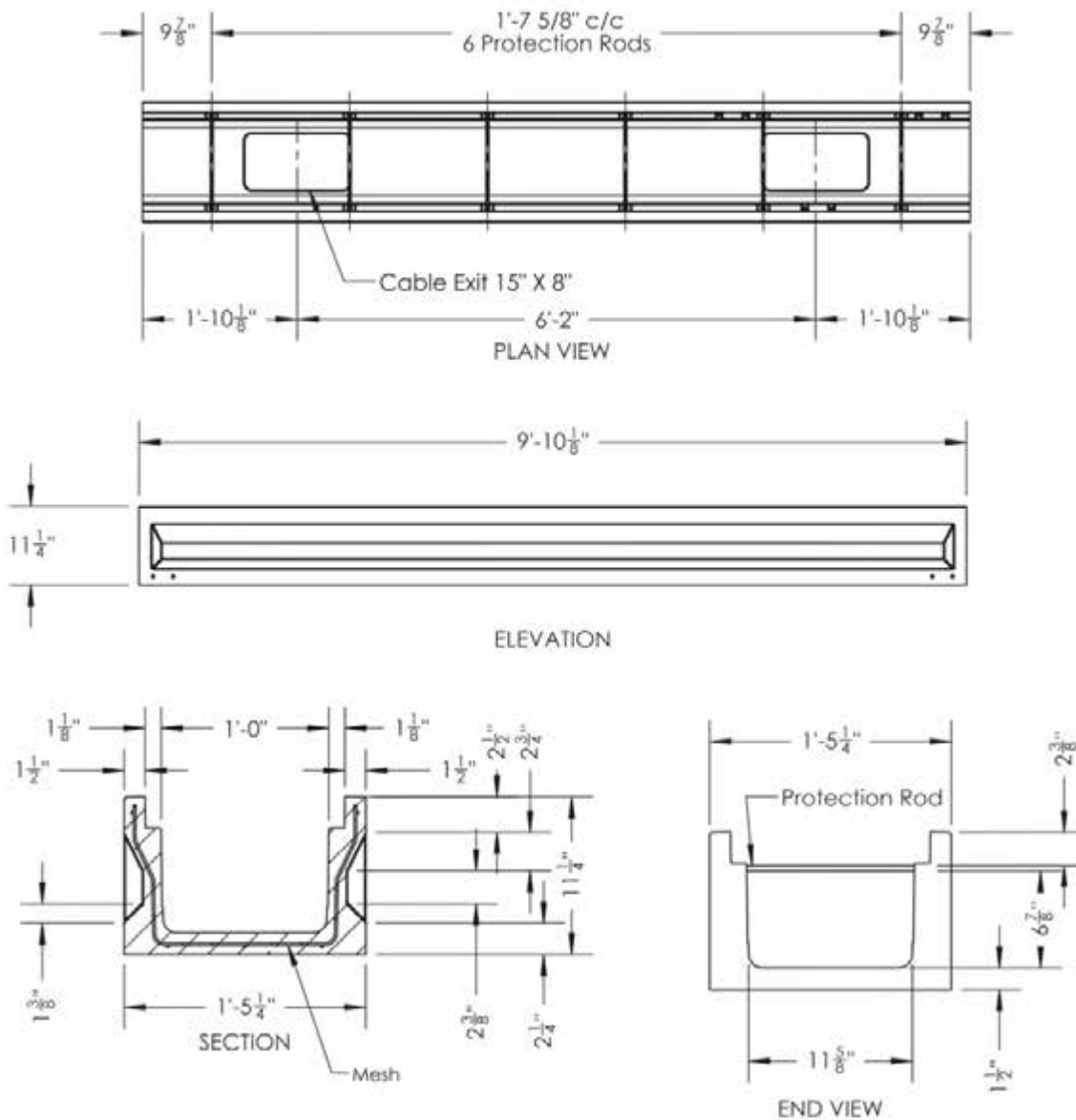


Oldcastle®
Enclosure Solutions

PLASTIBETON®
CHANNEL SYSTEM

®

Model No. 128
Weight 588 lb



ITEMS ARE SUBJECT TO CHANGE WITHOUT NOTICE.

Copyright © 2012



2 d'Inverness Avenue, Candiac
Quebec, Canada J5R 4W5
T 888.868.5214 • F 888.500.5568

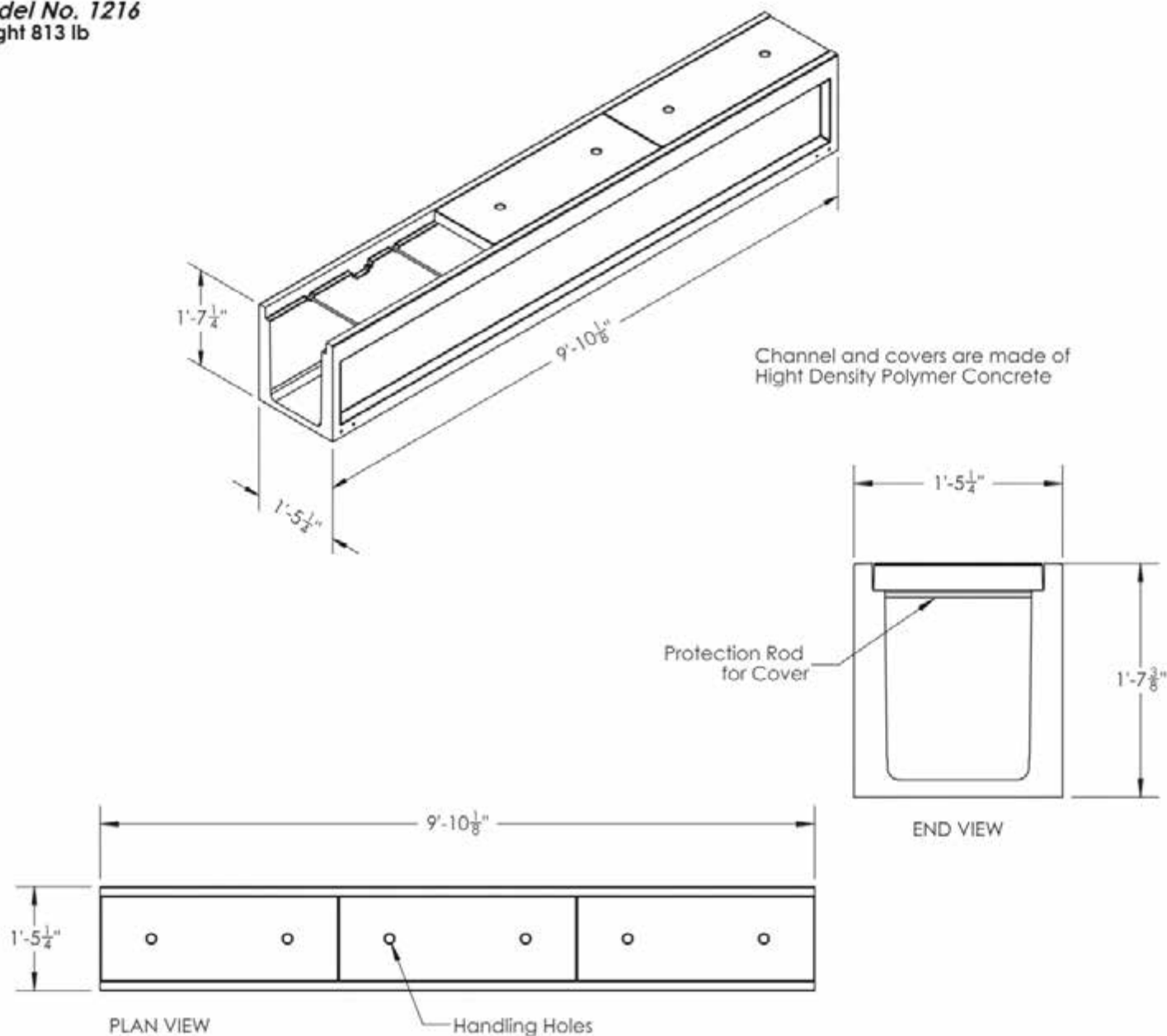
A SYSTEM YOU CAN RELY ON!



Oldcastle®
Enclosure Solutions

PLASTIBETON®
CHANNEL SYSTEM

Model No. 1216
Weight 813 lb



ITEMS ARE SUBJECT TO CHANGE WITHOUT NOTICE.

WON'T CRACK UNDER PRESSURE!

2 d'Inverness Avenue, Candiac
Quebec, Canada J5R 4W5
T 888.868.5214 • F 888.500.5568

Copyright © 2012

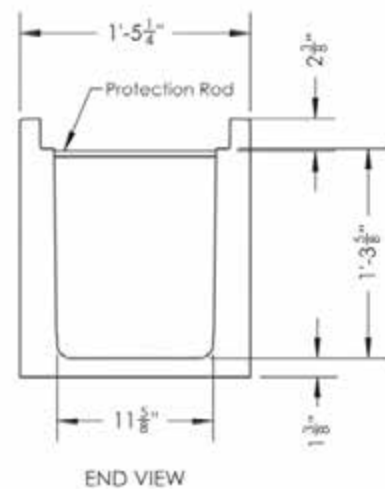
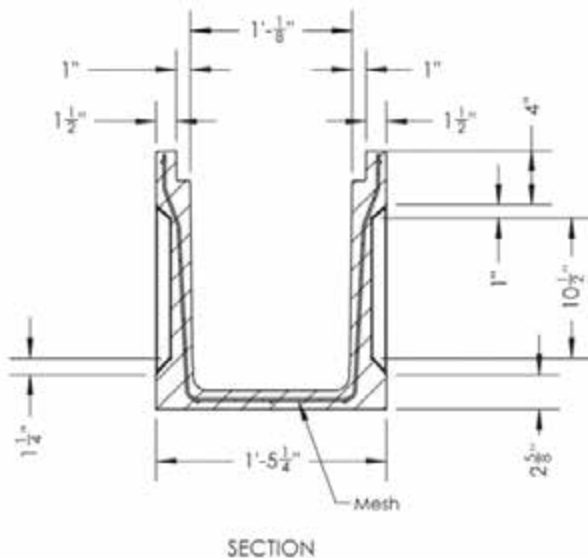
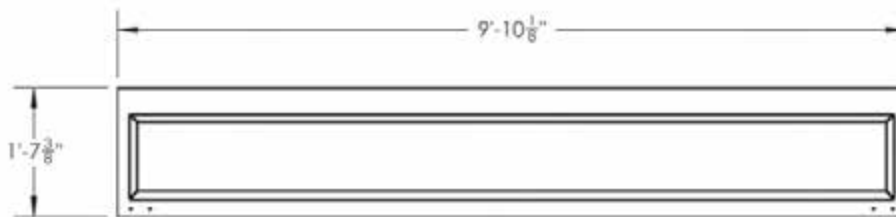
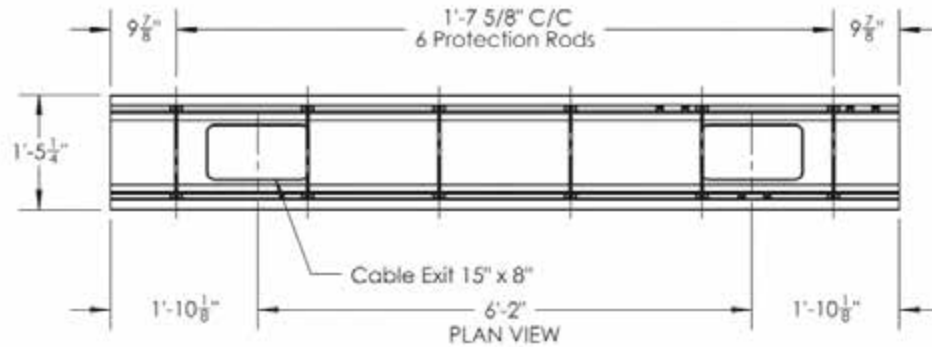


Oldcastle®
Enclosure Solutions

PLASTIBETON®
CHANNEL SYSTEM

®

Model No. 1216
Weight 813 lb



ITEMS ARE SUBJECT TO CHANGE WITHOUT NOTICE.

Copyright © 2012



2 d'Inverness Avenue, Candiac
Quebec, Canada J5R 4W5
T 888.868.5214 • F 888.500.5568

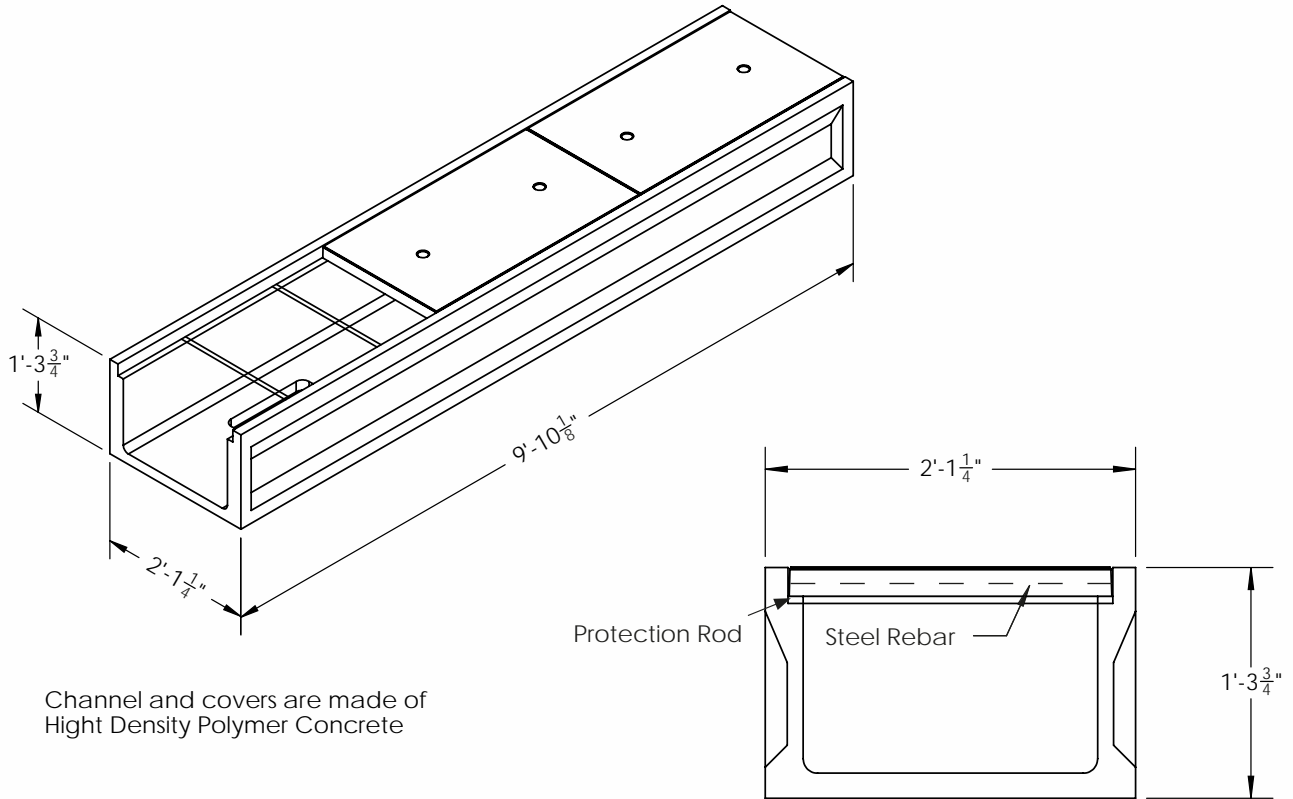
A SYSTEM YOU CAN RELY ON!



Oldcastle®
Enclosure Solutions

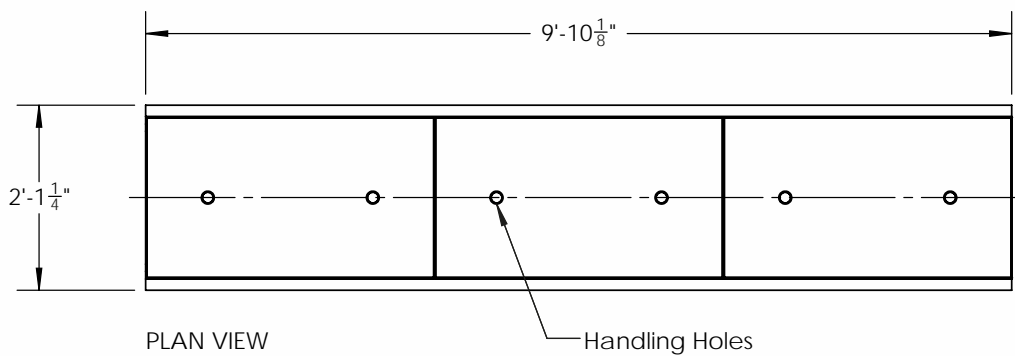
PLASTIBETON®
CHANNEL SYSTEM

Model No. 2012
Weight 821 lb



Channel and covers are made of
High Density Polymer Concrete

END VIEW



PLAN VIEW

Handling Holes

ITEMS ARE SUBJECT TO CHANGE WITHOUT NOTICE.

WON'T CRACK UNDER PRESSURE!

2 d'Inverness Avenue, Candiac
Quebec, Canada J5R 4W5
T 888.868.5214 • F 888.500.5568

Copyright © 2012

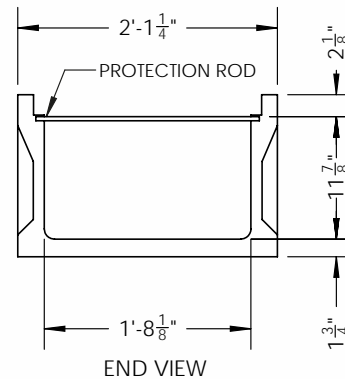
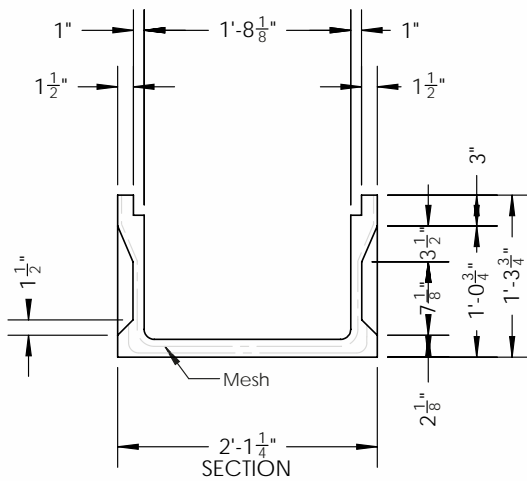
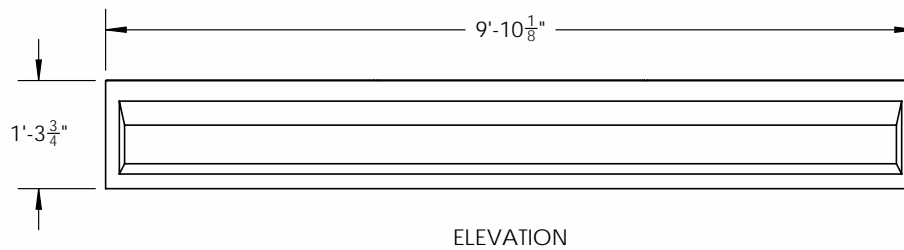
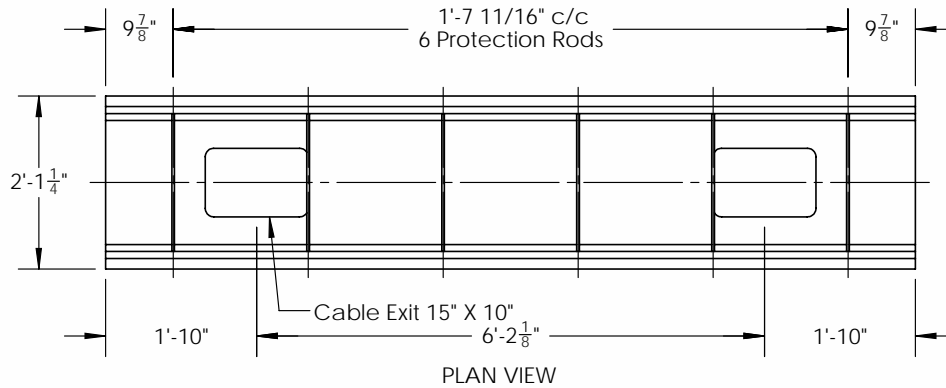


Oldcastle®
Enclosure Solutions

PLASTIBETON®
CHANNEL SYSTEM

®

Model No. 2012
Weight 821 lb



ITEMS ARE SUBJECT TO CHANGE WITHOUT NOTICE.

Copyright © 2012



2 d'Inverness Avenue, Candiac
Quebec, Canada J5R 4W5
T 888.868.5214 • F 888.500.5568

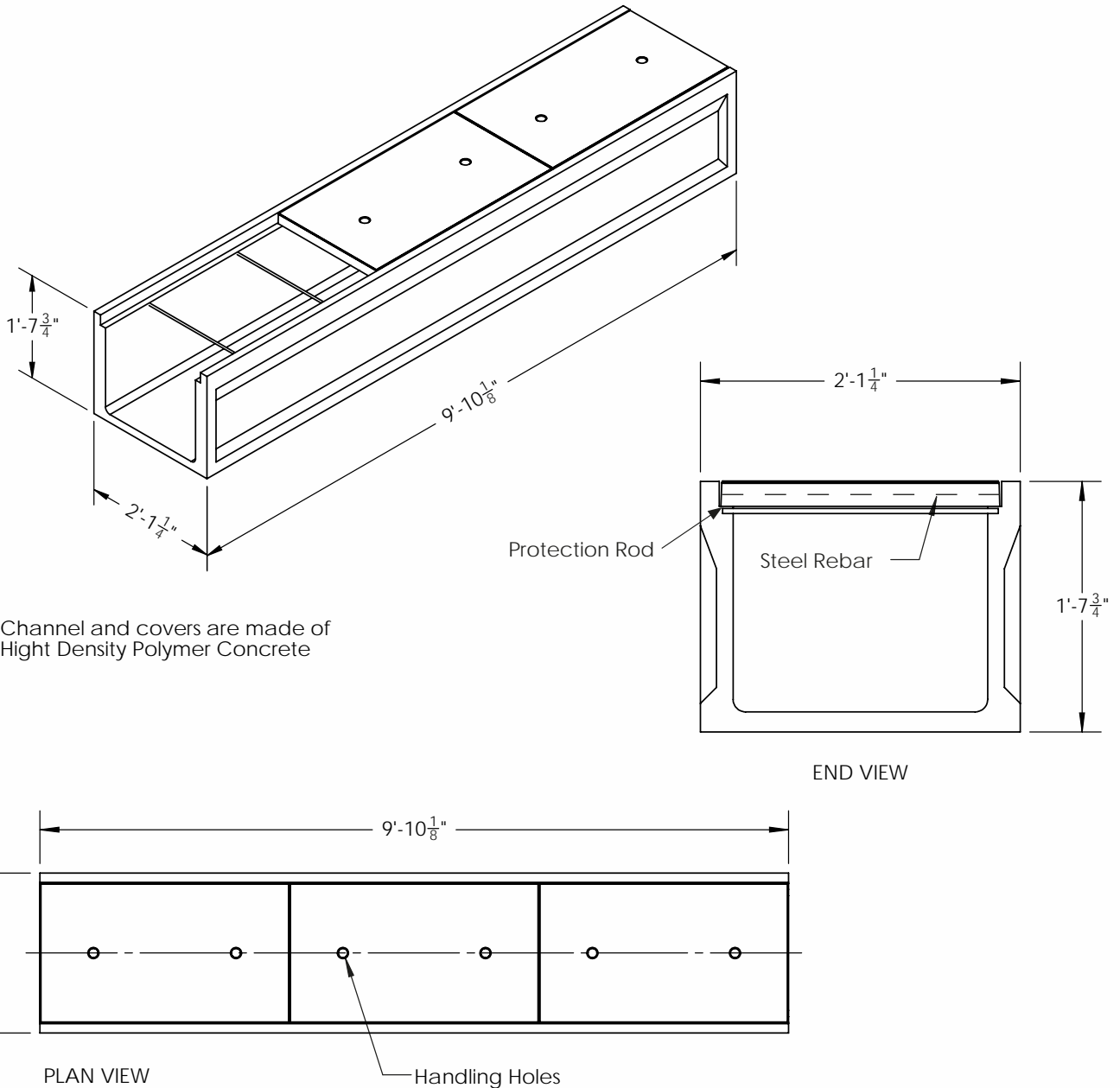
A SYSTEM YOU CAN RELY ON!



Oldcastle®
Enclosure Solutions

PLASTIBETON®
CHANNEL SYSTEM

Model No. 2016
Weight 977 lb



ITEMS ARE SUBJECT TO CHANGE WITHOUT NOTICE.

WON'T CRACK UNDER PRESSURE!

2 d'Inverness Avenue, Candiac
Quebec, Canada J5R 4W5
T 888.868.5214 • F 888.500.5568

Copyright © 2012

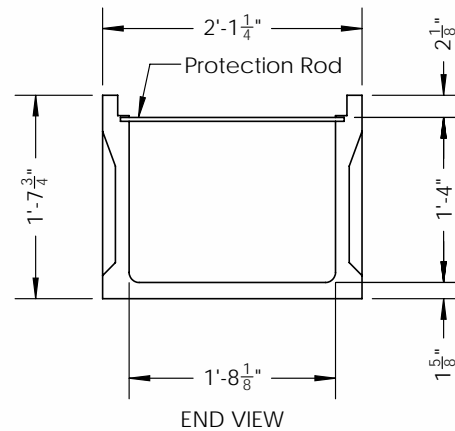
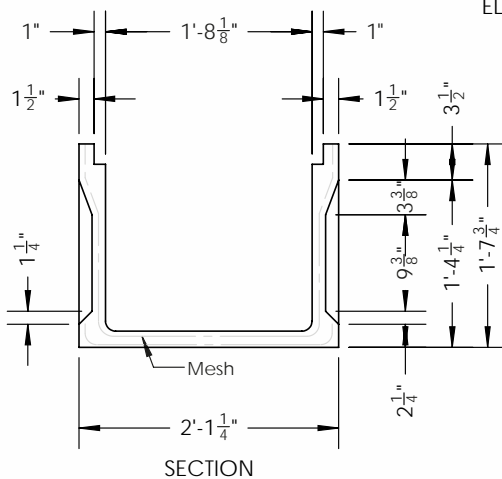
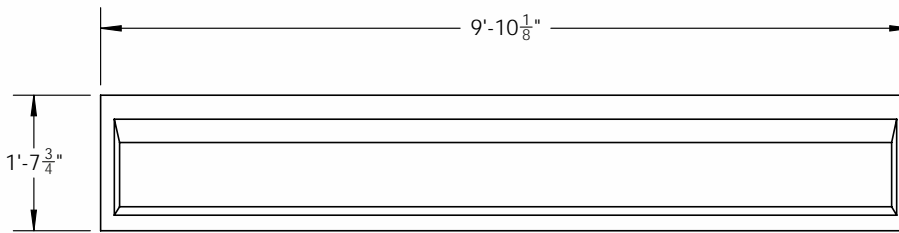
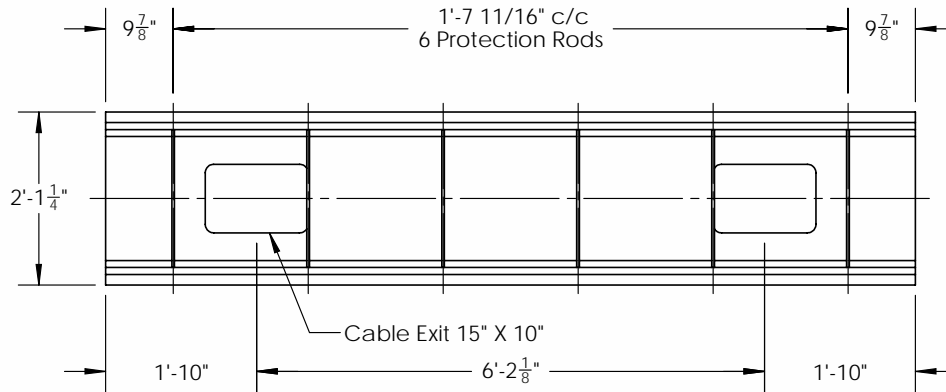


Oldcastle®
Enclosure Solutions

PLASTIBETON®
CHANNEL SYSTEM

®

Model No. 2016
Weight 977 lb



ITEMS ARE SUBJECT TO CHANGE WITHOUT NOTICE.

Copyright © 2012



2 d'Inverness Avenue, Candiac
Quebec, Canada J5R 4W5
T 888.868.5214 • F 888.500.5568

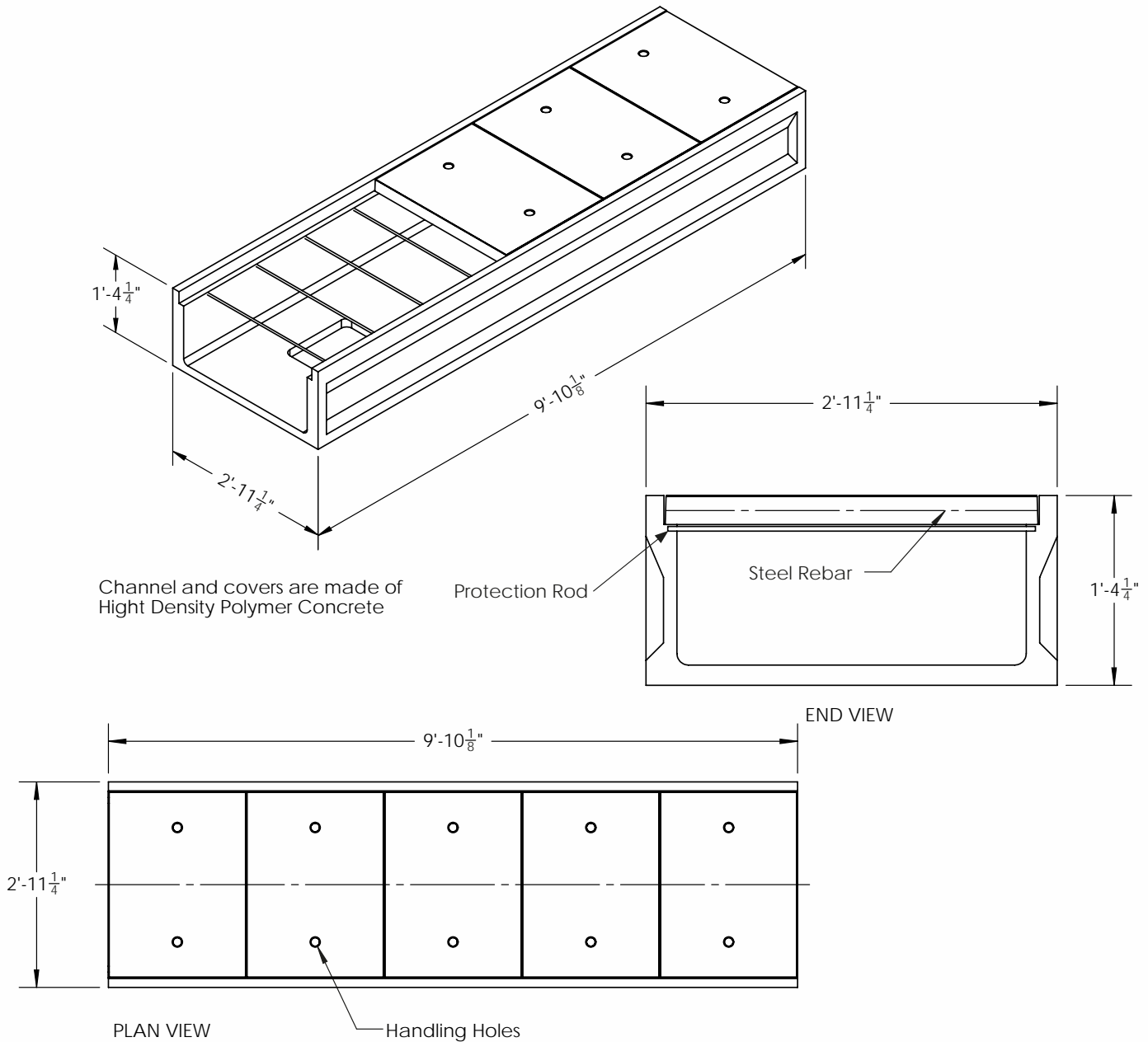
A SYSTEM YOU CAN RELY ON!



Oldcastle®
Enclosure Solutions

PLASTIBETON®
CHANNEL SYSTEM

Model No. 3012
Weight 1170 lb



ITEMS ARE SUBJECT TO CHANGE WITHOUT NOTICE.

WON'T CRACK UNDER PRESSURE!

2 d'Inverness Avenue, Candiac
Quebec, Canada J5R 4W5
T 888.868.5214 • F 888.500.5568

Copyright © 2012

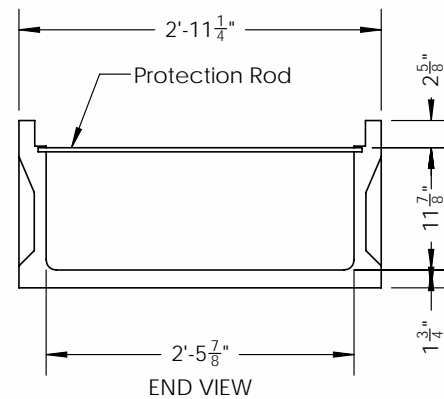
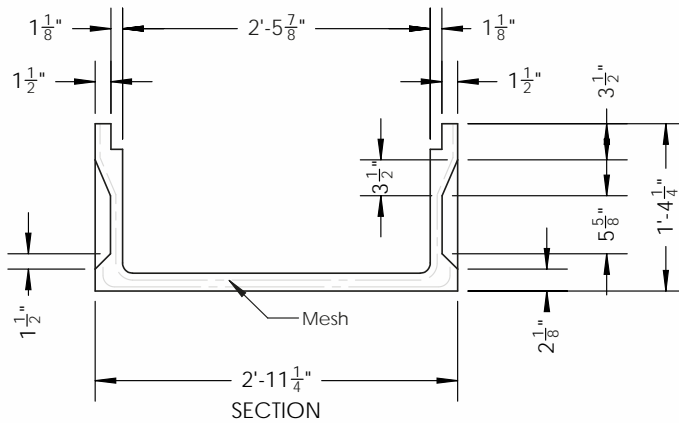
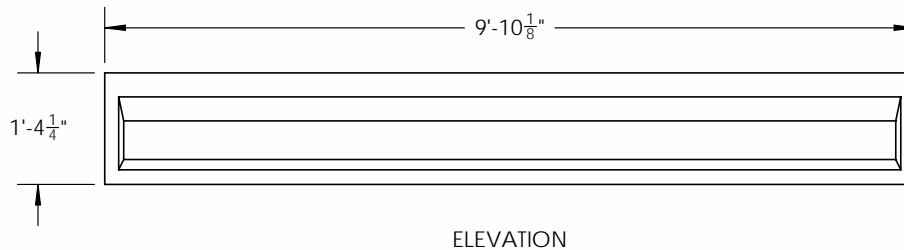
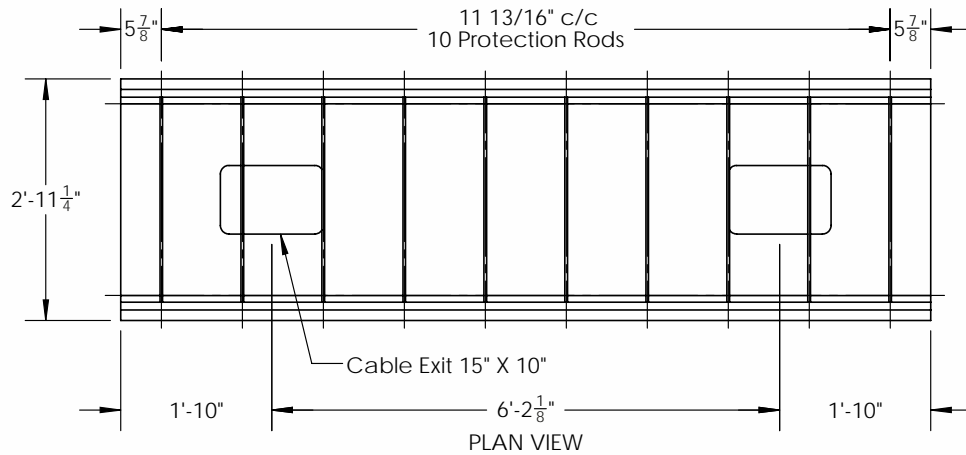


Oldcastle®
Enclosure Solutions

PLASTIBETON®
CHANNEL SYSTEM

®

Model No. 3012
Weight 1170 lb



ITEMS ARE SUBJECT TO CHANGE WITHOUT NOTICE.

Copyright © 2012



2 d'Inverness Avenue, Candiac
Quebec, Canada J5R 4W5
T 888.868.5214 • F 888.500.5568

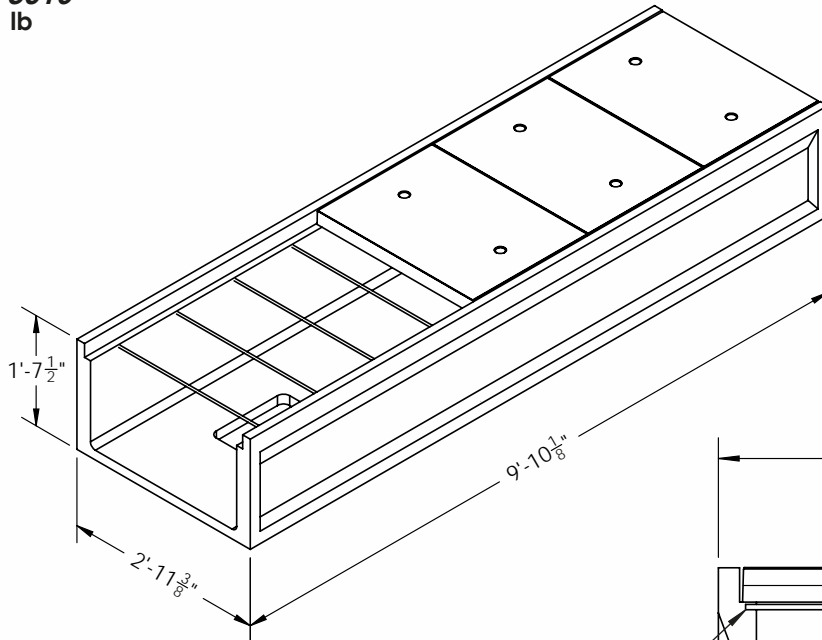
A SYSTEM YOU CAN RELY ON!



Oldcastle®
Enclosure Solutions

PLASTIBETON®
CHANNEL SYSTEM

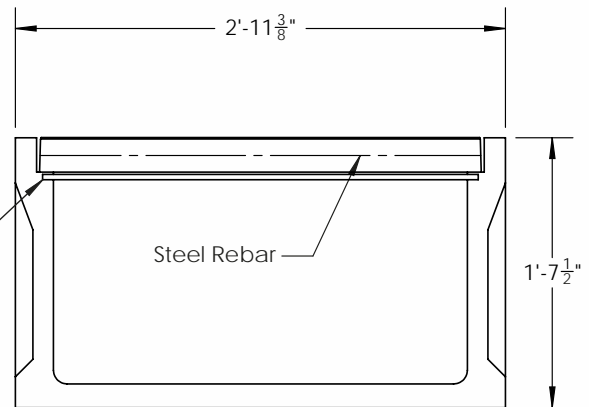
Model No. 3016
Weight 1326 lb



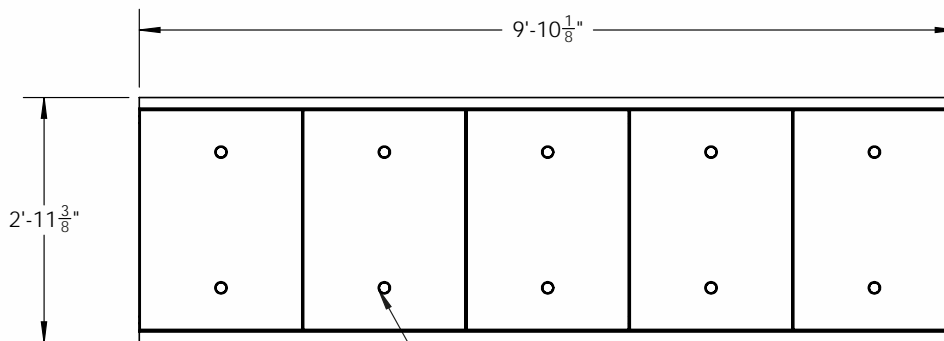
Channel and covers are made of
High Density Polymer Concrete

Protection Rod

Steel Rebar



END VIEW



PLAN VIEW

Handling Holes

ITEMS ARE SUBJECT TO CHANGE WITHOUT NOTICE.

WON'T CRACK UNDER PRESSURE!

2 d'Inverness Avenue, Candiac
Quebec, Canada J5R 4W5
T 888.868.5214 • F 888.500.5568

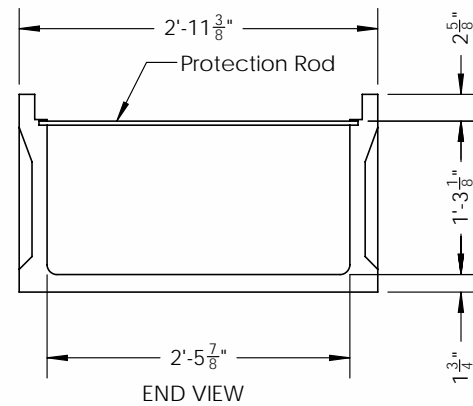
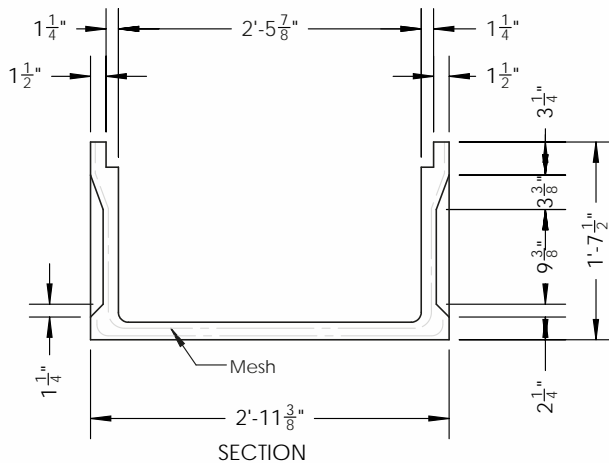
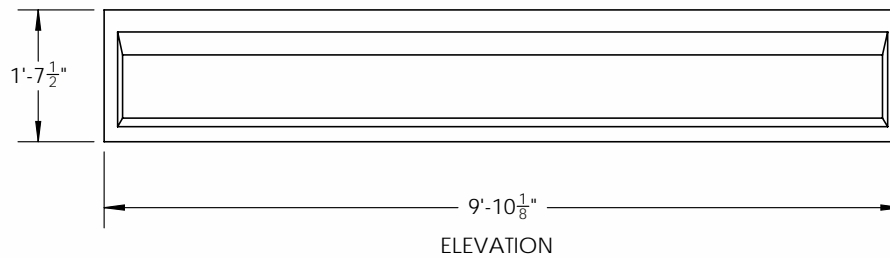
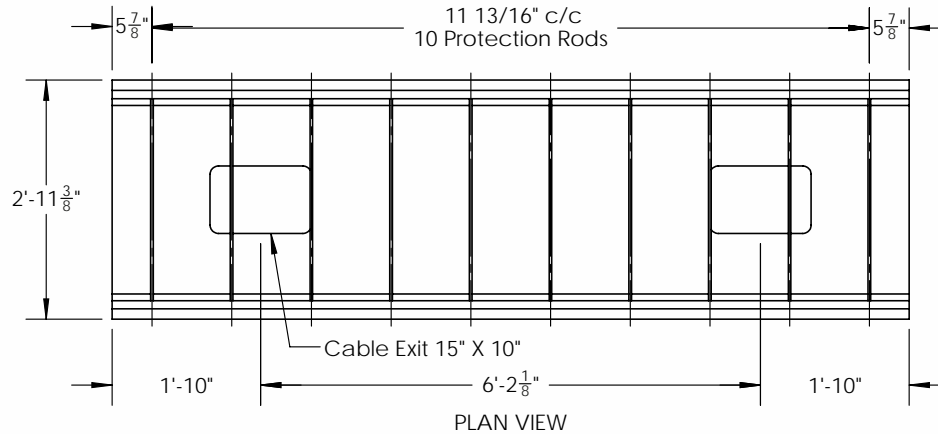
Copyright © 2012



Oldcastle®
Enclosure Solutions

PLASTIBETON®
CHANNEL SYSTEM

Model No. 3016
Weight 1326 lb



ITEMS ARE SUBJECT TO CHANGE WITHOUT NOTICE.

Copyright © 2012



2 d'Inverness Avenue, Candiac
Quebec, Canada J5R 4W5
T 888.868.5214 • F 888.500.5568

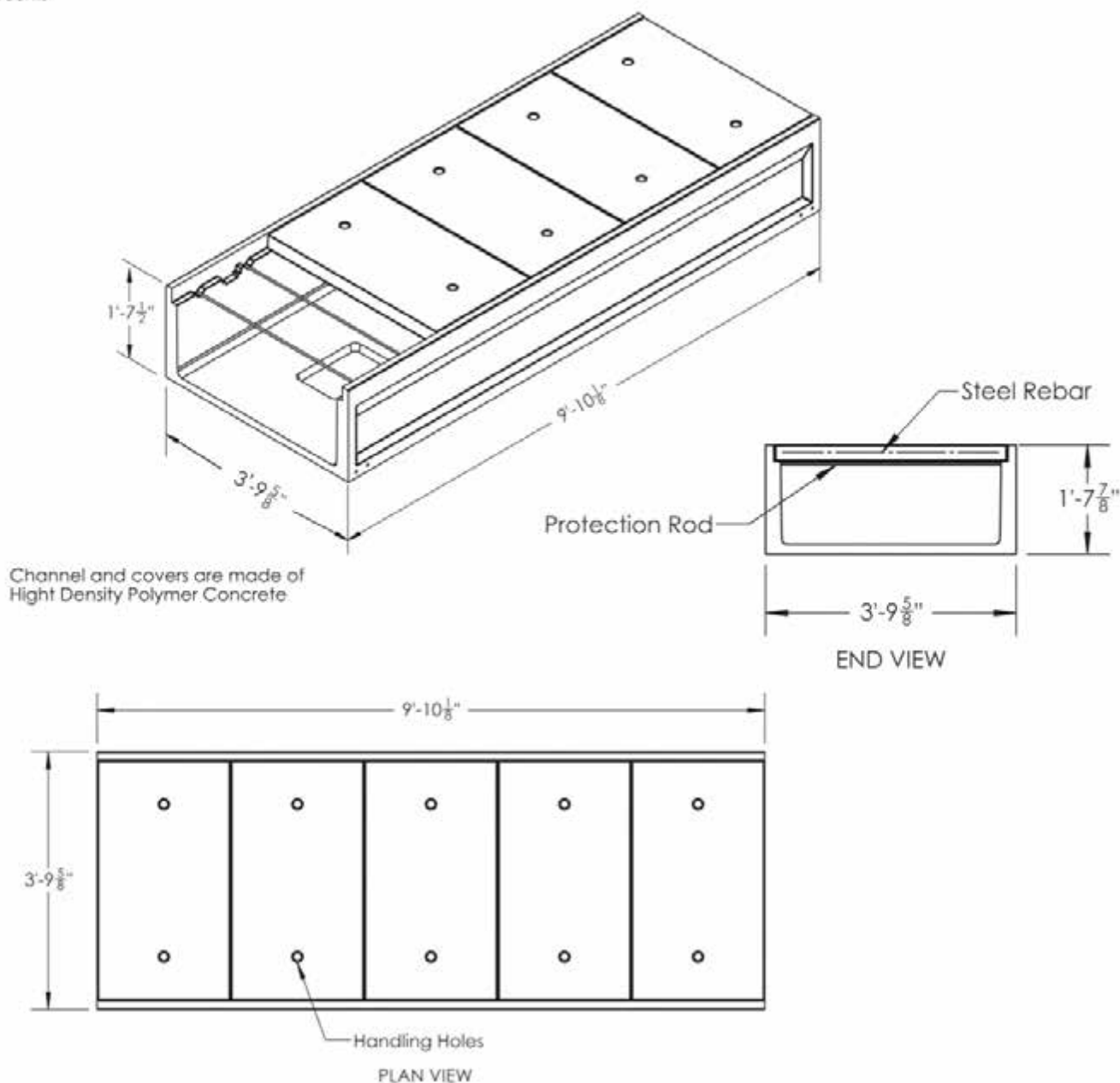
A SYSTEM YOU CAN RELY ON!



Oldcastle®
Enclosure Solutions

PLASTIBETON®
CHANNEL SYSTEM

Model No. 4016
Weight 1535 lb



WON'T CRACK UNDER PRESSURE!

2 d'Inverness Avenue, Candiac
Quebec, Canada J5R 4W5
T 888.868.5214 • F 888.500.5568

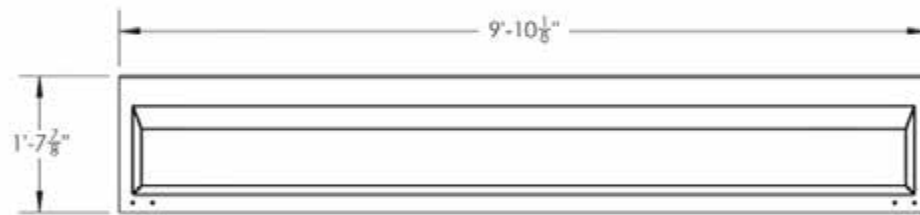
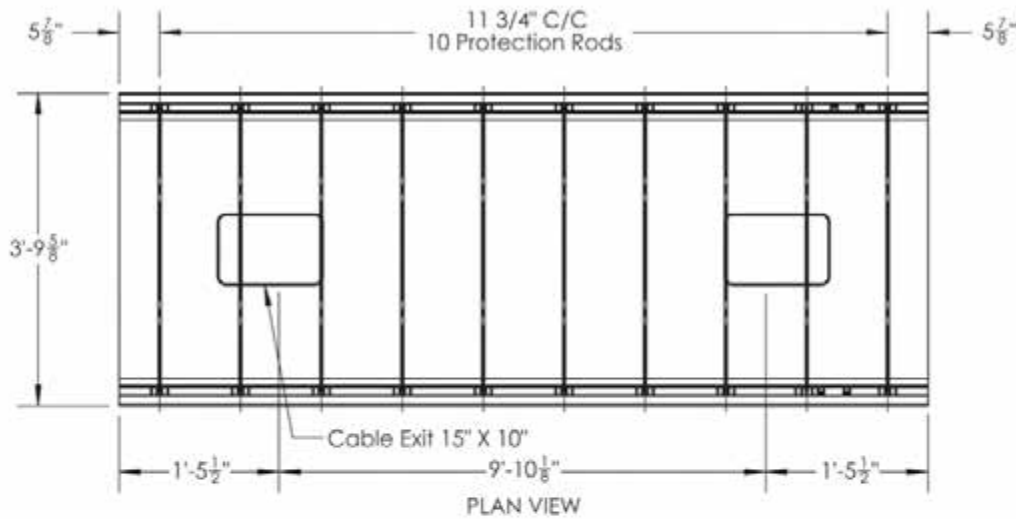
Copyright © 2012



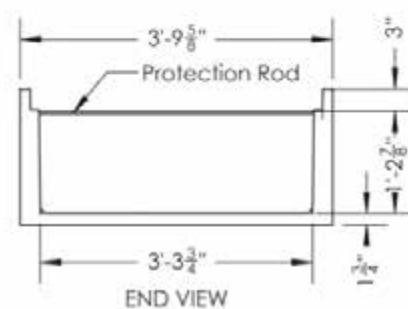
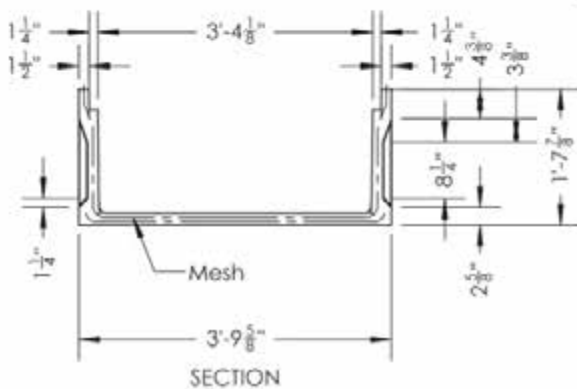
®

Model No. 4016

Weight 1535 lb



ELEVATION



ITEMS ARE SUBJECT TO CHANGE WITHOUT NOTICE.

Copyright © 2012

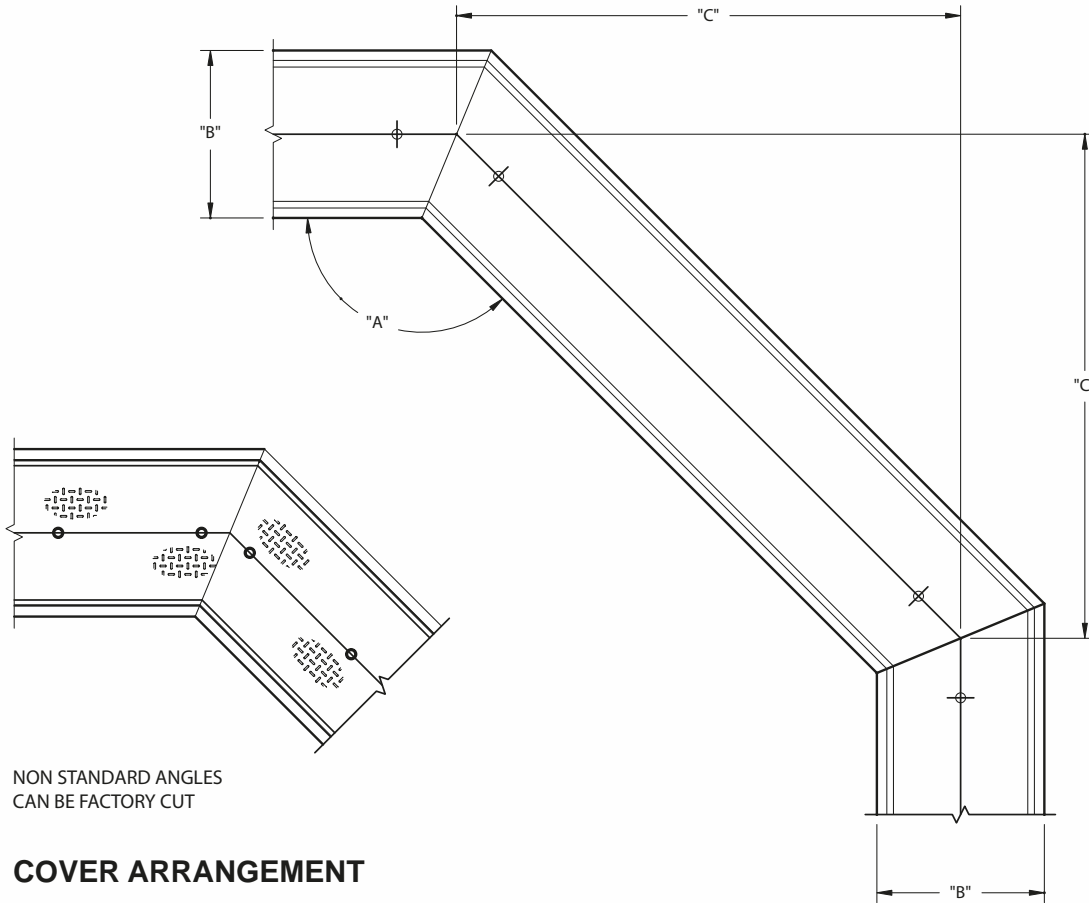


2 d'Inverness Avenue, Candiac
Quebec, Canada J5R 4W5
T **888.868.5214** • F **888.500.5568**

A SYSTEM YOU CAN RELY ON!



Horizontal Deviation



COVER ARRANGEMENT

MODEL	"A"	"B"	"C"
68	135°	0'-10 1/4"	3'-4 3/4"
128	135°	1'- 5 1/4"	3'-3 1/4"
1216	135°	1'- 5 1/4"	3'-3 1/4"
2012	135°	2'- 1 1/4"	3'-2"
2016	135°	2'- 1 1/4"	3'-2"
3012	135°	2'-11 1/4"	3'-0 5/8"
3016	135°	2'-11 1/4"	3'-0 5/8"
4016	135°	3'- 9 5/8"	3'-1 5/8"

TRENCH ARRANGEMENT

WON'T CRACK UNDER PRESSURE!

2 d'Inverness Avenue, Candiac
Quebec, Canada J5R 4W5
T 888.868.5214 • F 888.500.5568

Copyright © 2012

ITEMS ARE SUBJECT TO CHANGE WITHOUT NOTICE.

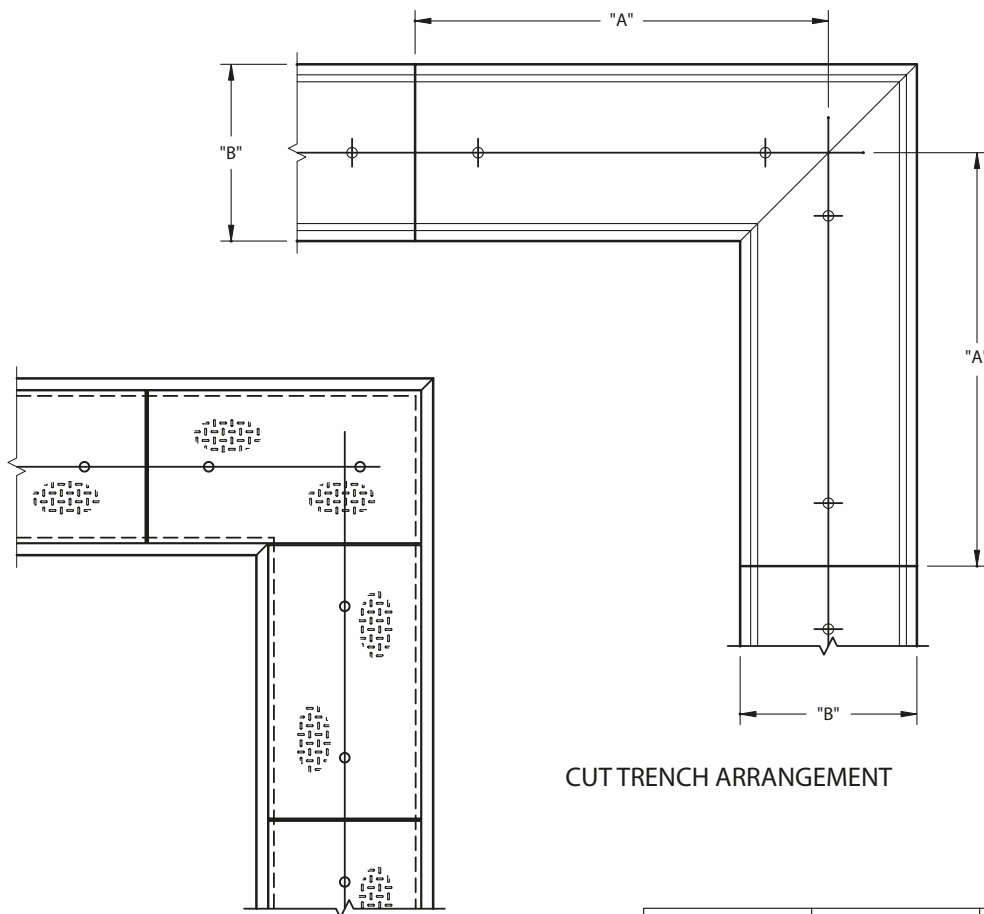


Oldcastle®
Enclosure Solutions

PLASTIBETON®
CHANNEL SYSTEM

®

Right Angle Corner



CUT TRENCH ARRANGEMENT

COVER ARRANGEMENT

MODEL	"A"	"B"
68	4'-11 1/16"	0'-10 1/4"
128	4'-11 1/16"	1'- 5 1/4"
1216	4'-11 1/16"	1'- 5 1/4"
2012	4'-11 1/16"	2'- 1 1/4"
2016	4'-11 1/16"	2'- 1 1/4"
3012	4'-11 1/16"	2'-11 1/4"
3016	4'-11 1/16"	2'-11 1/4"
4016	4'-11 1/16"	3'- 9 5/8"

ITEMS ARE SUBJECT TO CHANGE WITHOUT NOTICE.

Copyright © 2012



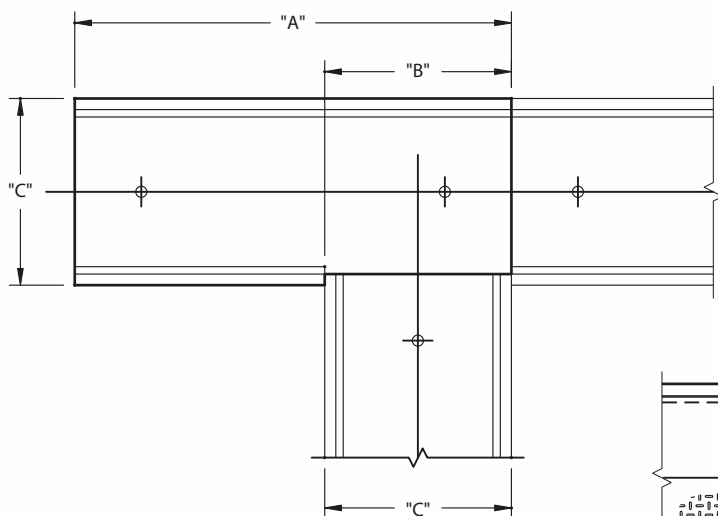
2 d'Inverness Avenue, Candiac
Quebec, Canada J5R 4W5

T 888.868.5214 • F 888.500.5568

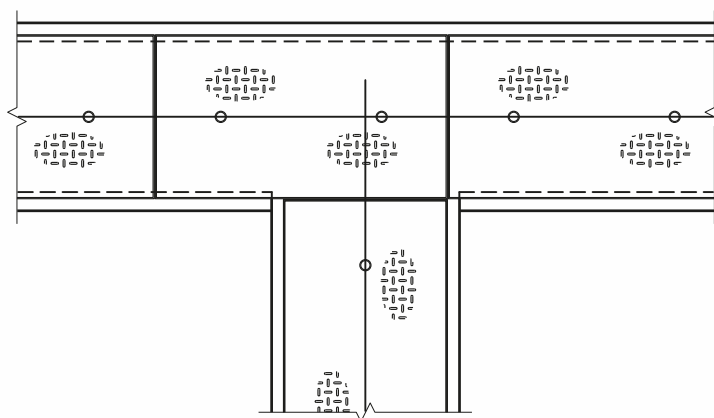
A SYSTEM YOU CAN RELY ON!



Single "T" Shape



"T" ARRANGEMENT TRENCH



"T" ARRANGEMENT COVERS

MODEL	"A"	"B"	"C"
68	4'-11 1/16"	0'-10 1/2"	0'-10 1/4"
128	4'-11 1/16"	1'- 5 1/2"	1'- 5 1/4"
1216	4'-11 1/16"	1'- 5 1/2"	1'- 5 1/4"
2012	4'-11 1/16"	2'- 1 1/2"	2'- 1 1/4"
2016	4'-11 1/16"	2'- 1 1/2"	2'- 1 1/4"
3012	4'-11 1/16"	2'-11 1/2"	2'-11 1/4"
3016	4'-11 1/16"	2'-11 1/2"	2'-11 1/4"
4016	4'-11 1/16"	3'- 9 7/8"	3'- 9 5/8"

WON'T CRACK UNDER PRESSURE!

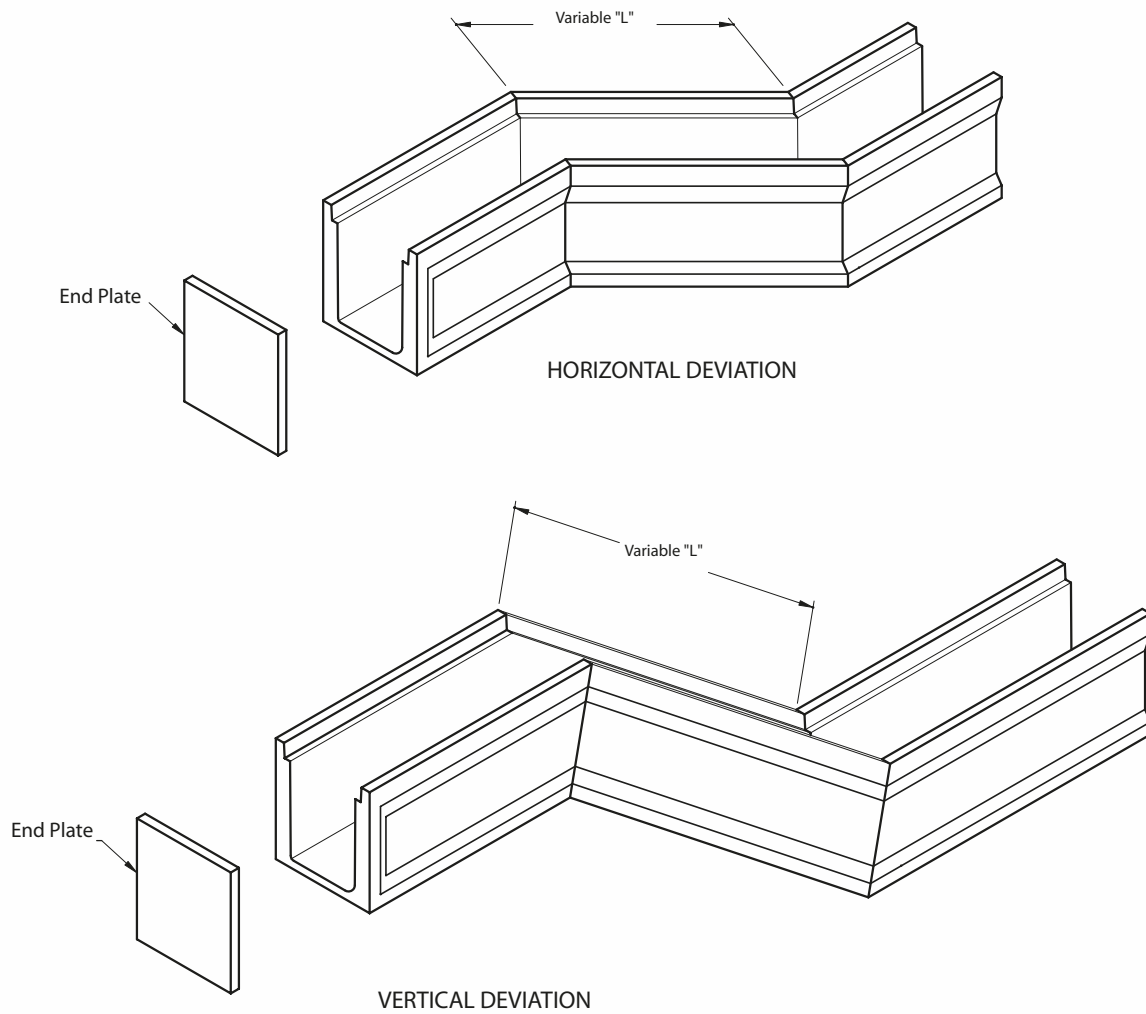
2 d'Inverness Avenue, Candiac
Quebec, Canada J5R 4W5

T 888.868.5214 • F 888.500.5568

Copyright © 2012

ITEMS ARE SUBJECT TO CHANGE WITHOUT NOTICE.

Deviation



ITEMS ARE SUBJECT TO CHANGE WITHOUT NOTICE.

Copyright © 2012

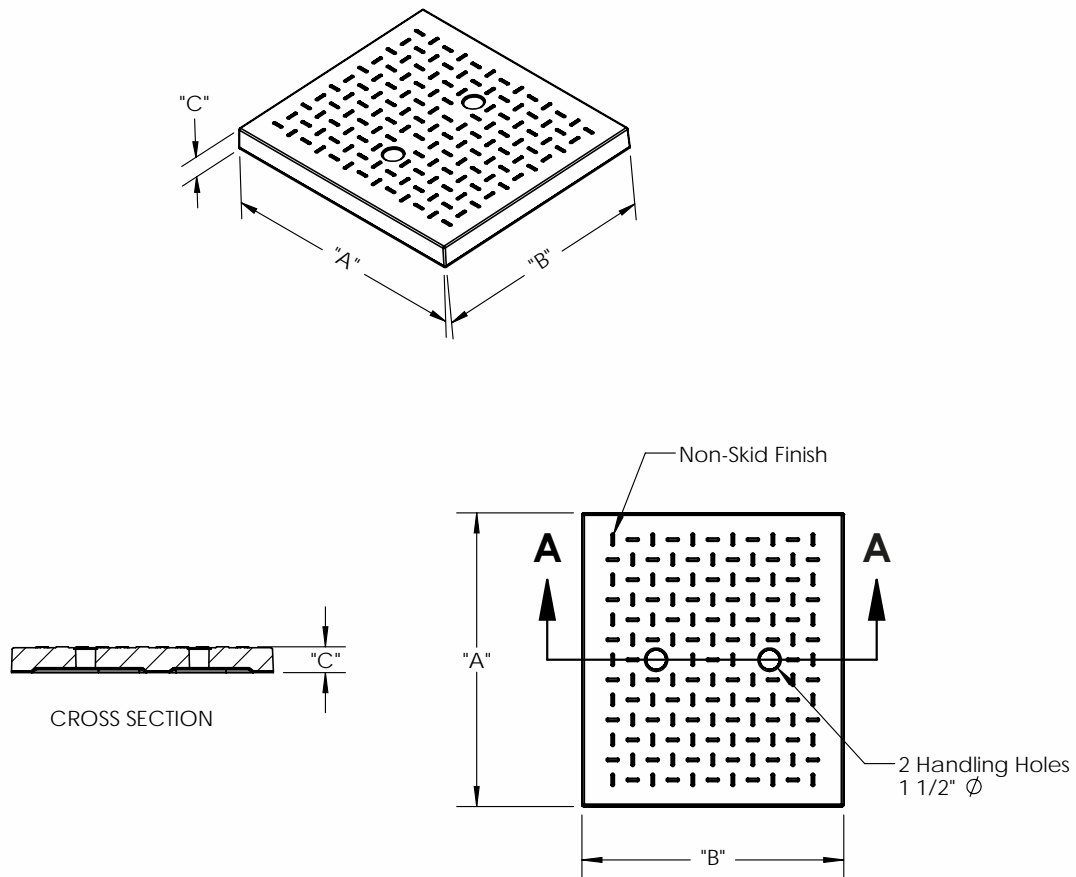


2 d'Inverness Avenue, Candiac
Quebec, Canada J5R 4W5
T 888.868.5214 • F 888.500.5568

A SYSTEM YOU CAN RELY ON!



**Channel Half Cover to meet
OSHA requirements**



MODEL	"A"	"B"	"C"	WEIGHT
2012	1'-10"	1'-7 5/8"	2"	69 lb
2016	1'-10"	1'-7 5/8"	2"	69 lb
3012	11 3/4"	2'-8"	2 1/2"	95 lb
3016	11 3/4"	2'-8"	2 1/2"	95 lb

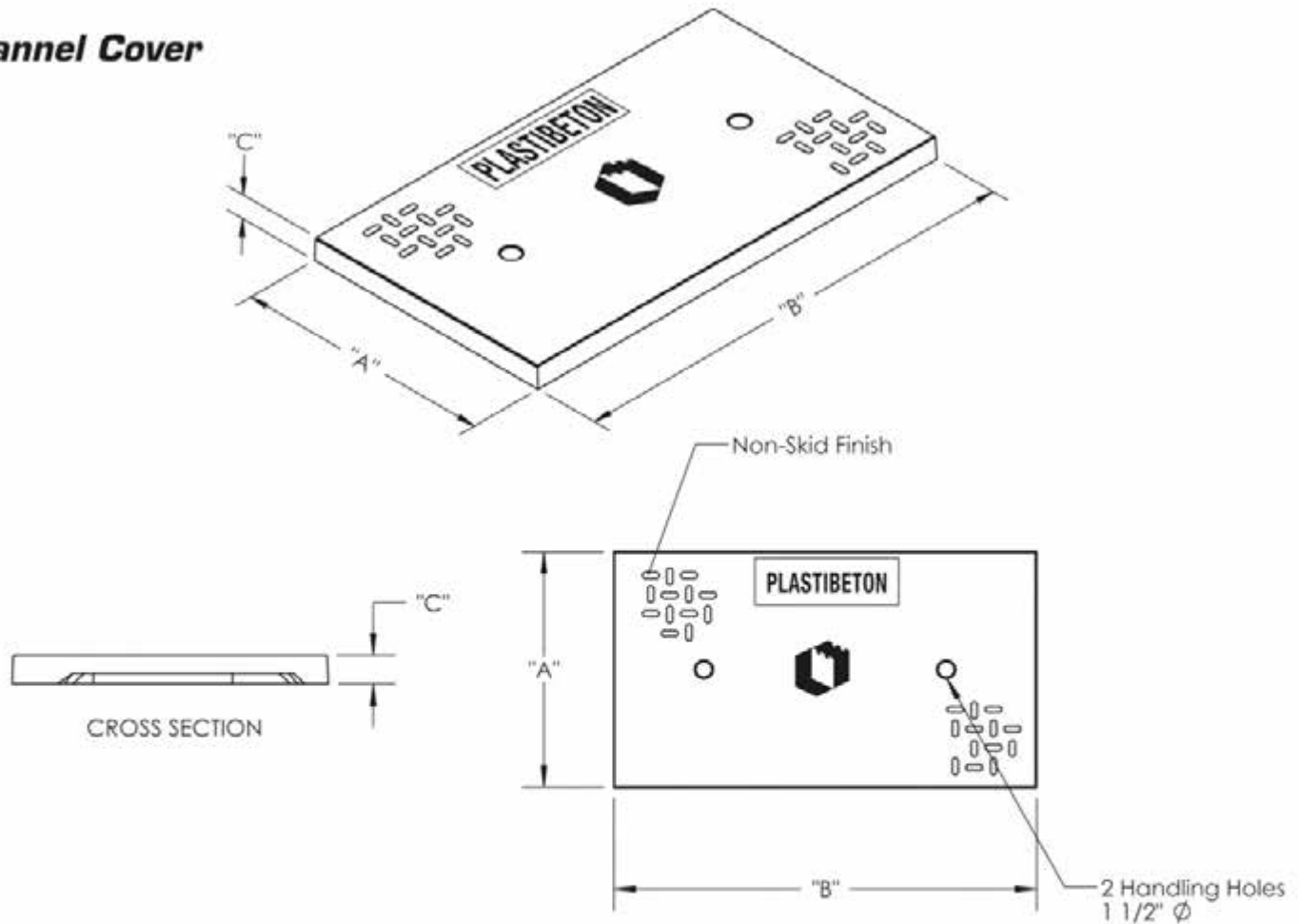
WON'T CRACK UNDER PRESSURE!

2 d'Inverness Avenue, Candiac
Quebec, Canada J5R 4W5
T 888.868.5214 • F 888.500.5568

Copyright © 2012

ITEMS ARE SUBJECT TO CHANGE WITHOUT NOTICE.

Channel Cover

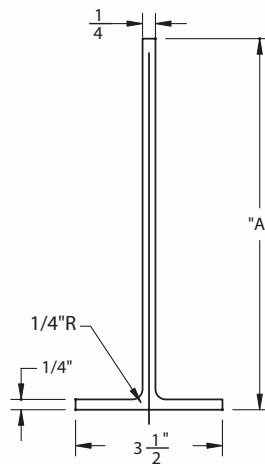
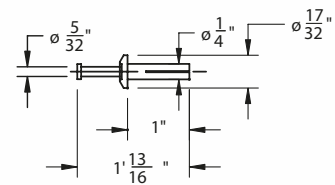
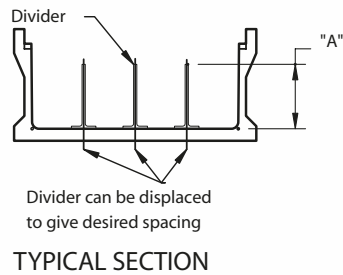
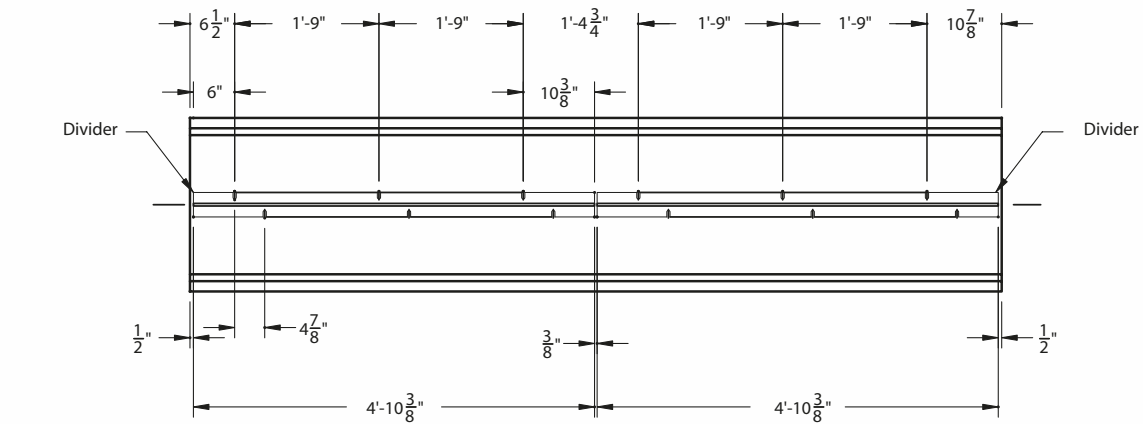


MODEL	"A"	"B"	"C"	WEIGHT
68	0'-7 1/2"	3'-3 3/8"	1 1/4"	27 lb
128	1'-2"	3'-3 3/8"	2 1/4"	82 lb
1216	1'-2"	3'-3 3/8"	2 1/4"	82 lb
2012	1'-10"	3'-3 3/8"	2"	115 lb
2016	1'-10"	3'-3 3/8"	2"	115 lb
3012	1'-11 5/8"	2'-7 7/8"	2 1/2"	130 lb
3016	1'-11 5/8"	2'-7 7/8"	2 1/2"	130 lb
4016	1'-11 5/8"	3'-6 3/8"	3"	215 lb

ITEMS ARE SUBJECT TO CHANGE WITHOUT NOTICE.



Divider



MODEL	"A"
68	6"
128	6"
1216	12"
2012	9"
2016	12"
3012	9"
3016	12"
4016	12"

WON'T CRACK UNDER PRESSURE!

2 d'Inverness Avenue, Candiac
Quebec, Canada J5R 4W5
T 888.868.5214 • F 888.500.5568

Copyright © 2012

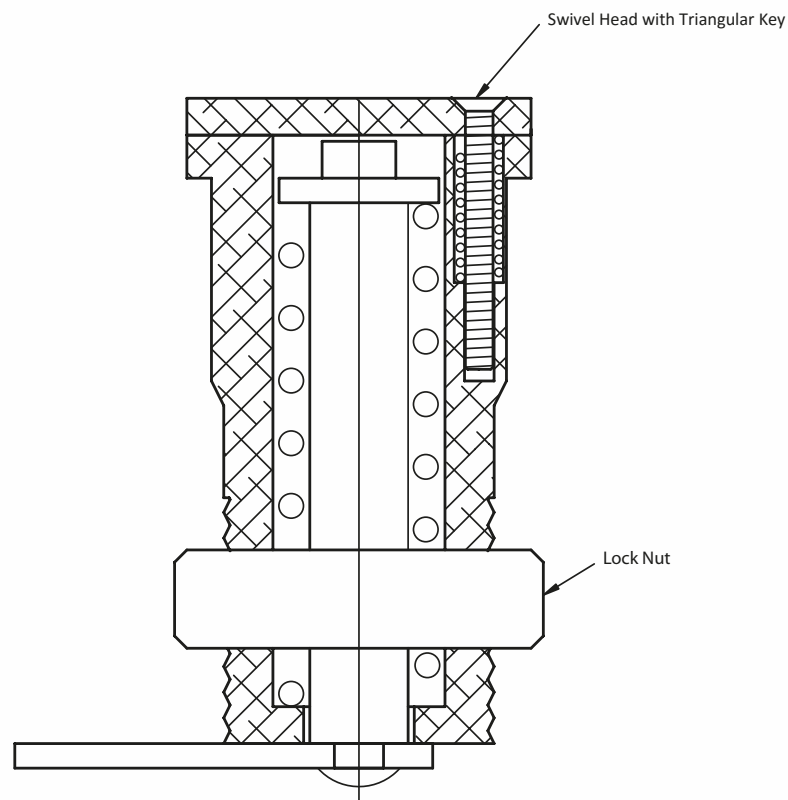
ITEMS ARE SUBJECT TO CHANGE WITHOUT NOTICE.



Oldcastle®
Enclosure Solutions

PLASTIBETON®
CHANNEL SYSTEM

Lock Type “A”



ITEMS ARE SUBJECT TO CHANGE WITHOUT NOTICE.

Copyright © 2012



2 d'Inverness Avenue, Candiac
Quebec, Canada J5R 4W5
T 888.868.5214 • F 888.500.5568

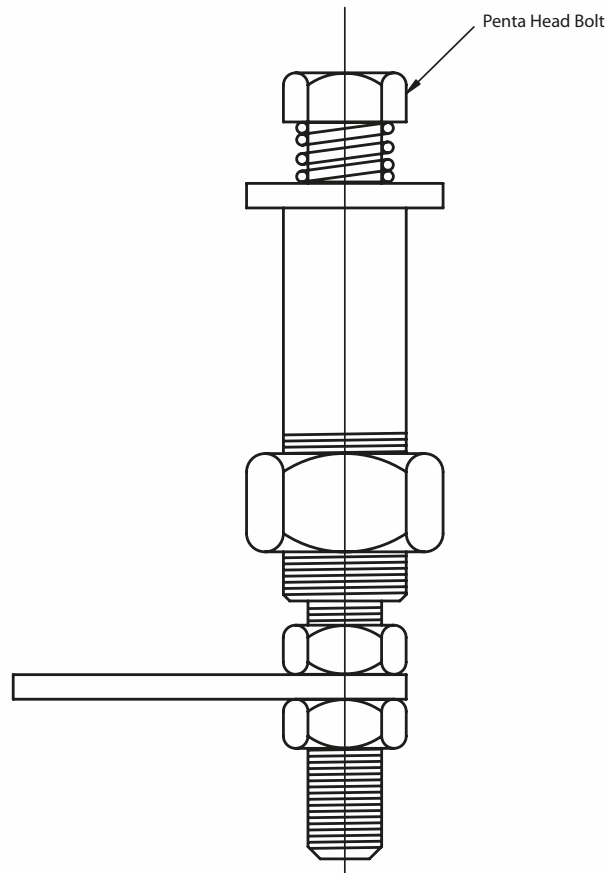
A SYSTEM YOU CAN RELY ON!



Oldcastle®
Enclosure Solutions

PLASTIBETON®
CHANNEL SYSTEM

Lock Type "B"



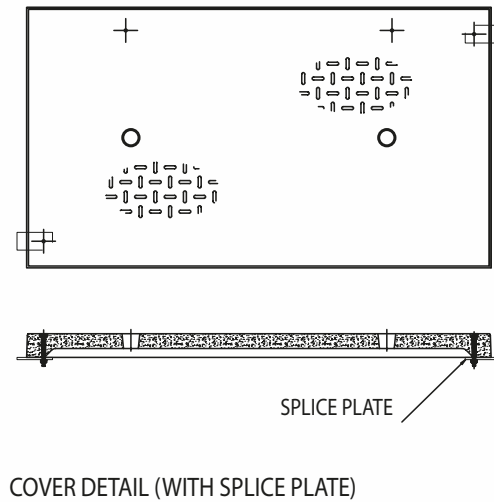
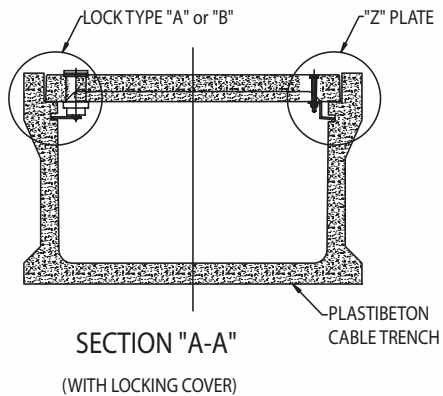
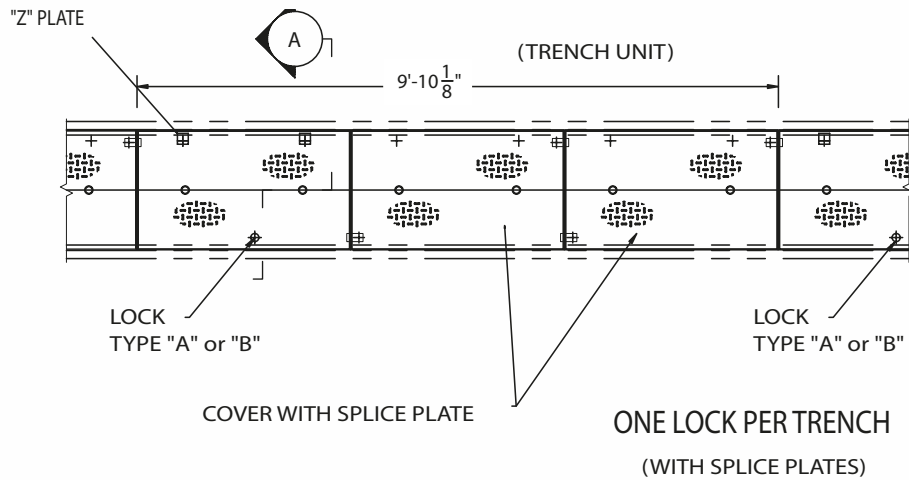
ITEMS ARE SUBJECT TO CHANGE WITHOUT NOTICE.

WON'T CRACK UNDER PRESSURE!

2 d'Inverness Avenue, Candiac
Quebec, Canada J5R 4W5
T 888.868.5214 • F 888.500.5568

Copyright © 2012

Single Cover / Locking System (optional)



ITEMS ARE SUBJECT TO CHANGE WITHOUT NOTICE.

Copyright © 2012



2 d'Inverness Avenue, Candiac
Quebec, Canada J5R 4W5
T 888.868.5214 • F 888.500.5568

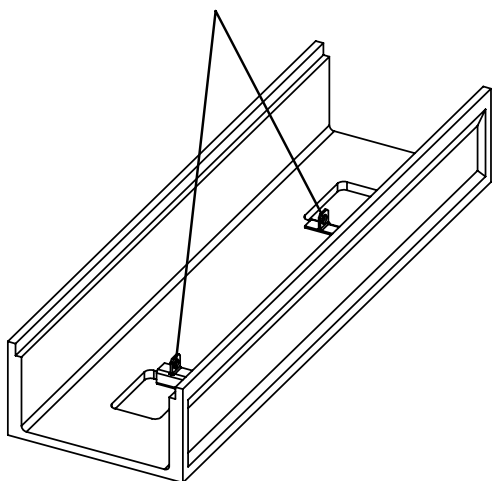
A SYSTEM YOU CAN RELY ON!



Oldcastle®
Enclosure Solutions

PLASTIBETON®
CHANNEL SYSTEM

LIFTING HOOK



LIFTING HOOK FOR
68-128 TRENCH



LIFTING HOOK FOR
1216-2012-2016 TRENCH

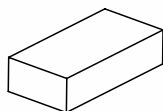


LIFTING HOOK FOR
3012-3016-4016

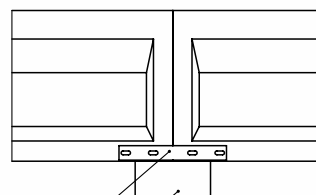
LEVELING BLOCK ATTACHMENT PLATE *(available upon request)*



ATTACHMENT PLATE

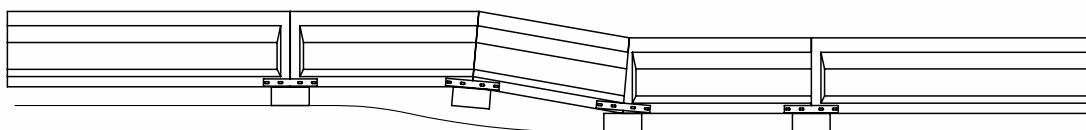


LEVELING BLOCK



ATTACHMENT PLATE

LEVELING BLOCK



FOR ALL TRENCH MODELS

WON'T CRACK UNDER PRESSURE!

2 d'Inverness Avenue, Candiac
Quebec, Canada J5R 4W5
T 888.868.5214 • F 888.500.5568

Copyright © 2012

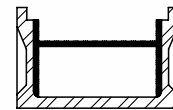
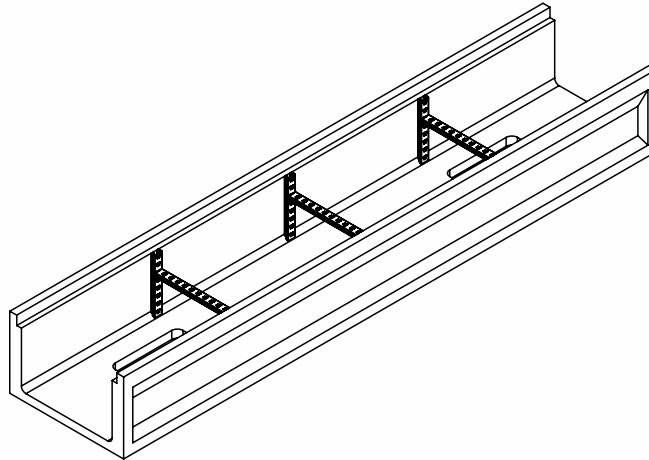
ITEMS ARE SUBJECT TO CHANGE WITHOUT NOTICE.



Oldcastle®
Enclosure Solutions

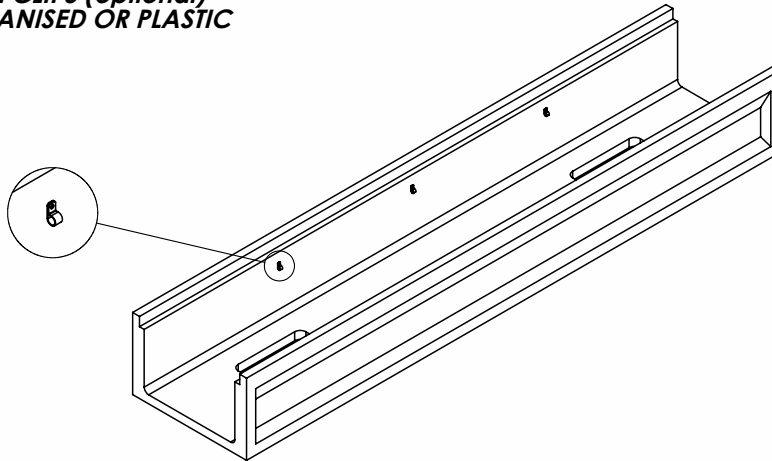
PLASTIBETON®
CHANNEL SYSTEM

CANTRUSS / UNISTRUT (optional)



CROSS SECTION

***CABLE CLIPS (optional)
GALVANISED OR PLASTIC***



ITEMS ARE SUBJECT TO CHANGE WITHOUT NOTICE.

Copyright © 2012



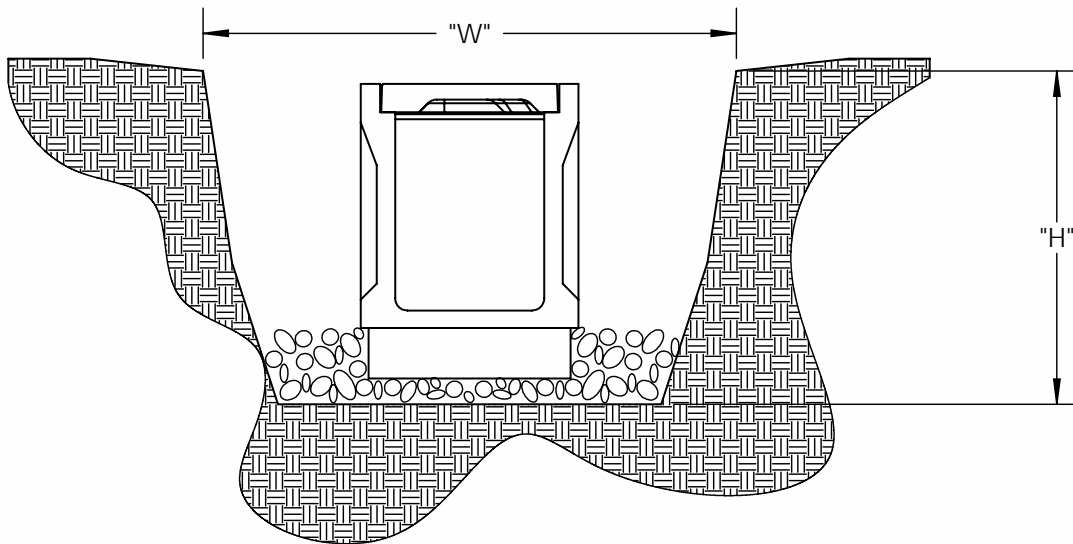
2 d'Inverness Avenue, Candiac
Quebec, Canada J5R 4W5
T 888.868.5214 • F 888.500.5568

A SYSTEM YOU CAN RELY ON!



Installation Instructions ***Excavation***

- * Open the trench with back hoe as per size for specific Trench Model.
- * Install a layer of firmly compacted stone 6" thick, to bring the side walls of the channel to stand 2" below the final finished grade level.



EQUIPMENT REQUIRED

- * BACK HOE
- * NYLON SLINGS WITH HOOKS
- * SHOVELS
- * TAPE MEASURE 16'/100'
- * WRECKING BAR
- * SLEDGE HAMMER
- * CORD LINE
- * LINE LEVEL

EXCAVATION SIZE CHART

MODEL	WIDTH	HEIGHT
68	36"	18"
128	45"	18"
1216	45"	27"
2012	50"	24"
2016	50"	27"
3012	60"	24"
3016	60"	27"
4016	70"	27"

ITEMS ARE SUBJECT TO CHANGE WITHOUT NOTICE.

WON'T CRACK UNDER PRESSURE!

2 d'Inverness Avenue, Candiac
Quebec, Canada J5R 4W5
T 888.868.5214 • F 888.500.5568

Copyright © 2012

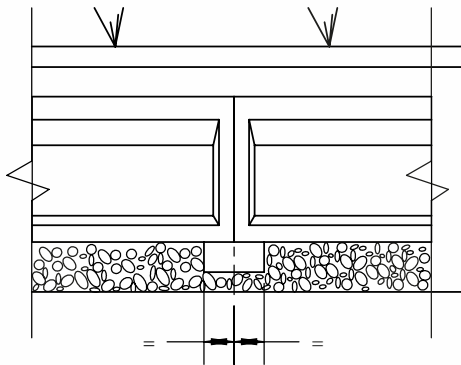
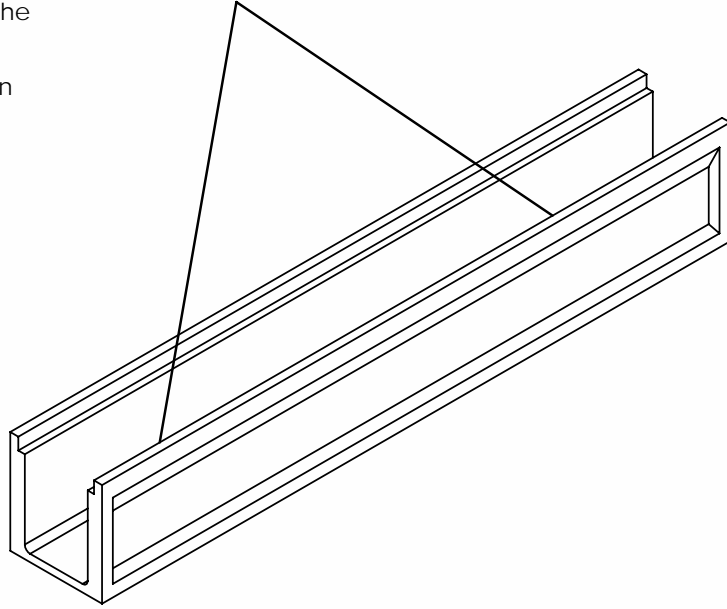


Installation Instructions

Handling

* Using mechanized equipment and a lifting harness or slings fitted with channel lifting devices (see accessories) inserted in drainage holes, set the channels in place.

* The channels are butted-joined to each other on the leveling blocks, each channel should be supported for 4" on the leveling blocks at joints.



WEIGHT CHART
HDPC H-20 TRENCH

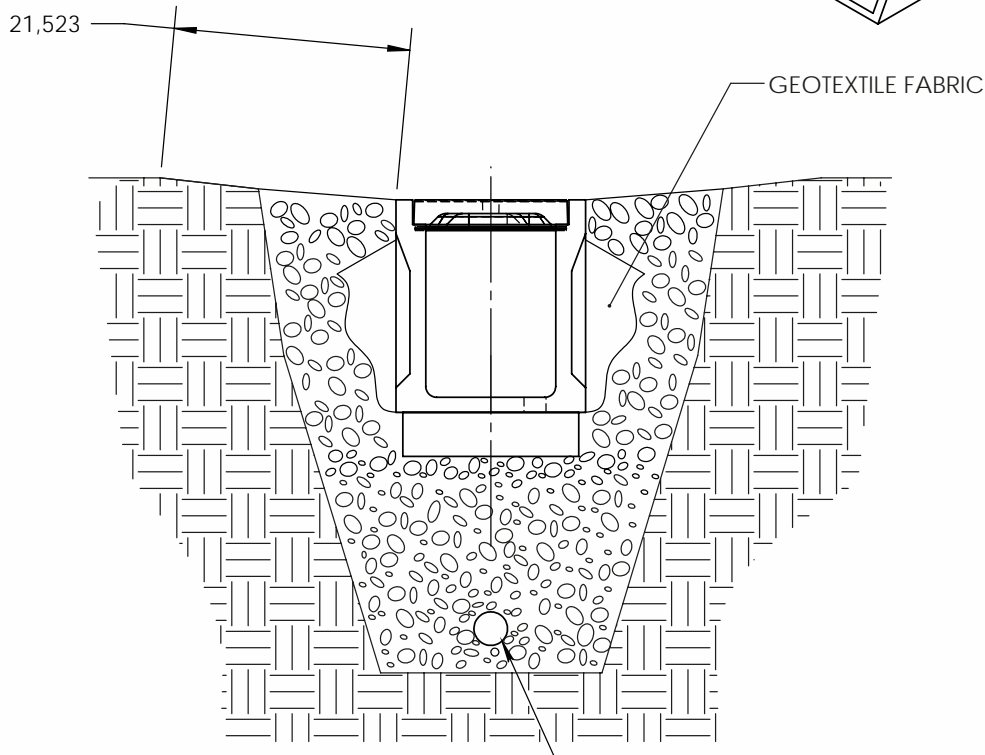
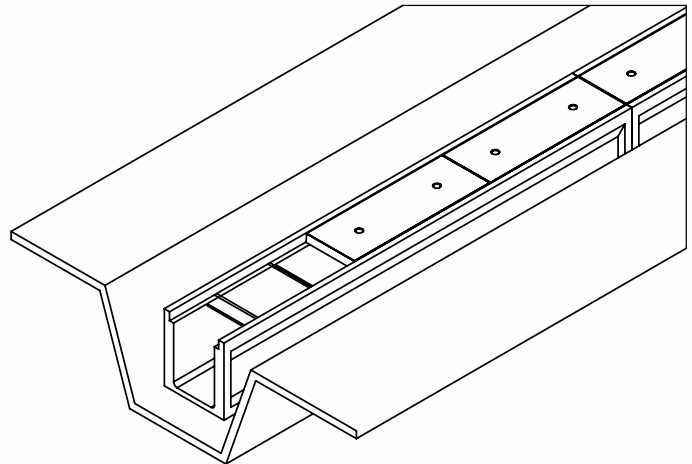
MODEL	WEIGHT
68	415 lb
128	615 lb
1216	920 lb
2012	801 lb
2016	1030 lb
3012	1100 lb
3016	1250 lb
4016	1450 lb*

ITEMS ARE SUBJECT TO CHANGE WITHOUT NOTICE.



Installation Instructions Leveling

- * Finish tamping the earth against the channel side walls and finish stone. Channel top set at 2" below final grade level.
- * Install protection rods.
- * Cover channels with HDPC covers (3 per full section of channel) (5 covers for model 3012) using cover lifting hooks, (2) provided.
- * **Covers should not overlap two trench sections.**



WEIGHT CHART
HDPC H-20 COVERS

MODEL	WEIGHT
68	27 lb
128	82 lb
1216	82 lb
2012	115 lb
2016	115 lb
3012	130 lb
3016	130 lb
4016	215 lb*

*PRELIMINARY WEIGHT

WON'T CRACK UNDER PRESSURE!

2 d'Inverness Avenue, Candiac
Quebec, Canada J5R 4W5
T 888.868.5214 • F 888.500.5568

Copyright © 2012

ITEMS ARE SUBJECT TO CHANGE WITHOUT NOTICE.



SUGGESTED MATERIAL SPECIFICATIONS

Property

- Compressive strength
- Modulus of elasticity in compression
- Modulus of rupture
- Direct tensile strength
- UV radiation
- UV radiation
- Coefficient of expansion/contraction
- Water absorption
- Specific Gravity
- Fire resistance

Test Method

- ASTM C-170
- ASTM C-469
- ASTM C-99
- ASTM C-190
- ASTM G-53
- ASTM G-154
- ASTM C-97
- ASTM C-97
- ASTM E-84
- NFPA 130
- ASTM C-666
- ASTM C-672
- ASTM D-756 (E)
- ASTM D-543
- ASTM D-543
- ASTM D-543
- ASTM D-543
- ASTM D-543
- ASTM D-543
- ASTM D-543
- ASTM D-543

Test Result

- Min: 17000 psi
- Min: 5.4×10^6 psi
- Min: 5800 psi
- Min: 1560 psi
- No significant change after 1000 hours
- No change
- $6 \times 10^{-6} \text{ } ^\circ\text{F}^{-1}$
- Max: 0.31%
- 150 lb/ft³ 2.40
- FSI 5 SD 30
- Passed
- No change
- No change
- No change
- No significant change
- No significant change
- No significant change
- No significant change
- No significant change
- No significant change
- No significant change
- No significant change



SUGGESTED SPECIFICATIONS

GENERAL

1. The _____ shall design, furnish, and install a continuous cable trough, as specified herein and shown on the contract drawings. The cable trough shall be furnished within project limits. All signal, power, control and communication cables shall be installed in the cable trough in accordance with the detailed design, as approved by the engineer.
2. **Material - Construction Cover and Trough**
 - a) The cable trough shall be Plastibeton® as manufactured by Oldcastle Moulded Products, or approved equal.
 - b) Material for cable trough and cover shall be a dielectric material, High Density Polymer Concrete. Material shall conform to the Suggested Material Specifications.
 - c) The cable trough shall be totally nonporous and shall resist the degrading action of freeze/thaw cycles. The material shall also be unaffected by grease, oil, and salt.
 - d) The cover material shall be of a dielectric characteristic, non-metallic, and shall be reinforced with Sheet Moulding Compound for impact resistance. Cover shall be designed to withstand excessive loadings and not shatter under duress.
 - e) The weight of each cover shall not exceed the allowable handling weight as per OSHA requirements.
 - f) Cover shall sit inside the trench to allow flush to grade installation.
 - g) The cable trough system shall include the U-shaped channel, covers and all necessary fittings.

Model 68 – Cover	27 lb
Model 128 / 1216 – Cover	82 lb
Model 2012 / 2016 – Cover	115 lb
Model 3012 / 3016 – Cover	130 lb
Model 4016 – Cover	215 lb

- h) The cable trough shall be of the self supporting type equipped with easy access covers.
 - i) Cable trough shall have no interior permanent exposed steel components to support the cable trough sidewalls or cable trough covers. Cable trough must be able to support vehicular sidewall pressures and loads during initial installation and during the entire construction period without additional interior permanent exposed steel components.
 - j) The cable trough including the Polymer Concrete covers shall be rated to support a load of 40,000 lb without failure, H20 loading.

WON'T CRACK UNDER PRESSURE!

2 d'Inverness Avenue, Candiac
Quebec, Canada J5R 4W5

T 888.868.5214 • F 888.500.5568

Copyright © 2012



- k) Cable trough and cover shall be subjected to cycle testing to simulate vehicular traffic. Cover shall support 20,800 lb over a 10 x 10 sq. in., load applied 50 times and then final load applied anywhere on the cover until failure. Minimum failure point to be no less than 40,000 lb.
- l) The cable trough can be provided with integral dividers installed as per the end users location detail. Divider shall be manufactured utilizing Sheet Moulding Compound and be designed to support lateral loads from cables without any structural warping or deflections. Installation hardware shall be stainless bolts, round head, and countersunk to prevent any damage to cable sheathing.

3. Installing Cable Trough

- a) The cable trough shall be installed by the contractor within the excavated trench as specified, on locations shown on the contract drawings, and as specified herein.
- b) The trench shall allow for the installation of crushed stone under and on the sides of the trough in accordance with the approved manufacturer's recommendations and as approved by the Engineer.

RAILROAD APPLICATIONS

- The cable trough shall be installed with the top of the cable trough at least one inch below the bottom of all adjacent railroad ties.
- In unballasted areas that are unaffected by rail renewal programs, the cable trough shall be installed with the top of the cable trough one inch below the finished grade.
- In ballasted areas unaffected by rail replacement programs, the cable trough shall be installed as that the ballast can be tamped using heavy equipment without disturbing the cable trough. The ballast shall be so graded to allow free access to the cover of the cable trough.
- Using a transit, prepare a line grade to set the channel at a level in the excavation.
- If utilizing leveling blocks, place leveling blocks on compacted even surface, backfill around and to the height of leveling block and compact once again. Ensure that area between leveling blocks are leveled with no "hills or valleys" to guarantee a level surface.
- Set the units into place on leveling blocks. The alignment of the sections shall be made with an instrument.
- Backfill material placed on each side of the channel shall be done simultaneously. The backfill material shall be placed in four inch lifts and compacted.
- Complete tamping the earth against the channel sidewalls and finish to final grade level with proper compactable materials.
- Channel and covers must be maneuverable and can be cut on site with standard cutting equipment.
- All backfill material shall be specified in Section 2M, Excavation - No Saturated Materials, no Ice.
- Keep trench free and clear of construction debris, rocks, and earth or backfill materials. Remove foreign materials from trench prior to placing cables and covers.



BRIDGE DECK COVERS PEDESTRIAN RATED REPLACEMENT COVERS

APPLICATIONS

Replacement Covers

Plastibeton® Pedestrian Covers are utilized as replacement covers for existing deteriorating pedestrian concrete covers. Designed to fit any existing concrete trench system the Plastibeton® Covers are more durable and longer lasting than conventional concrete covers. Plastibeton® Covers can match existing covers in dimensions yet will be designed to be considerably lighter for easier handling. Plastibeton® Covers are non flammable, dielectric and are provided with a non slip finish.

Bridge Deck Covers

Plastibeton® Bridge Deck covers are designed to support pedestrian load ratings, 300 pounds per square foot. These bridge deck covers are installed on top of the cast in place trench on bridges and are used as the emergency walk way. Light weight, slip resistant, these covers can be locked into place for security purposes.

2 d'Inverness Avenue, Candiac
Quebec, Canada J5R 4W5

T 888.868.5214 • F 888.500.5568

Copyright © 2012

