

**NOTE:**

1. FOR OPTIONAL ACCESSORIES CHECK ACCESSORIES / HARDWARE SECTION.
2. HS-20 TRAFFIC RATED



2240 S. Yellowstone Hwy, Idaho Falls, Idaho 83402  
Phone: 208-522-6150 Fax: 208-522-9701

## Catch Basins

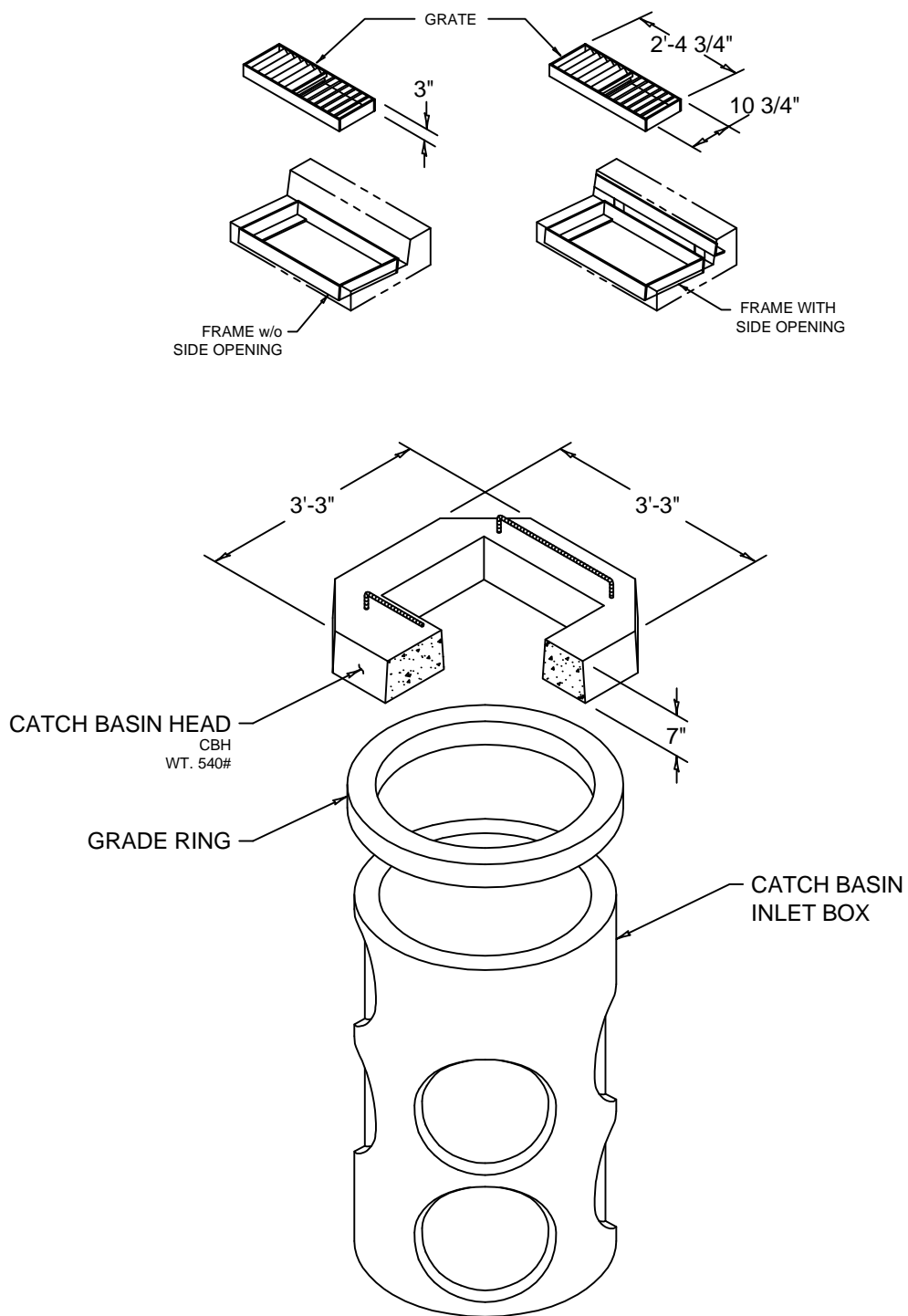
FILE NAME: 230TBCB03

ISSUE DATE: 11/2016

[www.oldcastleprecast.com](http://www.oldcastleprecast.com)

**30" Catch Basin Curb & Gutter  
ISO View  
State Frame & Grate**

Copyright © 2011



**NOTE:**

1. FOR OPTIONAL ACCESSORIES CHECK ACCESSORIES / HARDWARE SECTION.
2. 30" CATCH BASINS IS HS-20 TRAFFIC RATED



2240 S. Yellowstone Hwy, Idaho Falls, Idaho 83402  
Phone: 208-522-6150 Fax: 208-522-9701

## Catch Basins

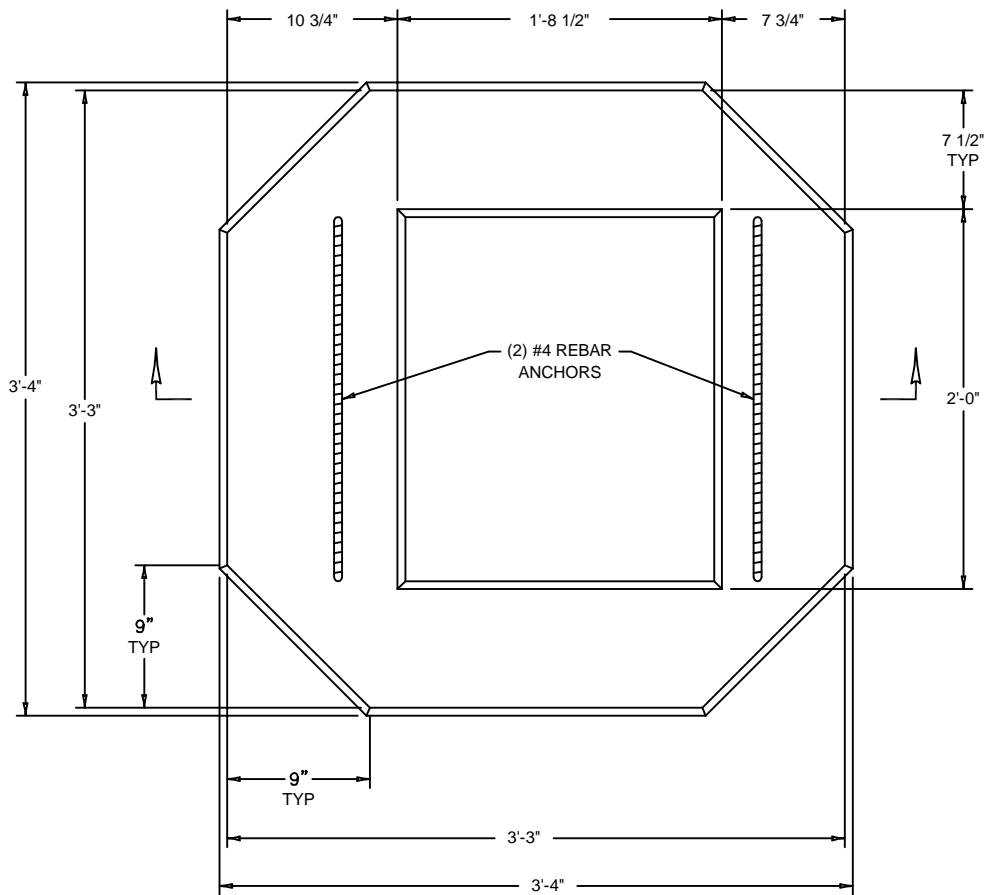
FILE NAME: 230TBCB03

ISSUE DATE: 11/2016

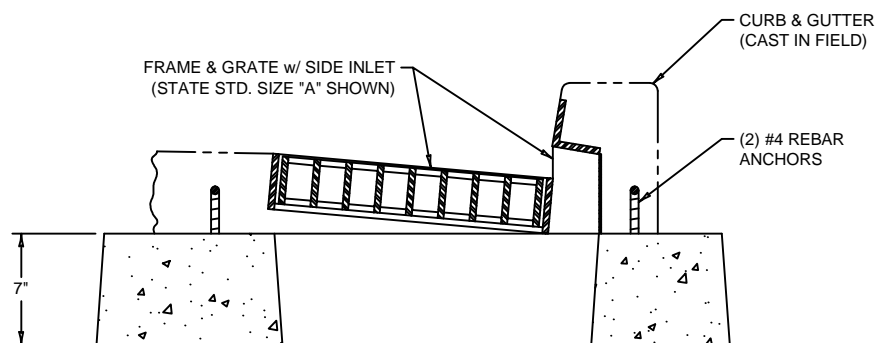
[www.oldcastleprecast.com](http://www.oldcastleprecast.com)

**30" Catch Basin Curb & Gutter  
ISO View  
City of Idaho Falls Frame & Grate**

Copyright © 2011



PLAN VIEW



SECTION VIEW



2240 S. Yellowstone Hwy, Idaho Falls, Idaho 83402  
Phone: 208-522-6150 Fax: 208-522-9701

## Catch Basins

FILE NAME: 230TBCB03

ISSUE DATE: 11/2016

[www.oldcastleprecast.com](http://www.oldcastleprecast.com)

**30" Catch Basin Curb & Gutter  
HS-20 TRAFFIC RATED**

Copyright © 2011