

NOTES:

1. VAULTS ARE DESIGNED TO MEET ASTM C858 WITH AASHTO HS-20 LOADING.
2. OPENINGS MAY BE SIZED AND LOCATED AS REQUIRED.
3. OPTIONAL ACCESSORIES MAY BE CAST IN AS REQUIRED.
4. FOR OPTIONAL ACCESSORIES CHECK ACCESSORIES / HARDWARE SECTION.
5. IT IS RECOMMENDED THAT BITUMINOUS MASTIC BE USED AT ALL JOINTS.



2240 S. Yellowstone Hwy, Idaho Falls, Idaho 83402
Phone: 208-522-6150 Fax: 208-522-9701

VAULTS

FILE NAME: 230TBUV012

ISSUE DATE: 1/2011

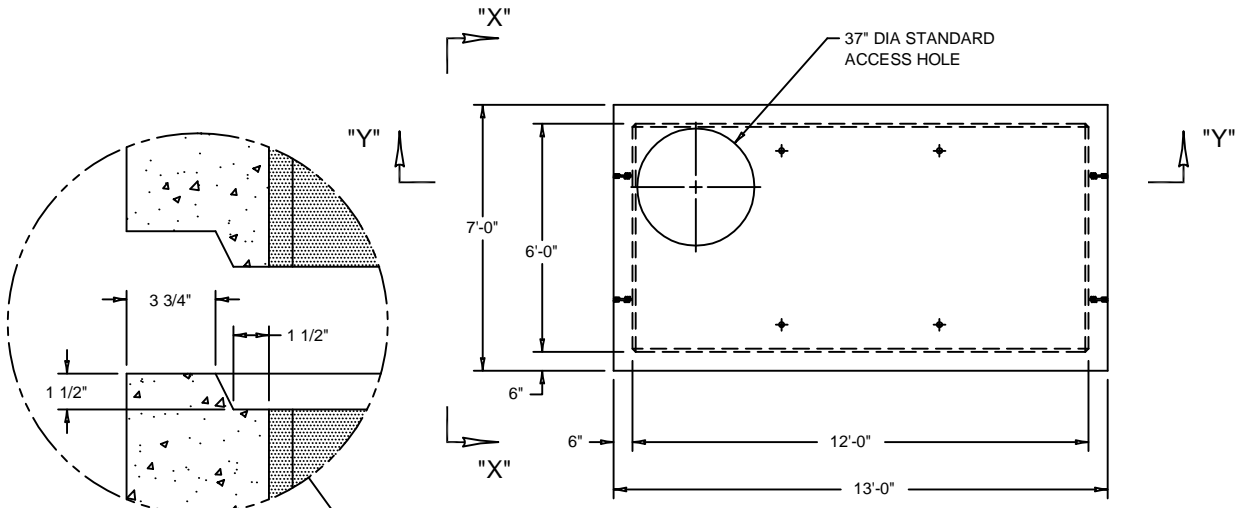
www.oldcastleprecast.com

Utility Vault

6' X 12' X 7'

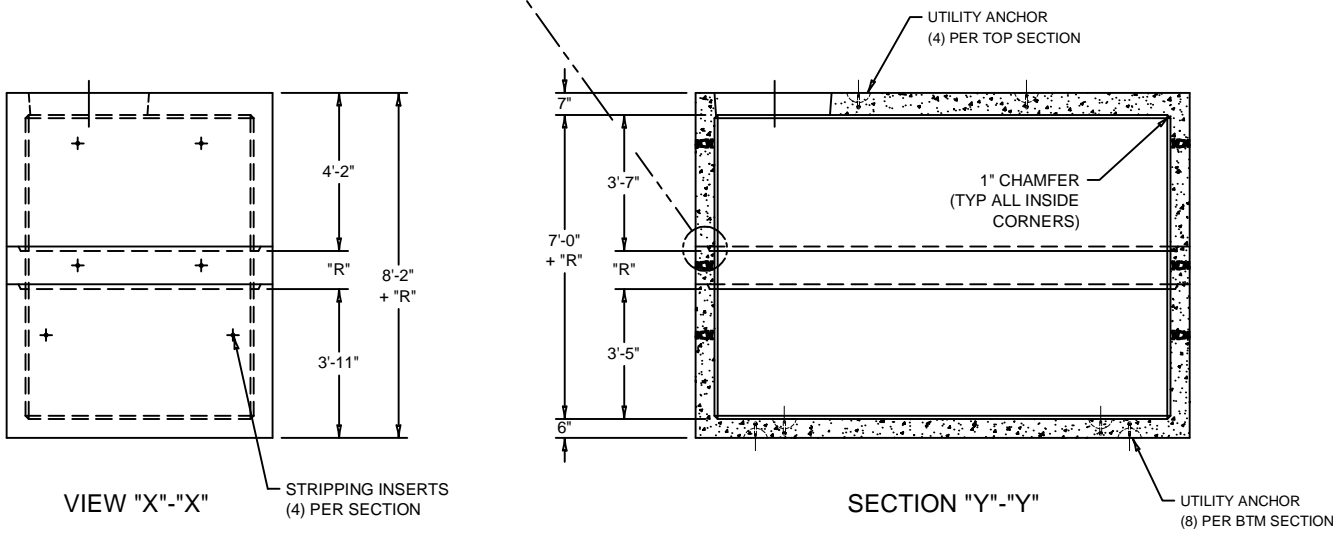
ISO View

Copyright © 2011



JOINT DETAIL
SHOWN OPEN
FOR CLARITY

PLAN VIEW



VIEW "X"- "X"

STRIPPING INSERTS
(4) PER SECTION

SECTION "Y"- "Y"

UTILITY ANCHOR
(8) PER BTM SECTION



2240 S. Yellowstone Hwy, Idaho Falls, Idaho 83402
Phone: 208-522-6150 Fax: 208-522-9701

VAULTS

FILE NAME: 230TBUV012

ISSUE DATE: 1/2011

www.oldcastleprecast.com

Utility Vault
6' X 12' X 7'

Copyright © 2011