

NOTES:

1. VAULTS ARE DESIGNED TO MEET ASTM C858 WITH AASHTO HS-20 LOADING.
2. OPENINGS MAY BE SIZED AND LOCATED AS REQUIRED.
3. OPTIONAL ACCESSORIES MAY BE CAST IN AS REQUIRED.
4. FOR OPTIONAL ACCESSORIES CHECK ACCESSORIES / HARDWARE SECTION.
5. IT IS RECOMMENDED THAT BITUMINOUS MASTIC BE USED AT ALL JOINTS.



2240 S. Yellowstone Hwy, Idaho Falls, Idaho 83402
 Phone: 208-522-6150 Fax: 208-522-9701

VAULTS

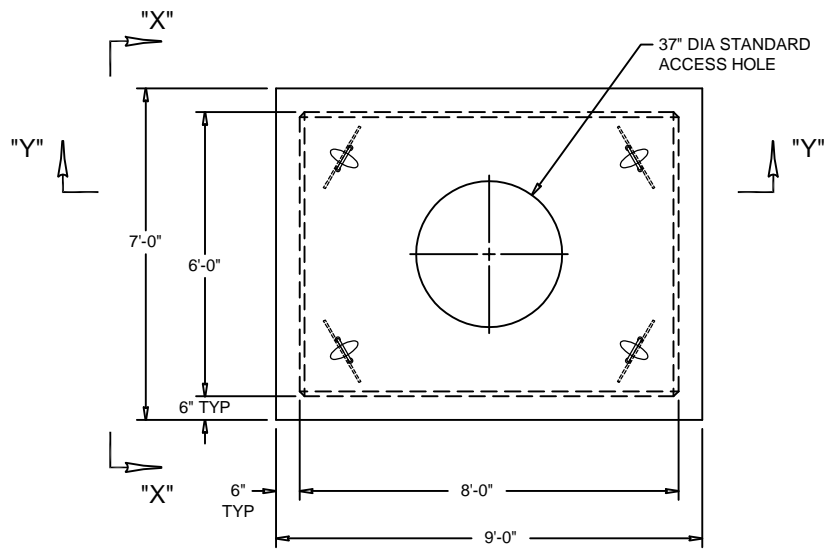
FILE NAME: 230TBUV09

ISSUE DATE: 1/2011

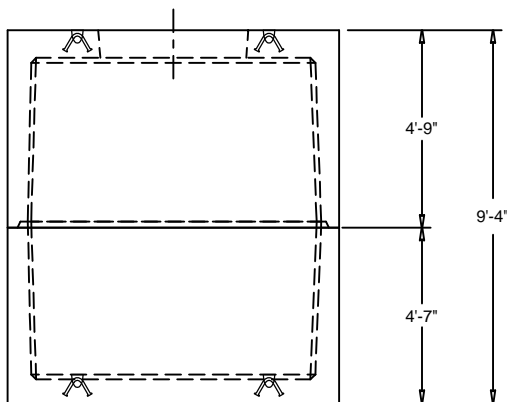
www.oldcastleprecast.com

Utility Vault
6' X 8' X 8'
ISO View

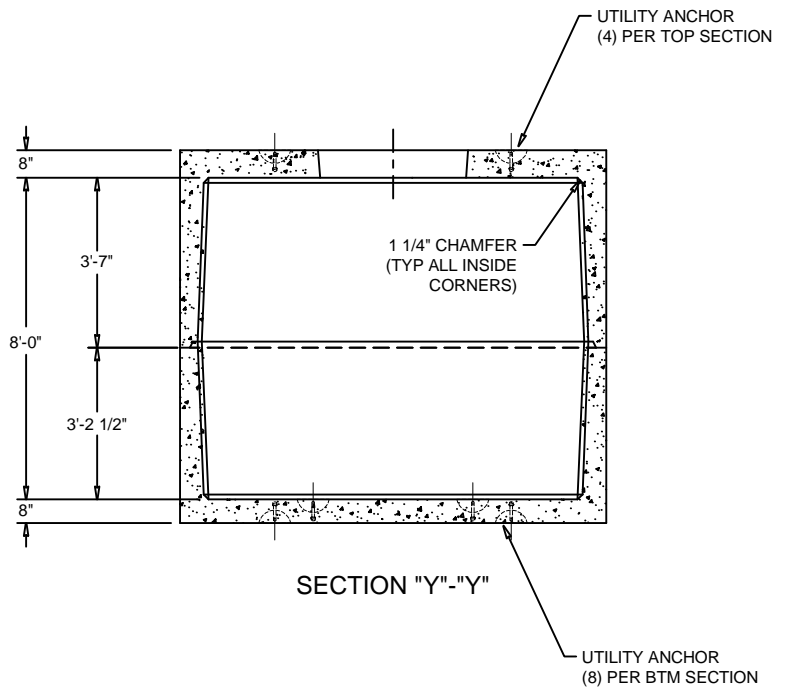
Copyright © 2011



PLAN VIEW



VIEW "X"-"X"



SECTION "Y"-"Y"



2240 S. Yellowstone Hwy, Idaho Falls, Idaho 83402
 Phone: 208-522-6150 Fax: 208-522-9701

VAULTS

FILE NAME: 230TBUV09

ISSUE DATE: 1/2011

www.oldcastleprecast.com

Utility Vault
6' X 8' X 8'

Copyright © 2011