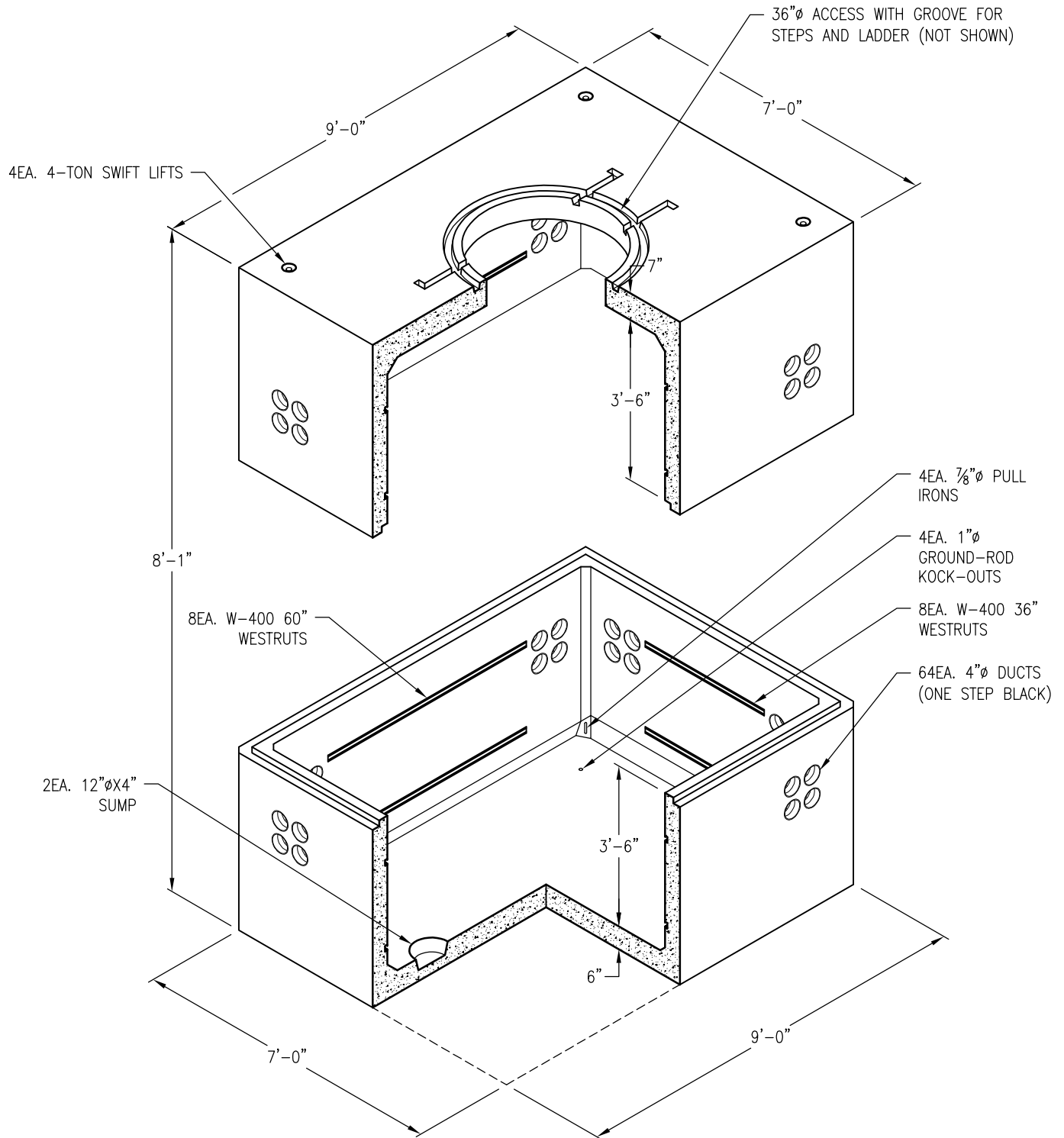


SURFACE SEALER – TWO COATS OF PENETRATING EPOXY SEALER SHALL BE APPLIED TO THE EXTERIOR. THE INTERIOR SHALL BE PAINTED WITH TWO COATS OF AN APPROVED WHITE PAINT.

RVE-6



TOP SECTION WEIGHT: 13,030 LBS.
 BASE SECTION WEIGHT: 12,850 LBS.

DRAWING MAY NOT CONFORM TO THE MOST CURRENT SPECIFICATION



Oldcastle Precast[®]

Northern California
 Madera ■ Morgan Hill ■ Pleasanton ■ Santa Rosa ■ Stockton ■ Tulare
 Phone: 925-750-6650 Fax: 925-750-6660

RVE-687
FILE NAME: RVE-6.DWG
REVISED: MARCH 2016
www.oldcastleprecast.com

6'-0" X 8'-0" X 7'-0" (I.D.)
 UTILITY VAULT
 ROSEVILLE ELECTRIC

Copyright © 2016 Oldcastle Precast, Inc.