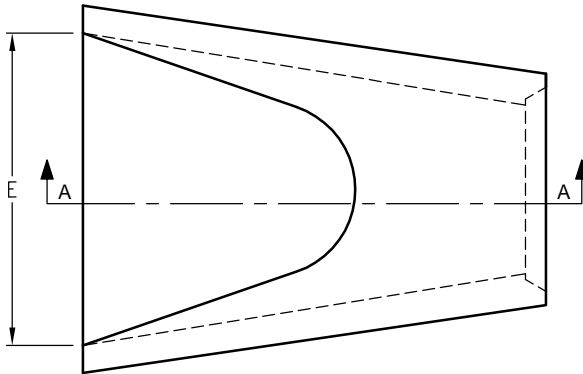


NOTES:

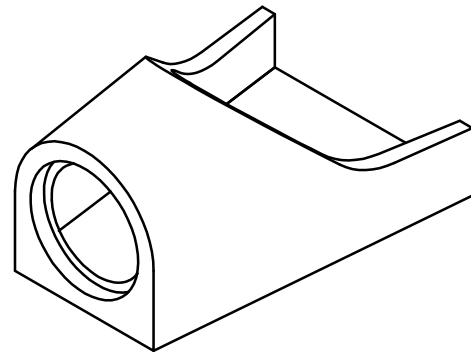
1. REINFORCEMENT SHALL BE EQUAL TO THAT REQUIRED FOR CLASS III RCP OF CORRESPONDING DIAMETER PER CALTRANS SPECIFICATIONS.

SD-35

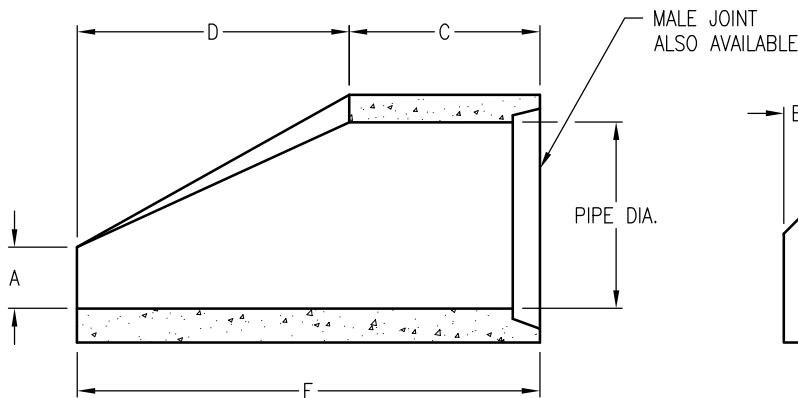
PIPE DIA.	A	B	C	D	E	F	WEIGHTS LBS.
12"	4"	2"	13"	24"	24"	37"	400
18"	9"	2½"	13"	27"	36"	40"	900
24"	9½"	3"	16"	42"	48"	56"	1,400
30"	12"	3½"	18"	54"	60"	72"	2,300
36"	15"	4"	18"	63"	72"	81"	4,100
42"	21"	5"	18"	63"	78"	81"	5,200
48"	24"	5"	18"	72"	84"	90"	6,500
54"	27"	6"	18"	65"	90"	83"	7,400



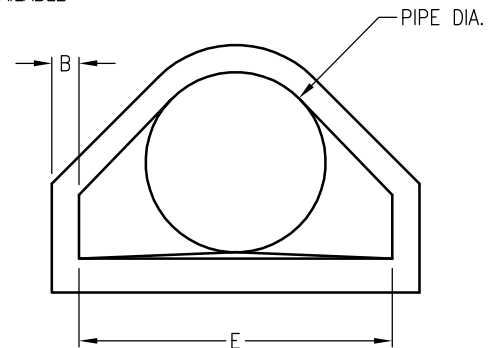
PLAN VIEW



ISOMETRIC VIEW



SECTION A-A



END VIEW

DRAWING MAY NOT CONFORM TO THE MOST CURRENT SPECIFICATION