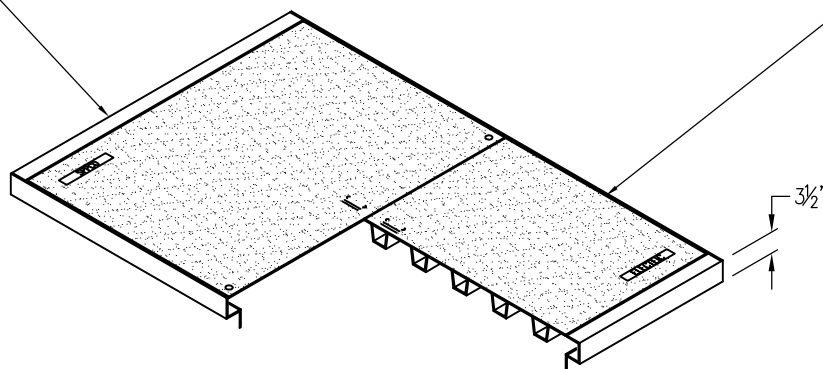


4'-0" X 6'-6" (NOMINAL)
GALVANIZED, ADJUSTABLE, SPRING
ASSIST, H-10 RATED FRAME AND
COVER. NAME PLATES MARKED:
"SPPCo" & "ELECTRIC"

LID A 24-1167 H-10
RATED
LID C 24-1166
NON-TRAFFIC RATED



4EA. 7/8" ϕ LIFTING
INSERTS
DIAMOND PLATE
WITH GRAY PAINT

36" ϕ D&L B-5520 CAST IRON
FRAME AND COVER, MARKED:
"SPPCo" & "ELECTRIC"

8EA. 72" LONG W-400
WESTRUTS

STEEL FRAME WITH
EXPOSED #5 REBAR
LID B 24-1295

6" RISER 24-0050

18" RISER 24-0466

12EA. 7/8" ϕ LIFTING INSERTS

18" LOWER RISER 24-1042

8"
6"
4'-2"
1'-6"
1'-6"

3'-6"

7'-5"

4'-11"

8EA. 6" X 12"
KNOCK-OUTS

6" RISER WEIGHT: 800 LBS.
1EA. 18" RISER WEIGHT: 2,400 LBS.

DRAWING MAY NOT CONFORM TO THE
MOST CURRENT SPECIFICATION



Oldcastle Precast[®]
Northern California
Madera ■ Morgan Hill ■ Pleasanton ■ Santa Rosa ■ Stockton ■ Tulare
Phone: 925-750-6650 Fax: 925-750-6660

SPPCo-573
FILE NAME: SPPC-3.DWG
REVISED: MARCH 2016
www.oldcastleprecast.com

4'-0" X 6'-6" X 3'-6" (I.D.)
UTILITY VAULT
SIERRA PACIFIC