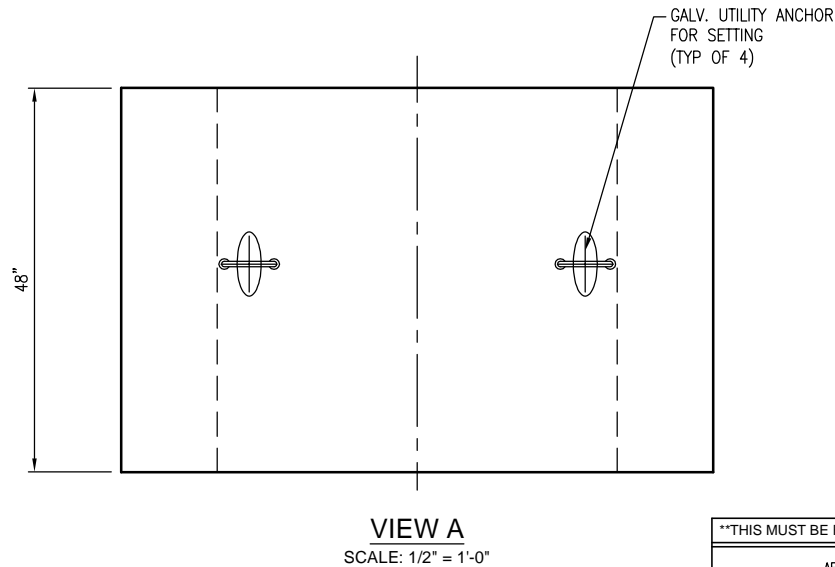
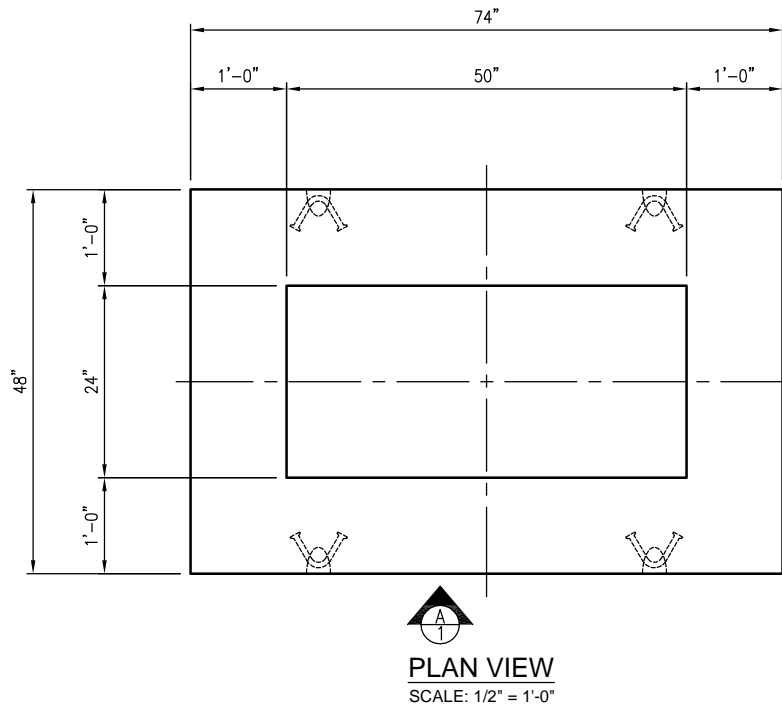


GENERAL DESIGN NOTES

1. CONCRETE: 28 DAY COMPRESSIVE STRENGTH $F'_c = 5,000$ PSI (MIN).
2. REINFORCING: ASTM A-615, GRADE 60.
3. PAD DESIGNED FOR STANDARD DUKE ENERGY SECONDARY BUS CABINET.
4. PAD SHALL BE SUPPORTED IN ACCORDANCE WITH PROJECT SPECIFICATIONS (I.E. LEVEL AND COMPACTED BEARING SURFACE).



WEIGHT		
SECTION	WEIGHT (lbs)	Concrete(CY)
PAD	9,800	2.42



THIS DOCUMENT IS THE PROPERTY OF OLDCASTLE PRECAST, INC. IT IS CONFIDENTIAL, SUBMITTED FOR REFERENCE PURPOSES ONLY, AND SHALL NOT BE USED IN ANY WAY INJURIOUS TO THE INTERESTS OF, OR WITHOUT THE WRITTEN PERMISSION OF OLDCASTLE PRECAST, INC. COPYRIGHT © 2015 OLDCASTLE PRECAST, INC ALL RIGHTS RESERVED



48"X74"X48" OD SECONDARY BUS PAD
SUBMITTAL LAYOUT

CUSTOMER					
DUKE ENERGY					
DATE	SALES	DRAWN	ENGINEER	CHECKED	SALES ORDER
9/21/15	RS	LD	EMT		
DRAWING NUMBER				REVISION	SHEET
Secondary Bus-Pad 48x74x48					1 OF 2
REV DATE					

REVISIONS					
REV	DATE	BY	SHEET	DESCRIPTION OF REVISION	REQUESTED BY
A					
B					

THIS MUST BE FILLED OUT BEFORE MANUFACTURING BEGINS

APPROVED W/ NO EXCEPTIONS TAKEN:

APPROVED AS NOTED:

REVISED AND RESUBMIT:

SIGNATURE _____

DATE _____