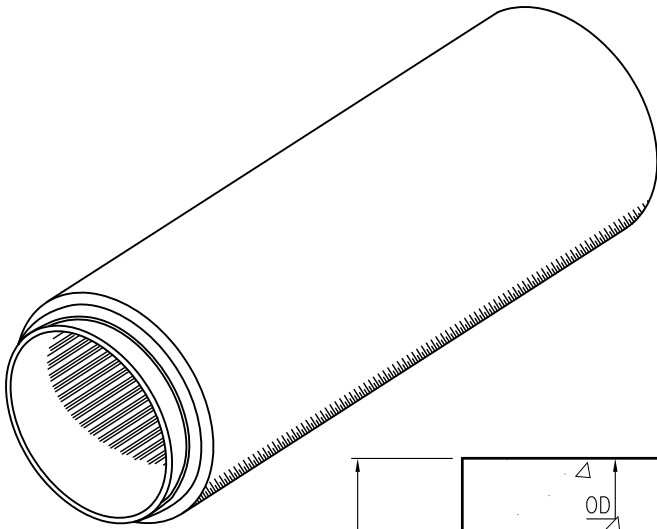


PIPE DIMENSIONS & WEIGHTS

ID	WT	JT	GD	RD	RT	OD	WEIGHT (lbs/ft)	PLANT	AVAIL LENGTH
42"	C-5 1/4"	4 5/16"	46.883"	46.170"	2 1/2"	52 1/2"	813	RAL	8'
48"	C-5 3/4"	4 5/16"	52.883"	52.170"	2 1/2"	59 1/2"	1013	RAL	8'
54"	C-6 1/4"	4 5/16"	58.592"	57.879"	2 1/2"	66 1/2"	1225	RAL	8'
60"	C-6 3/4"	4 13/16"	65.092"	64.379"	2 1/2"	73 1/2"	1463	RAL	8'
66"	C-7 1/4"	5"	71.596"	70.705"	2 1/2"	80 1/2"	1738	FUQ	8'
72"	B-7"	5"	77.875"	76.982"	2 1/2"	86"	1800	FUQ	8'
84"	B-8"	5"	90.970"	90.162"	2 3/4"	100"	2375	FUQ	6'

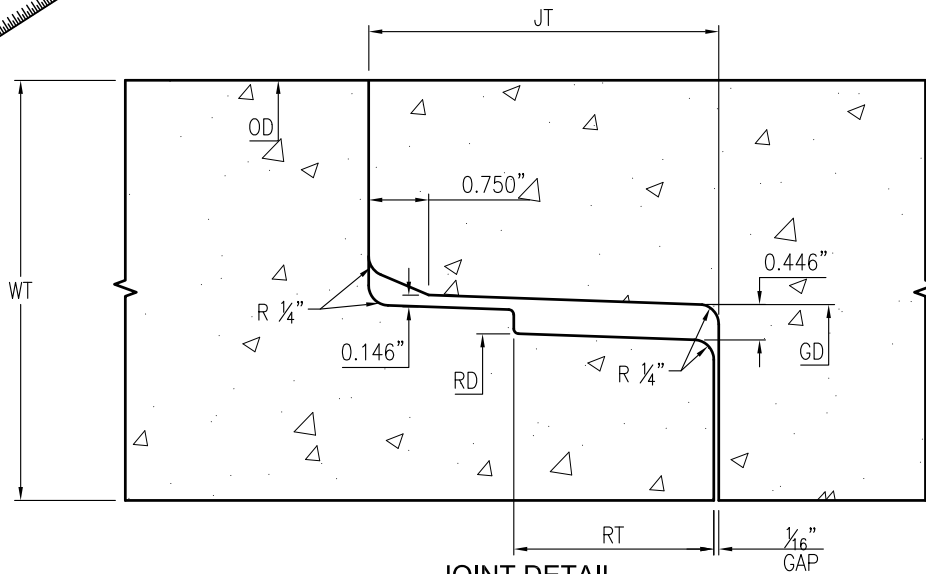


PIPE DESIGN SPECIFICATIONS:

1. ASTM C 76-LATEST CLASS III, IV, & V
2. AASHTO M-170-LATEST
3. MEETS ALL NCDOT SPECS

JOINT DESIGN SPECIFICATIONS:

1. ASTM C-443-LATEST (GASKET) OR
ASTM C-990- LATEST (CONSEAL CS-102)



JOINT DETAIL
SCALE: NTS



TO ORDER PLEASE SPECIFY

SIZE	CLASS	JOINT TYPE	JOINT SEALANT	LENGTH
		SO		
		SO		
		SO		

SIZE :
INSIDE DIA. (INCH)

CLASS :
C3, C4, C5

JOINT TYPE :
TG= TONGUE & GROOVE
SO= SINGLE OFFSET
OR= O-RING

JOINT SEALANT:
M= MORTAR
C= CONSEAL CS-102
S= SINGLE OFFSET GASKET
O= O-RING GASKET

LENGTH:
PER TABLE



Oldcastle Precast[®]
920 WITHERS ROAD RALEIGH, NC. 27603
OFFICE 919-772-6301, FAX 919-772-1209
NC ENGINEERING
LICENSE #F-1002

THIS DOCUMENT IS THE PROPERTY OF OLDCASTLE PRECAST, INC. IT IS CONFIDENTIAL, SUBMITTED FOR REFERENCE PURPOSES ONLY, AND SHALL NOT BE USED IN ANY WAY INJURIOUS TO THE INTERESTS OF, OR WITHOUT THE WRITTEN PERMISSION OF OLDCASTLE PRECAST, INC. COPYRIGHT © 2017 OLDCASTLE PRECAST, INC. ALL RIGHTS RESERVED.

SINGLE OFFSET STRAIGHT WALL PIPE SUBMITTAL

CUSTOMER

DATE	SALES	DRAWN	ENGINEER	CHECKED	SALES ORDER
10/9/17		PPS			
DRAWING NUMBER				REVISION	SHEET
Single Offset Straight Wall Pipe				REV DATE	1 OF 1