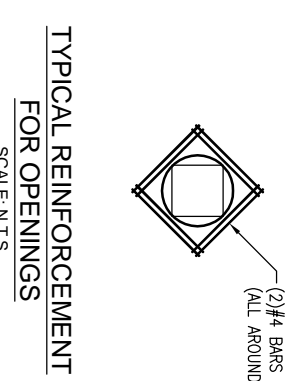
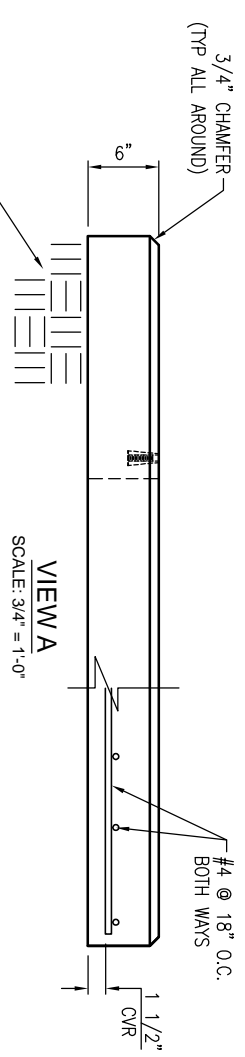


PLAN VIEW
SCALE: 3/4" = 1'-0"



- PLACE PAD ON BED OF CLEAN GRAVEL (SEE NOTE #5)
1. USE EXACT BAR SIZE AND SPACING AS NOTED ABOVE.
 2. ALL STEEL CUT OUT FOR OPENINGS WILL BE REPLACED, HALF REINFORCEMENT ON EACH SIDE OF OPENING. INCLUDE (2) ADDITIONAL #4 DIAGONAL BARS AROUND OPENING (SEE TYPICAL REINFORCEMENT FOR ALL OPENINGS)

GENERAL NOTES:

1. CONCRETE: 28 DAY COMPRESSIVE STRENGTH $f'_c = 4,000$ PSI (MIN).
2. REINFORCING: ASTM A-615, GRADE 60.
3. SLAB DESIGNED FOR EITHER THE FDH3000 288 PFP (SMALL) [89 LBS] OR 432 PFP (MEDIUM) [105 LBS] CABINETS LOAD ONLY.
4. SLAB DESIGNED FOR 150 MPH WIND LOAD, IN ACCORDANCE WITH ASCE 7-10, EXPOSURE CATEGORY C, RISK CATEGORY 2.
5. SLAB SHALL BE SUPPORTED IN ACCORDANCE WITH AT&T PROJECT SPECIFICATIONS (I.E. LEVEL AND COMPACTED BEARING SURFACE).

REVISIONS

REVISION	DATE	BY	SHEET	DESCRIPTION OF REVISION	REQUESTED BY
A			1		CONTRACTOR
B					

SECTION	WEIGHT (lb)	COMPRESSION
TOTAL	1,300	0.32



THIS DOCUMENT IS THE PROPERTY OF OLDCASTLE PRECAST, INC. IT IS CONFIDENTIAL. SUBMITTED FOR REFERENCE PURPOSES ONLY, AND SHALL NOT BE USED IN ANY MANNER WITHOUT THE WRITTEN PERMISSION OF OLDCASTLE PRECAST, INC. COPYRIGHT © 2014 OLDCASTLE PRECAST, INC. ALL RIGHTS RESERVED.

41X5X6" OD FDH3000 CABINET PAD

SUBMITTAL LAYOUT

288 PFP (SMALL) OR 432 PFP (MEDIUM)

CUSTOMER: **AT & T (PIN# ATT.100087881)**

DATE	SALES	DRAWN	ENGINEER	CHECKED	REVISION	SALES ORDER
6/24/14						

DRAWING NUMBER: **Sm-Med-FDH 3000 Pad**

REV/DATE	1 OF 1