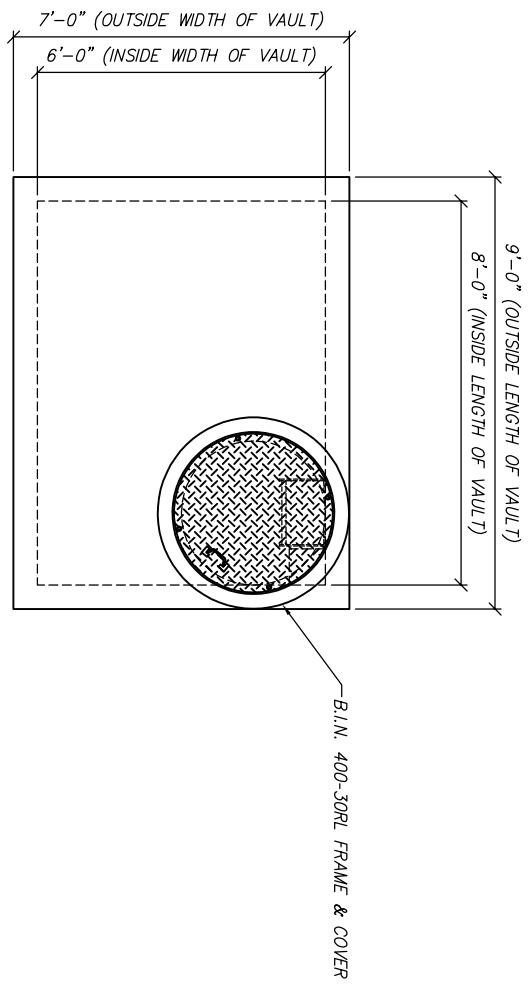
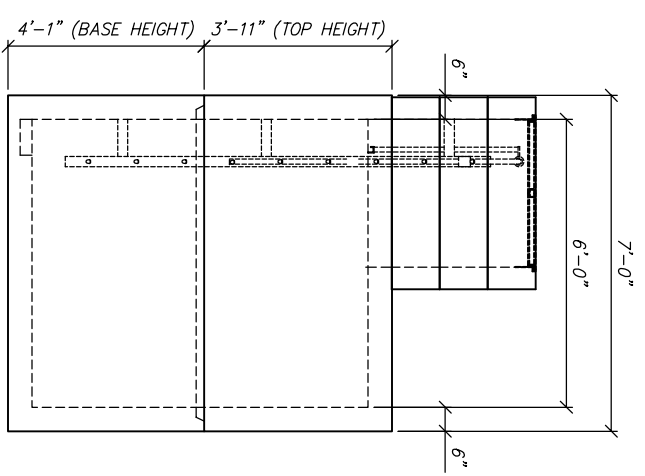


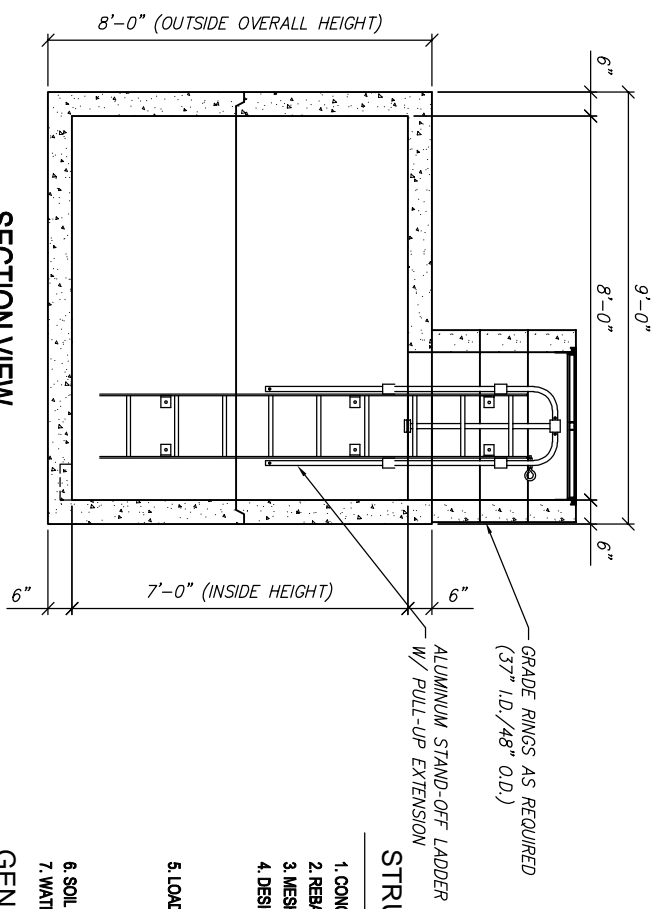
| REV | DESCRIPTION | BY | DATE |
|-----|-------------|----|---------|
| A | NOS UPDATES | CP | 7/31/17 |



PLAN VIEW
SCALE: 1/4" = 1'-0"



END VIEW
SCALE: 1/4" = 1'-0"



SECTION VIEW
SCALE: 1/4" = 1'-0"

STRUCTURAL NOTES

1. CONCRETE: 28 DAY COMPRESSIVE STRENGTH $f_c = 5,000$ psi
2. REBAR: ASTM A-615 GRADE 60
3. MESH: ASTM A-1094 GRADE 65
4. DESIGN: ACI 318-14 BUILDING CODE
ASTM C-867 MINIMUM STRUCTURAL DESIGN
LOADING FOR UNDERGROUND PRECAST
CONCRETE UTILITY STRUCTURES*
5. LOADS: HS20.44 W/30% IMPACT PER AASHTO
80 PSF LATERAL LIVE LOAD SURCHARGE - UP TO 8'-0" DEPTH
SOIL, 40 PCF LATERAL SOIL PRESSURE ABOVE WATER TABLE
80 PCF LATERAL SOIL PRESSURE BELOW WATER TABLE
120 PCF SOIL DENSITY
6. SOIL COVER: 0" TO 5" (MAX.)
7. WATER TABLE: 5'-0" BELOW GRADE

GENERAL NOTES

1. ALL JOINTS SHALL BE SEALED USING CONSEAL CS-101 BUTYL RUBBER ROPE.
2. WELDING FOR TANK ANCHORING SHALL ONLY BE DONE BY A CERTIFIED WELDER AND SHALL BE IN ACCORDANCE WITH AWS AND AISC SPECIFICATIONS. ELECTRODES PER AWS.



411 E. FRIE RD. OWANUM, AZ 85226
PHONE: (480) 988-8218

THIS DOCUMENT IS THE PROPERTY OF OLDCASTLE PRECAST, INC. IT IS CONFIDENTIAL, SUBMITTED FOR REFERENCE PURPOSES ONLY, AND SHALL NOT BE USED IN ANY MANNER WITHOUT THE WRITTEN PERMISSION OF OLDCASTLE PRECAST, INC. COPYRIGHT 2017 OLDCASTLE PRECAST, INC. ALL RIGHTS RESERVED.

687 PRECAST OLDCASTLE FUEL VAULT

ASSEMBLY DRAWING
UNDERWRITERS LABORATORIES

CUSTOMER
STANDARD

| DATE | SALES | DRAWN | ENGINEER | CHECKED | SALES ORDER |
|----------|----------|----------|----------|----------|-------------|
| 8/28/97 | EG | EG | | | |
| REVISION | REVISION | REVISION | REVISION | REVISION | REVISION |
| 1 | 1 | 1 | 1 | 1 | 1 |