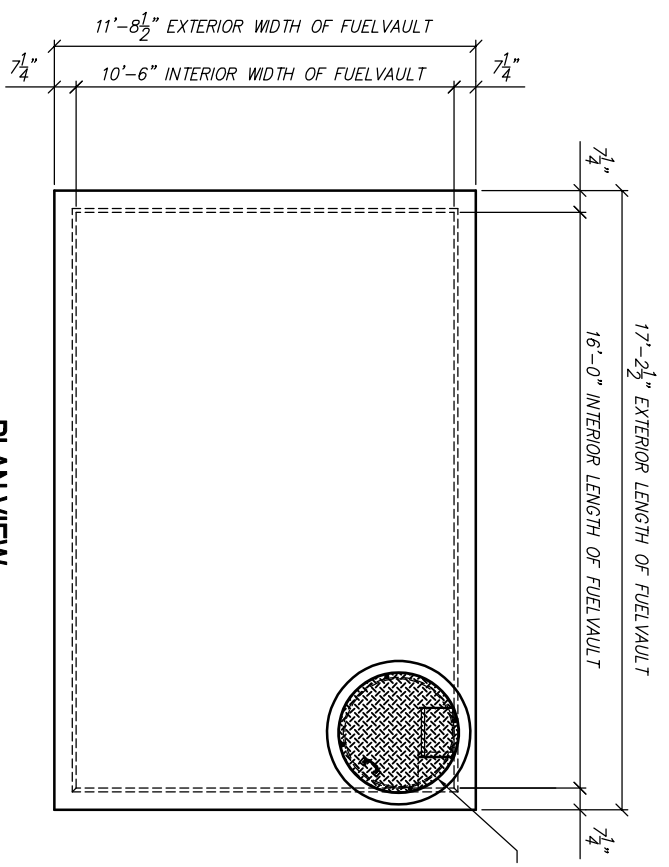
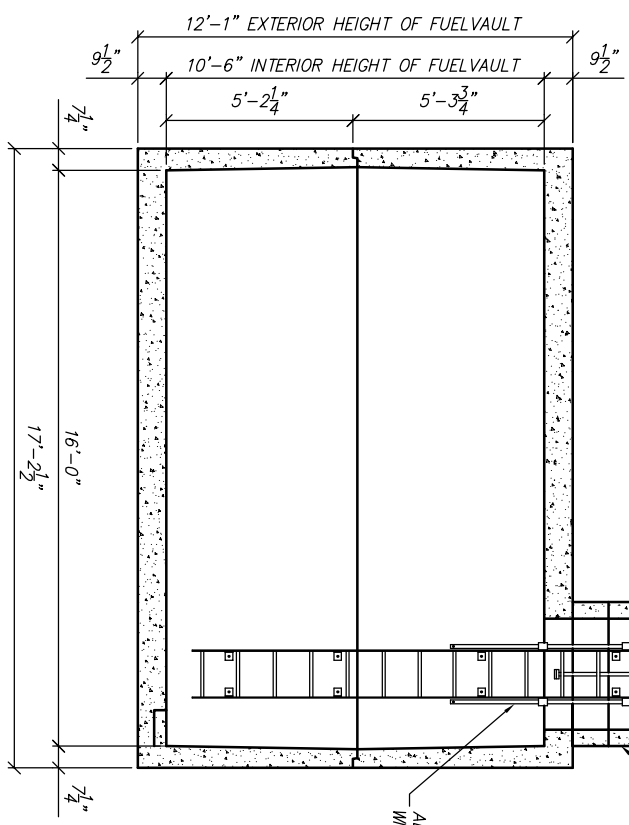


| REV | DESCRIPTION | BY | DATE |
|-----|-------------|----|---------|
| A | NOS UPDATES | CP | 7/31/17 |



PLAN VIEW
SCALE: 3/16" = 1'-0"



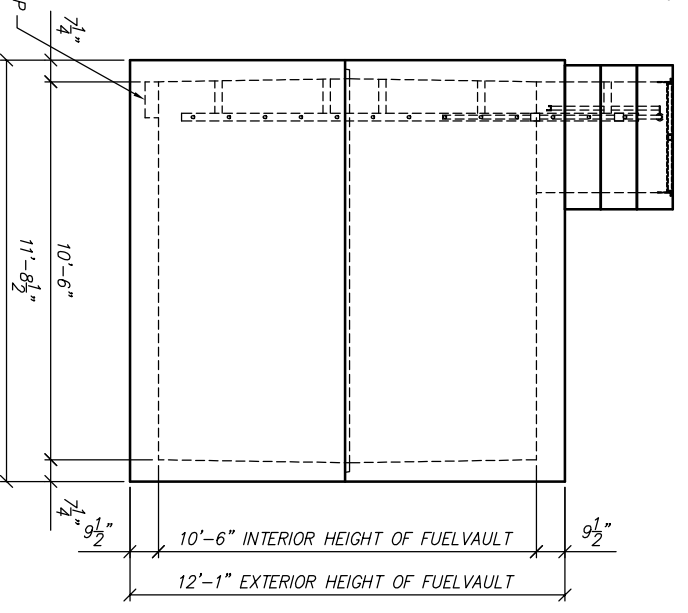
SECTION VIEW
SCALE: 3/16" = 1'-0"

GRADE RINGS AS REQUIRED
(37" I.D. / 48" O.D.)

12" X 12" X 4 1/2" DEEP SWMP

ALUMINUM STAND-OFF LADDER
WITH PULL-UP EXTENSION

B.I.N. 400-36RL FRAME AND COVER



END VIEW
SCALE: 3/16" = 1'-0"

STRUCTURAL NOTES

1. CONCRETE: 28 DAY COMPRESSIVE STRENGTH $f_c = 5,000$ psi
2. REBAR: ASTM A-615 GRADE 60
3. MESH: ASTM A-1064 GRADE 65
4. DESIGN: ACI 318-14 BUILDING CODE
ASTM C-487 "MINIMUM STRUCTURAL DESIGN
LOADING FOR UNDERGROUND PRECAST
CONCRETE UTILITY STRUCTURES"
5. LOADS: HS20-44 W/30% IMPACT PER AASHTO

GENERAL NOTES

1. ALL JOINTS SHALL BE SEALED USING CONSUAL CS-101 BUTYL RUBBER ROPE.
2. ADDITIONAL VAULT PENETRATIONS AVAILABLE PER CUSTOMER REQUIREMENTS.

411 E. FRENCH CANYON BLVD. #28202
PHOENIX, AZ 85026
PHONE: (480) 988-8200

THIS DOCUMENT IS THE PROPERTY OF OLDCASTLE PRECAST, INC. IT IS CONSIDERED LOANED TO THE INTERESTS OF OUR CLIENTS AND SHALL NOT BE USED IN ANY MANNER WITHOUT THE WRITTEN PERMISSION OF OLDCASTLE PRECAST, INC. COPYRIGHT ©2017 OLDCASTLE PRECAST, INC. ALL RIGHTS RESERVED.

10116 PRECAST OLDCASTLE FUELVAULT

ASSEMBLY DRAWING
UNDERWRITERS LABORATORIES

STANDARD

| DATE | SALES | DRAWN | ENGINEER | CHECKED | SALES ORDER |
|----------|-----------|-------|----------|---------|-------------|
| 3/26/09 | JMI | JMI | | | |
| REVISION | REV. DATE | 1 | OF | 1 | 1 |