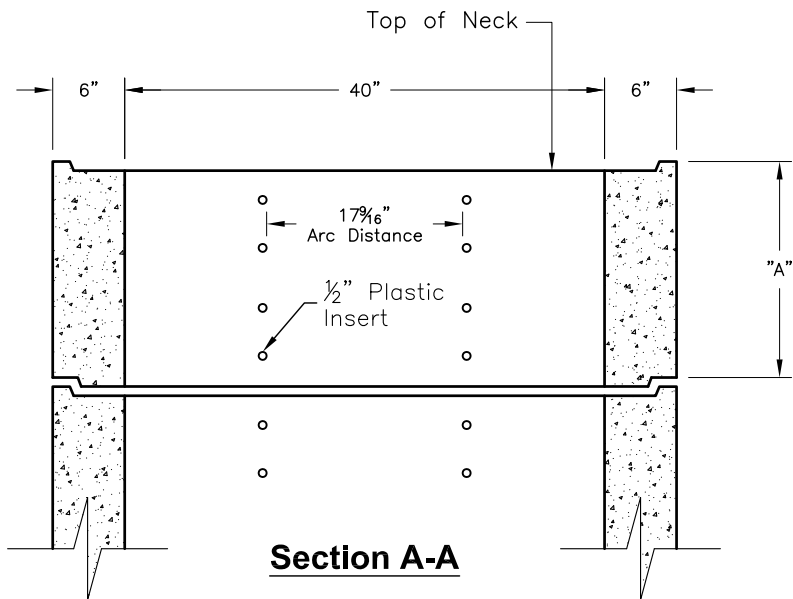
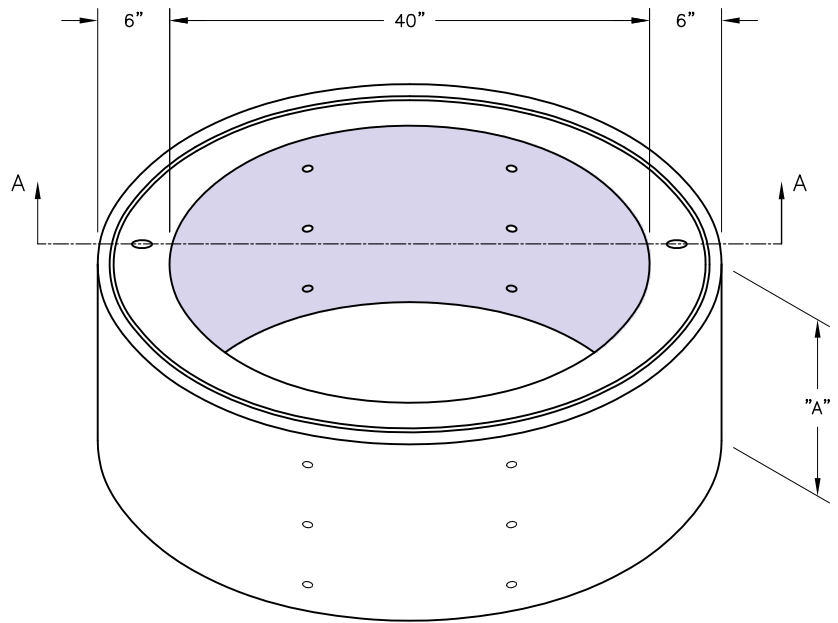


**40" Dia. Neck**  
 Weight – See Table

Neck Data	
"A"	Weight
3	250
9	680
18	1355
27	2020
36	2680
40	3020


**SPECIFICATIONS:**

1. Concrete: Design Strength of 5500 PSI at 28 Days.
2. Steel Reinforcement: ASTM A-185.
3. Loading: Designed for HS-20 Loading.

SCALE: N.T.S.