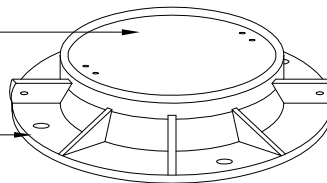


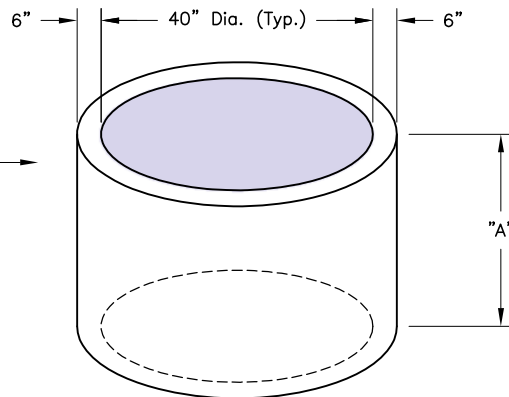
E1810-A2 Cover
 (Marked "Communication")
 Weight - 305 Lbs.

E1825 Ring
 Weight - 430 Lbs.

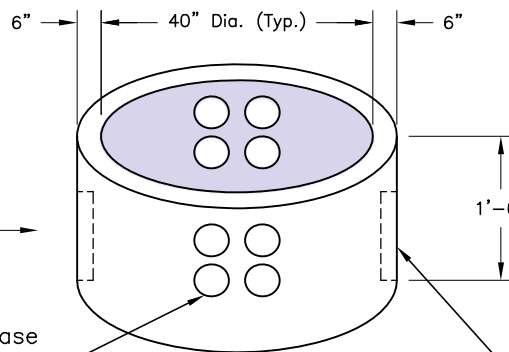


NECK EXTENSION
 As Required
 Weight - See Chart

NECK DATA		
"A"	Weight	Style
3	243	WETCAST
9	689	WETCAST
18	1337	WETCAST
27	2025	WETCAST
36	2714	WETCAST



Fiber Optic Body
 Weight - 1200 Lbs.

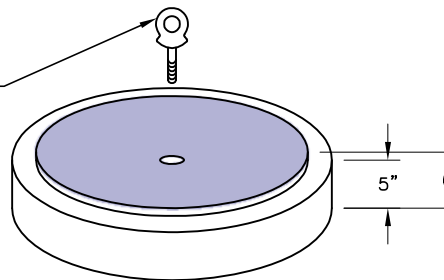


(4) - 4" Dual Phase Terminators at top of Body

10" W. x 12" H. Knock-Out at Bottom of Body (2 Typ.)

Removable 1" Pull Eye

Fiber Optic Base
 Weight - 1075 Lbs.



SPECIFICATIONS:

1. Concrete: Design Strength of 5500 PSI at 28 Days.
2. Steel Reinforcement: ASTM A-185.
3. Loading: Designed for HS-20 Loading.
4. C.I. Castings: ASTM A 48 Class 30/35