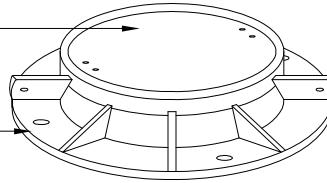


E1810-A2 Cover
 (Marked "Communication")
 Weight - 305 Lbs.

E1825 Ring
 Weight - 430 Lbs.



Fiber Optic Body
 Weight - 1200 Lbs.

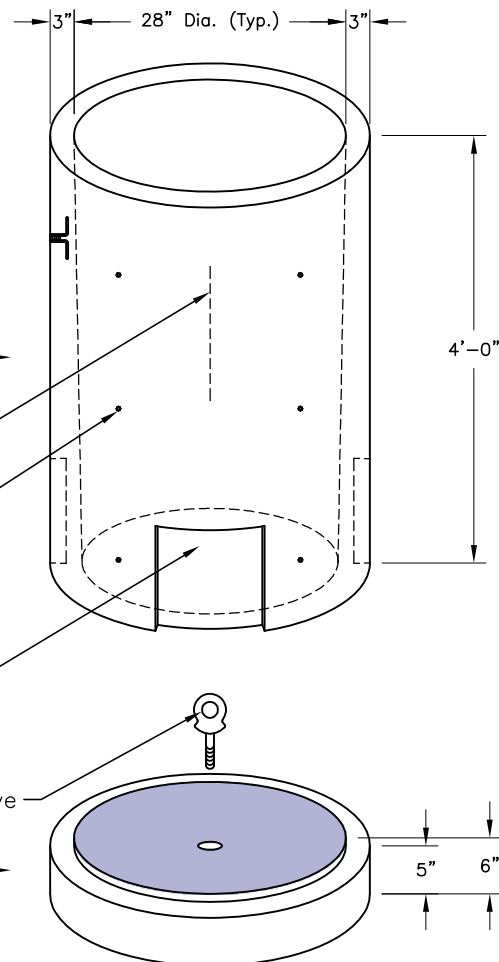
1/2"Ø GROUND ROD INSERT

1/2"Ø PLASTIC INSERTS

12"x12"x2" KNOCKOUT

Pull Eye

Fiber Optic Base
 Weight - 1075 Lbs.



SPECIFICATIONS:

1. Concrete: Design Strength of 5500 PSI at 28 Days.
2. Steel Reinforcement: ASTM A-185.
3. Loading: Designed for HS-20 Loading.
4. C.I. Castings: ASTM A 48 Class 30/35