

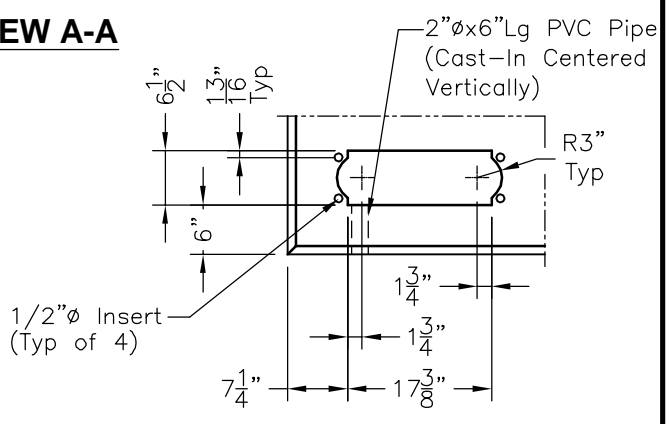
PLAN VIEW
Wt: 3,700 Lbs.



ELEVATION VIEW A-A

NOTES:

1. Concrete: 28 Day Compressive Strength $f_c = 5,500$ psi.
2. Reinforcing: ASTM A-615, Grade 60.
3. Slab Designed for 3,000 Lb. Dead Load.
4. Slab Shall be Supported by a 3" Min. Layer of Level Compacted Crushed Stone or Sand Bed.



DETAIL VIEW B

SCALE: 1/2" = 1'-0"



52-B-PWR

68" x 108" x 6"
Lucent DLC Cabinet Pad
With Power Box

13600 S. Wayside Dr., Houston, Texas 77048
Phone: 713-991-2400 Fax: 713-991-0815

FILE NAME: 264UTP52BPWR.DWG
ISSUE DATE: JANUARY, 2007
www.oldcastlehouston.com

Copyright © 2007 Oldcastle Precast, Inc.