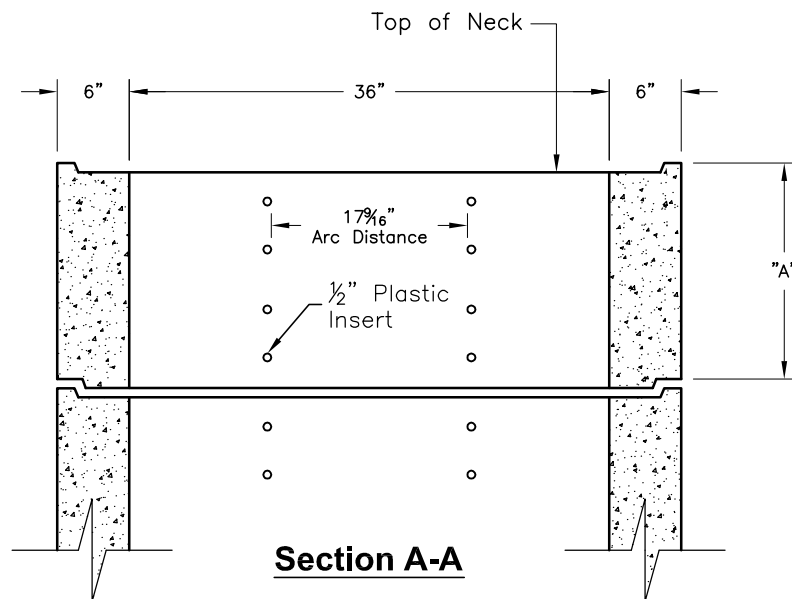

**36" Dia. Neck**

Weight - See Table

Neck Data	
"A"	Weight
6	410
9	610
12	820
15	1020
18	1205
24	1690
36	2500


**SPECIFICATIONS:**

1. Concrete: Design Strength of 5500 PSI at 28 Days.
2. Steel Reinforcement: ASTM A-185.
3. Loading: Designed for HS-20 Loading.

SCALE: N.T.S.