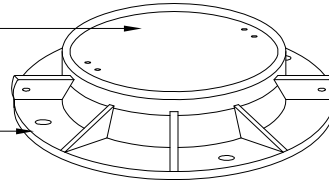


**E1810-A2 Cover**  
 (Marked "Communication")  
 Weight - 305 Lbs.

**E1825 Ring**  
 Weight - 430 Lbs.



**Fiber Optic Body**  
 Weight - 1200 Lbs.

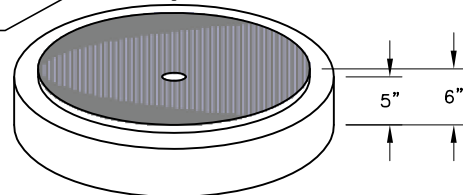
1/2"Ø GROUND ROD INSERT

1/2"Ø PLASTIC INSERTS

12"x12"x2" KNOCKOUT



**Fiber Optic Base**  
 Weight - 1075 Lbs.



**SPECIFICATIONS:**

1. Concrete: Design Strength of 5500 PSI at 28 Days.
2. Steel Reinforcement: ASTM A-185.
3. Loading: Designed for HS-20 Loading.
4. C.I. Castings: ASTM A 48 Class 30/35