
GENERAL NOTES:

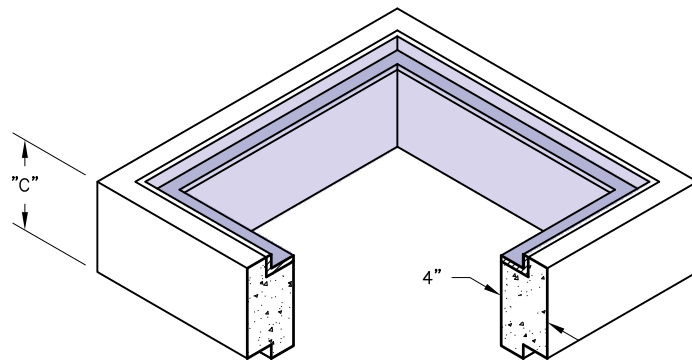
1. Different Height of Extensions and Bodies are Available by Request.
2. Frames may be Cast in Extension or Body. Frames are Cast Iron or Steel.

C.I. Grate

Weight — 100 Lbs.
Item# — 7105000

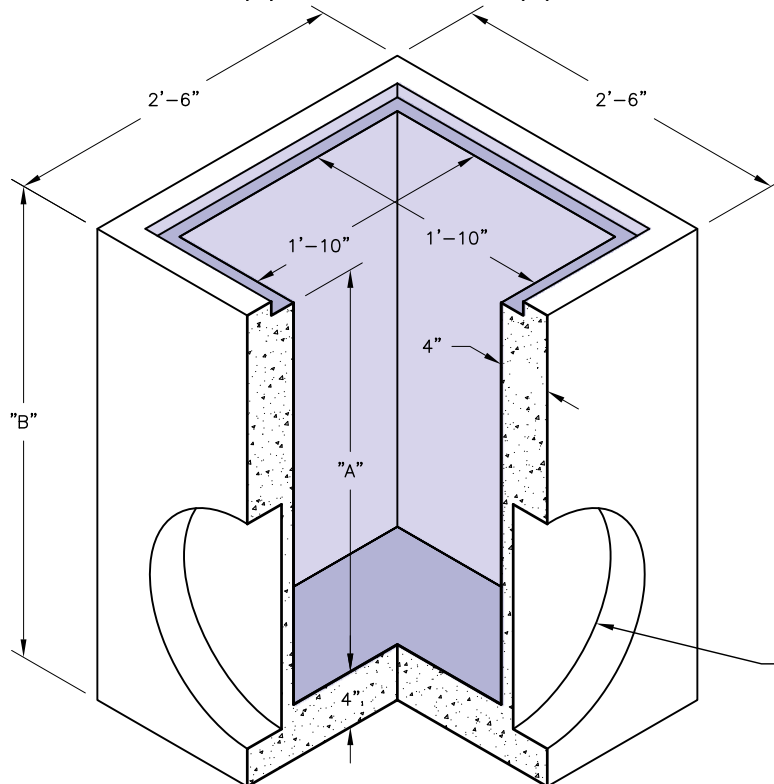
SPECIFICATIONS:

1. Concrete has a design strength of 5000 PSI at 28 days.
2. Steel reinforcement: ASTM A-615 Grade 60 or ASTM A-497 Welded wire fabric.
3. Loading: Designed for H20 Loading.
4. C.I. Castings: ASTM A-48, Class 30/35.


Extension w/ Frame

Weight — See Table
Item# — See Table

Extension w/ Frame		
C	Weight	Item#
6"	225 Lbs.	1201080
12"	425 Lbs.	1201140



Body w/ Frame			
A	B	Weight	Item#
12"	16"	750 Lbs.	1201120
24"	28"	1175 Lbs.	1201160
30"	34"	1400 Lbs.	1201180
36"	40"	1600 Lbs.	1201200
42"	46"	1825 Lbs.	1201220
48"	52"	2050 Lbs.	1201260

Body

Weight — See Table
Item# — See Table

20"Ø Standard
Knockout (Typ)