

**GENERAL NOTES:**

1. Different Height of Bodies are Available by Request.

**C.I. Grate**

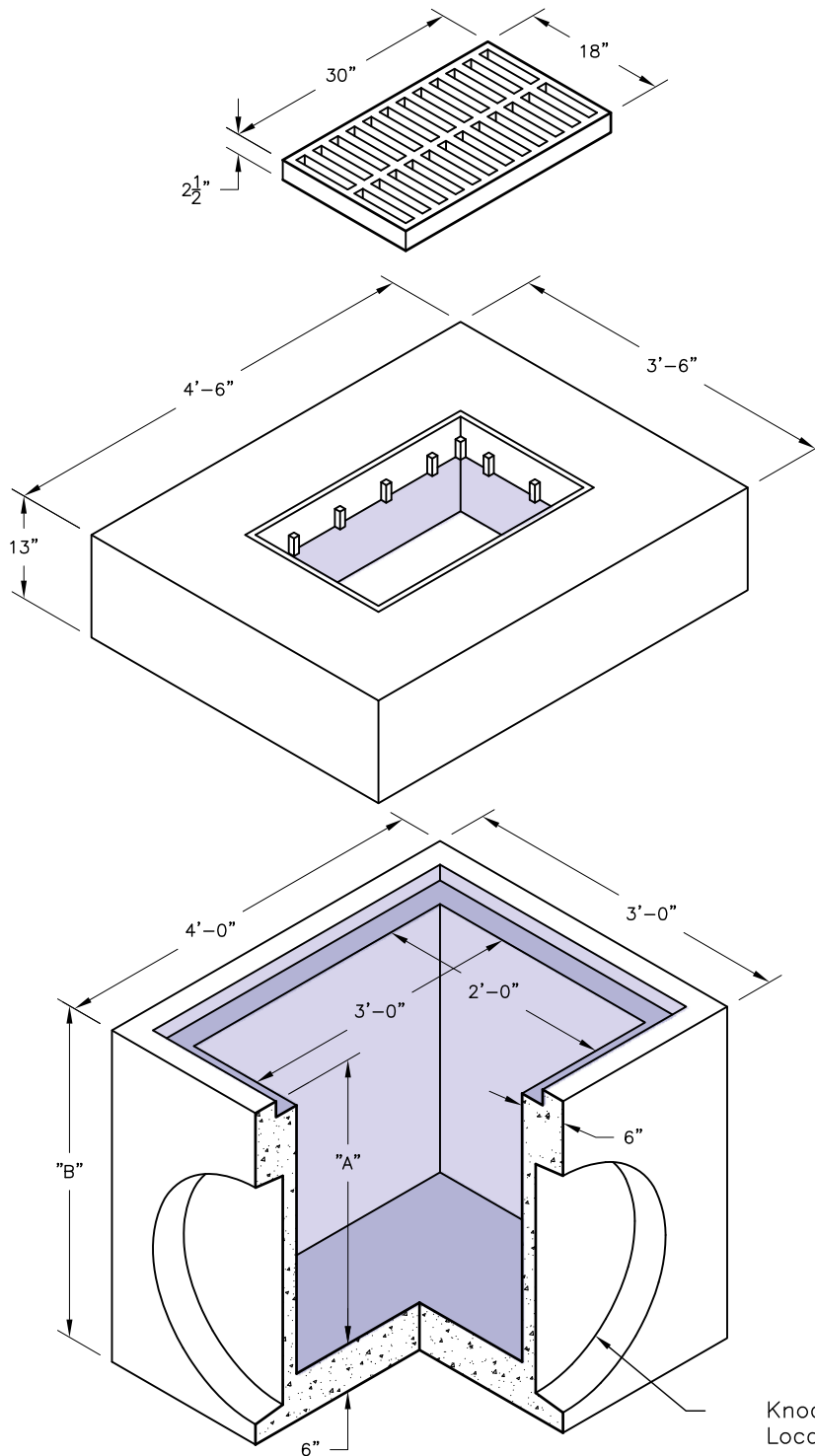
Weight — 160 Lb.  
Item# — 7103500

**SPECIFICATIONS:**

1. Concrete has a design strength of 5000 PSI at 28 days.
2. Steel reinforcement: ASTM A-615 Grade 60 or ASTM A-497 Welded wire fabric.
3. Loading: Designed for H20 Loading.
4. C.I. Castings: ASTM A-48, Class 30/35.

**Inlet Top W/ Frame**

Weight — 2150 Lb.  
Item# — 1202900



Body			
A	B	Weight	Item#
12"	18"	1800 Lbs.	1202920
24"	30"	2700 Lbs.	1202980
30"	36"	3150 Lbs.	1203020
36"	42"	3600 Lbs.	1203100
42"	48"	4050 Lbs.	1203140
60"	66"	5400 Lbs.	1203220

**Inlet Body**

Weight — See Table  
Item# — See Table

Knockout Size and Location will Vary per Customer Spec.