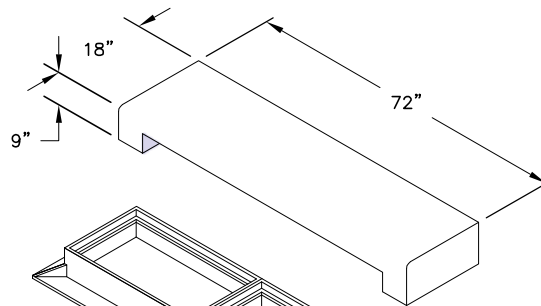
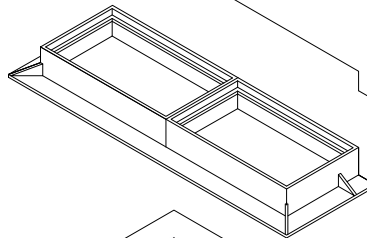


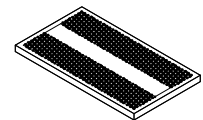
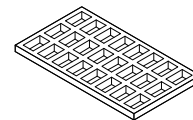
**Top**

Weight : 946 Lbs.


**Cast Iron Frame**

 \*Note: Grate or Plate  
 Available on Request.


Optional



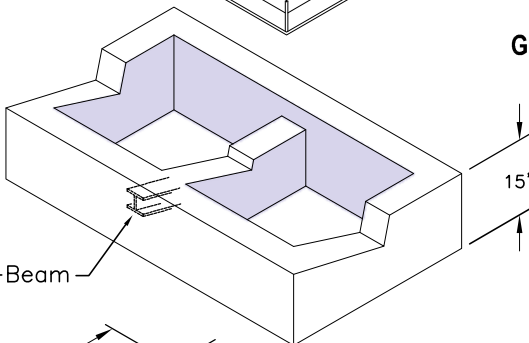
Grate

or

Plate

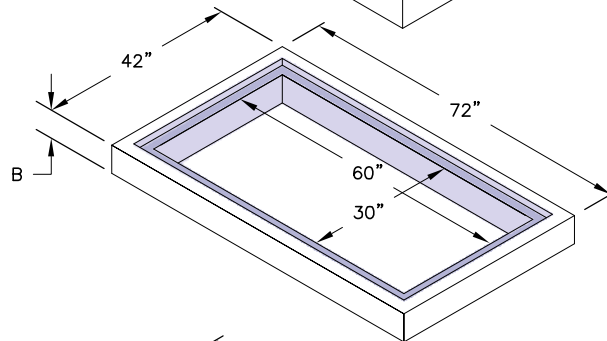
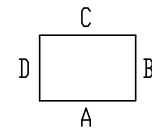
**15" Mid - Section**

Weight : 1,175 Lbs.


**Variable Riser**

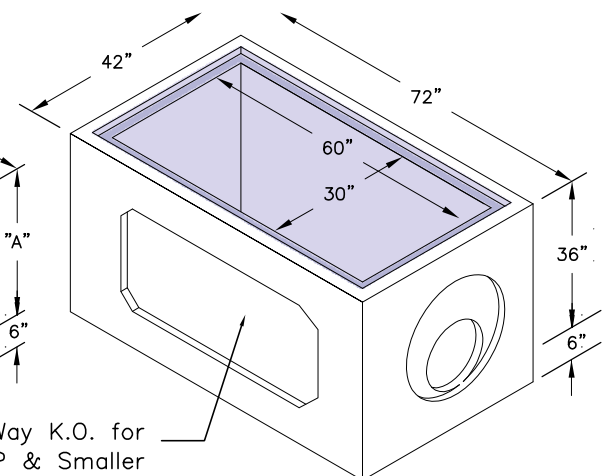
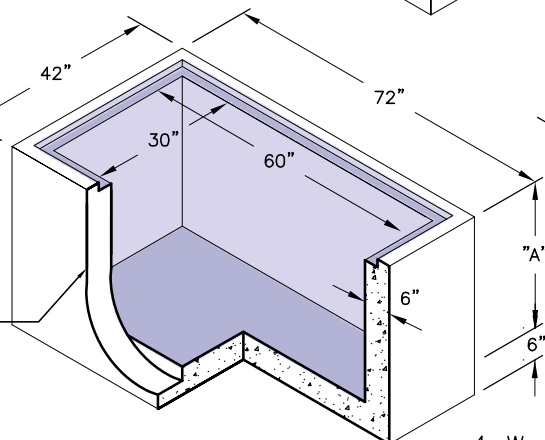
Weight : See Chart

Riser	
B	Weight (Lbs.)
6"	648
12"	1,275


**Typical Orientation**

**Bottom :**

Weight : See Chart

Bottom		
A	Weight (Lbs.)	Wall(s)
26"	4,021	A
32"	4,421	A
36"	4,082	4-Way

 32" Height for 24" R.C.P.  
 26" Height for 18" R.C.P.  
 (Typical Any Wall)

 4-Way K.O. for  
 24" RCP & Smaller  
 (Typical All Four Walls)

**GENERAL NOTES:**

1. Bedding Shall be in Accordance With Job and Plan Specifications.