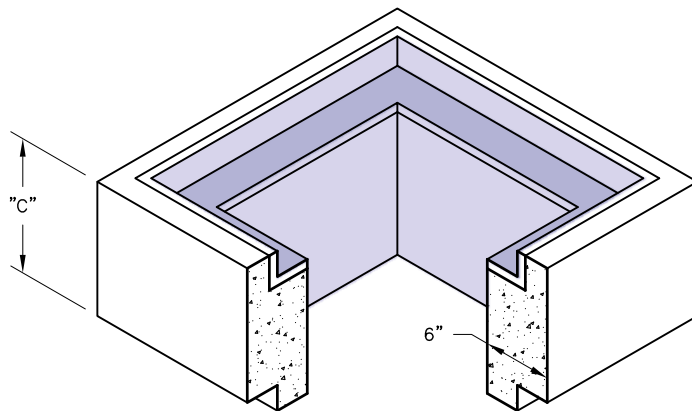


C.I. Grate

 Weight — 325 Lbs.
 Item# — 7108300

GENERAL NOTES:

1. Different Height of Extensions and Bodies are Available by Request.
2. Frames may be Cast in Extension or Body. Frames are Cast Iron or Steel.

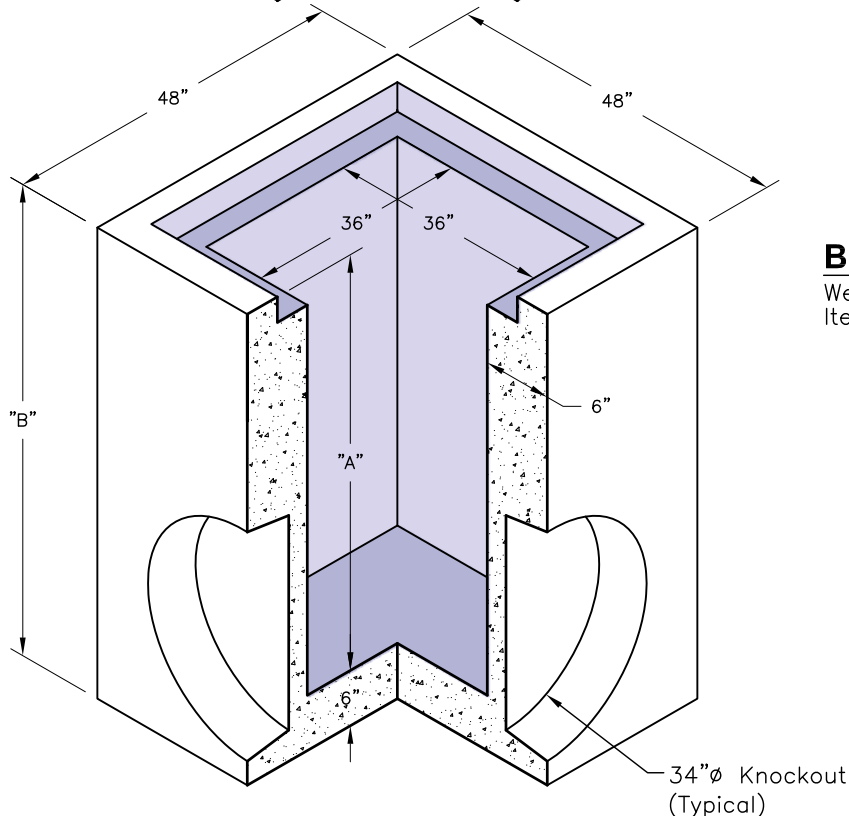


Extension w/ Frame

 Weight — See Table
 Item# — See Table

SPECIFICATIONS:

1. Concrete has a design strength of 5000 PSI at 28 days.
2. Steel reinforcement: ASTM A-615 Grade 60 or ASTM A-497 Welded wire fabric.
3. Loading: Designed for H20 Loading.
4. C.I. Castings: ASTM A-48, Class 30/35.



Body

 Weight — See Table
 Item# — See Table

Extension w/ Frame		
C	Weight	Item#
6"	525 Lbs.	1203480
12"	1050 Lbs.	1203540

Body w/ Frame			
A	B	Weight	Item#
12"	18"	2250 Lbs.	1203520
24"	30"	3300 Lbs.	1203660
30"	36"	3825 Lbs.	1203740
36"	42"	4350 Lbs.	1203780
42"	48"	4875 Lbs.	1203880
48"	54"	5400 Lbs.	1203960