
GENERAL NOTES:

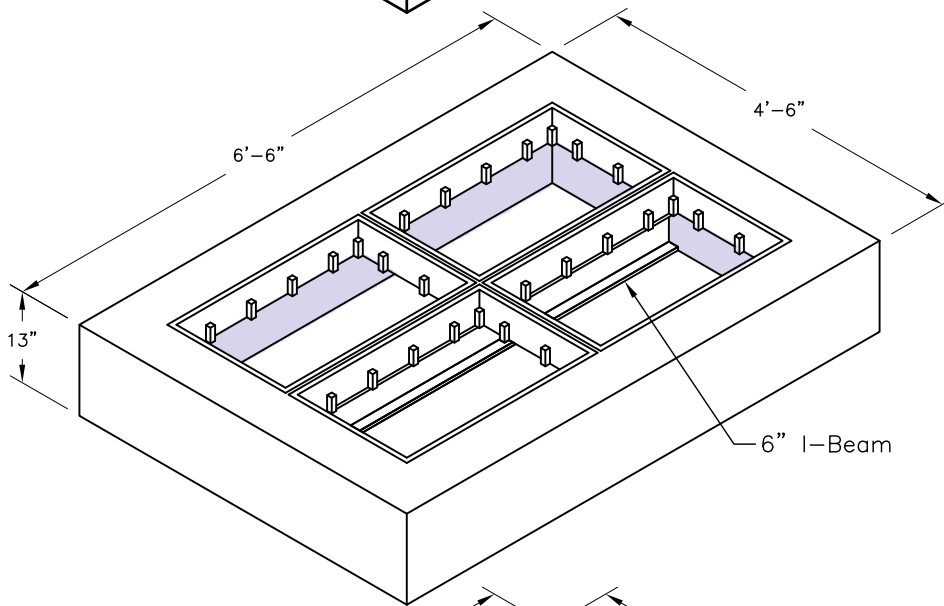
1. Different Height of Bodies are Available by Request.

(4) C.I. Grates

Weight — 160 Lb. Ea.
Item# — 7103500

SPECIFICATIONS:

1. Concrete has a design strength of 5000 PSI at 28 days.
2. Steel reinforcement: ASTM A-615 Grade 60 or ASTM A-497 Welded wire fabric.
3. Loading: Designed for H20 Loading.
4. C.I. Castings: ASTM A-48, Class 30/35.

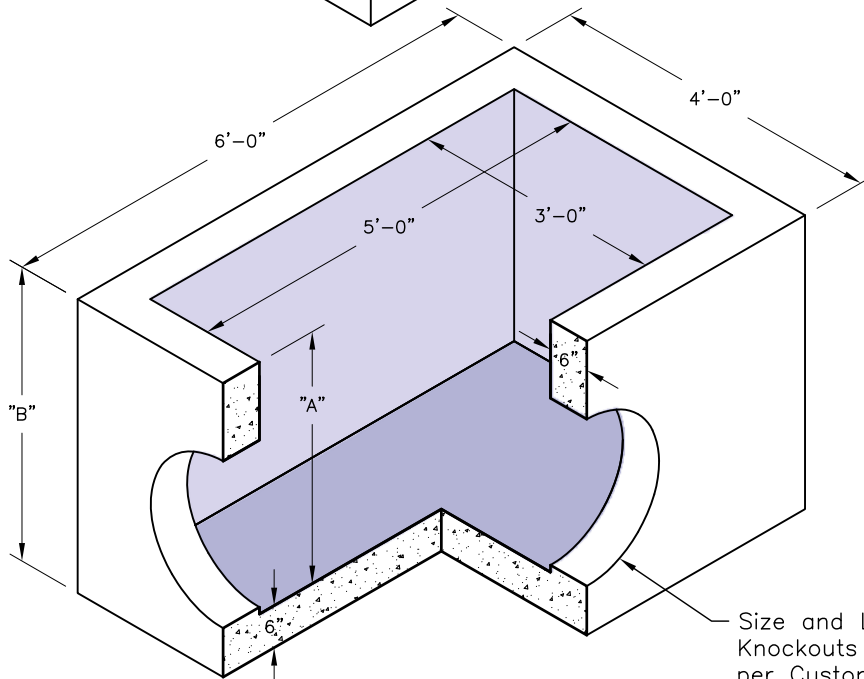

Inlet Top W/ 4 Frames

Weight — 2025 Lb.
Item# — 1207620

Body			
A	B	Weight	Item#
6"	12"	2475 Lbs.	1204160
12"	18"	3150 Lbs.	1204200
18"	24"	3825 Lbs.	1204220
24"	30"	4500 Lbs.	1204280
30"	36"	5175 Lbs.	1204320
36"	42"	5850 Lbs.	1204360
42"	48"	6525 Lbs.	1204400
54"	60"	7845 Lbs.	1204460
60"	66"	8500 Lbs.	1204480

Inlet Body

Weight — See Table
Item# — See Table



Size and Location of Knockouts or Blockouts per Customer Specifications