
PLAN VIEW
SPECIFICATIONS:

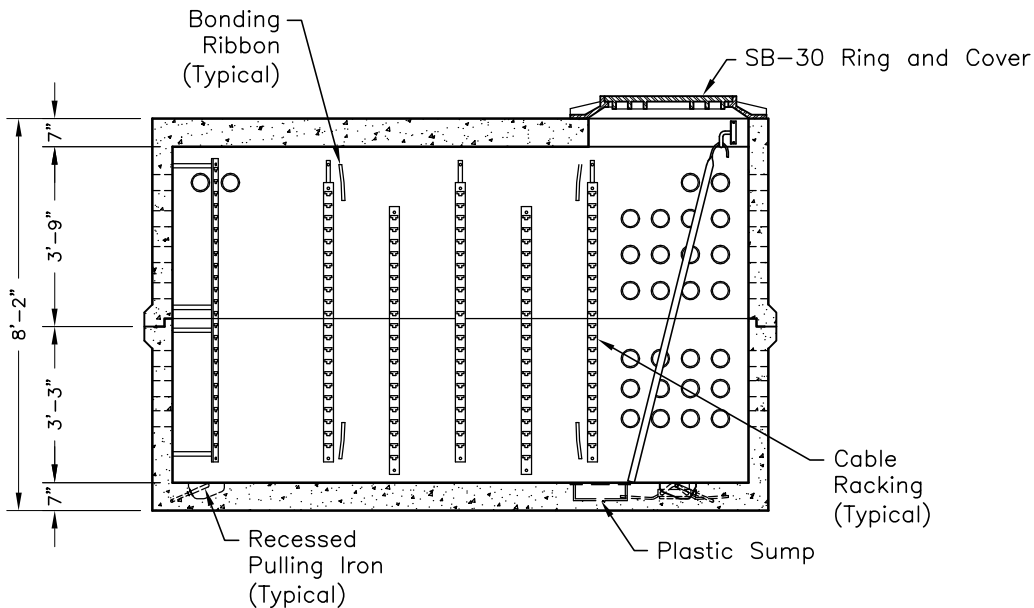
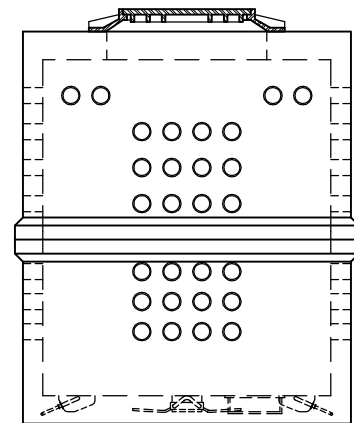
1. Concrete: Design Strength of 5000 PSI at 28 Days.
2. Steel Reinforcement: ASTM A-615 Grade 60.
3. Loading: Designed for HS-20 Loading.
4. C.I. Castings: ASTM A-48 Class 30/35.

GENERAL NOTES:

1. Collars Available as Required.
2. Round Cast Iron Frame and Cover Available as Required.

RACKING HARDWARE PACKAGE:

- 1 - 8' Ladder
- 1 - 17" Type "C" Ladder Step
- 16 - Corner Brackets
- 24 - "S" Straps
- 14 - 47-Hole Rack
- 40 - 1/2" x 11/2" Hex Bolts, Plated
- 40 - 1/2" Nuts, Plated
- 76 - 1/2" x 2" Hex Bolts, Plated


SECTION A-A

ELEVATION B-B