
24"Ø C.I. Cover

Weight — 138 Lbs.
Item# — 7104750

"Y" Top w/ Frame

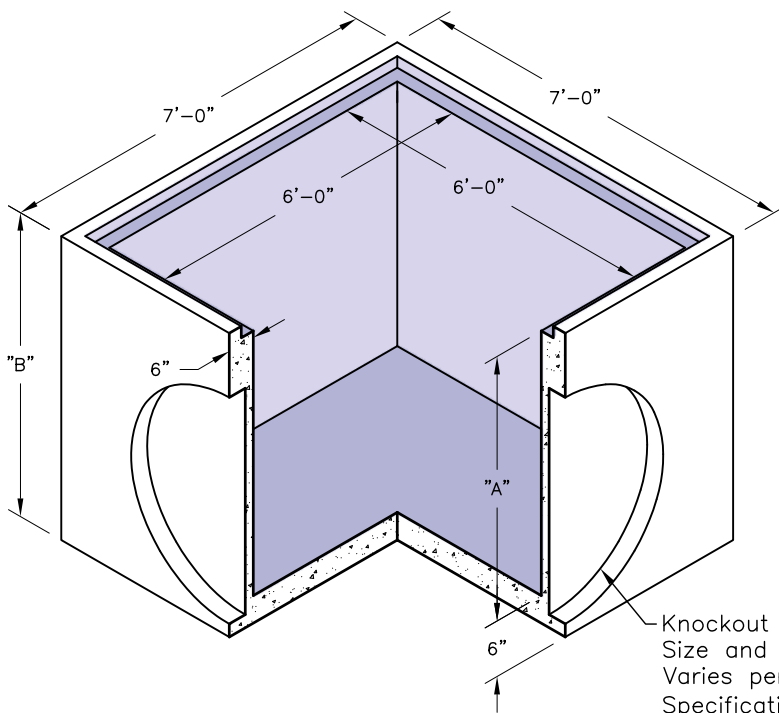
Weight — 4700 Lbs.
Item# — 1205960

GENERAL NOTES:

1. Different Height of Bodies are Available by Request.
2. Other Frames and Covers Also Available.

SPECIFICATIONS:

1. Concrete has a design strength of 5000 PSI at 28 days.
2. Steel reinforcement: ASTM A-615 Grade 60 or ASTM A-497 Welded wire fabric.
3. Loading: Designed for H20 Loading.
4. C.I. Castings: ASTM A-48, Class 30/35.


Body

Weight — See Table
Item# — See Table

Body			
A	B	Weight	Item#
36"	42"	9525 Lbs.	1206020
42"	48"	10,500 Lbs.	1206080
48"	54"	13,425 Lbs.	1206100