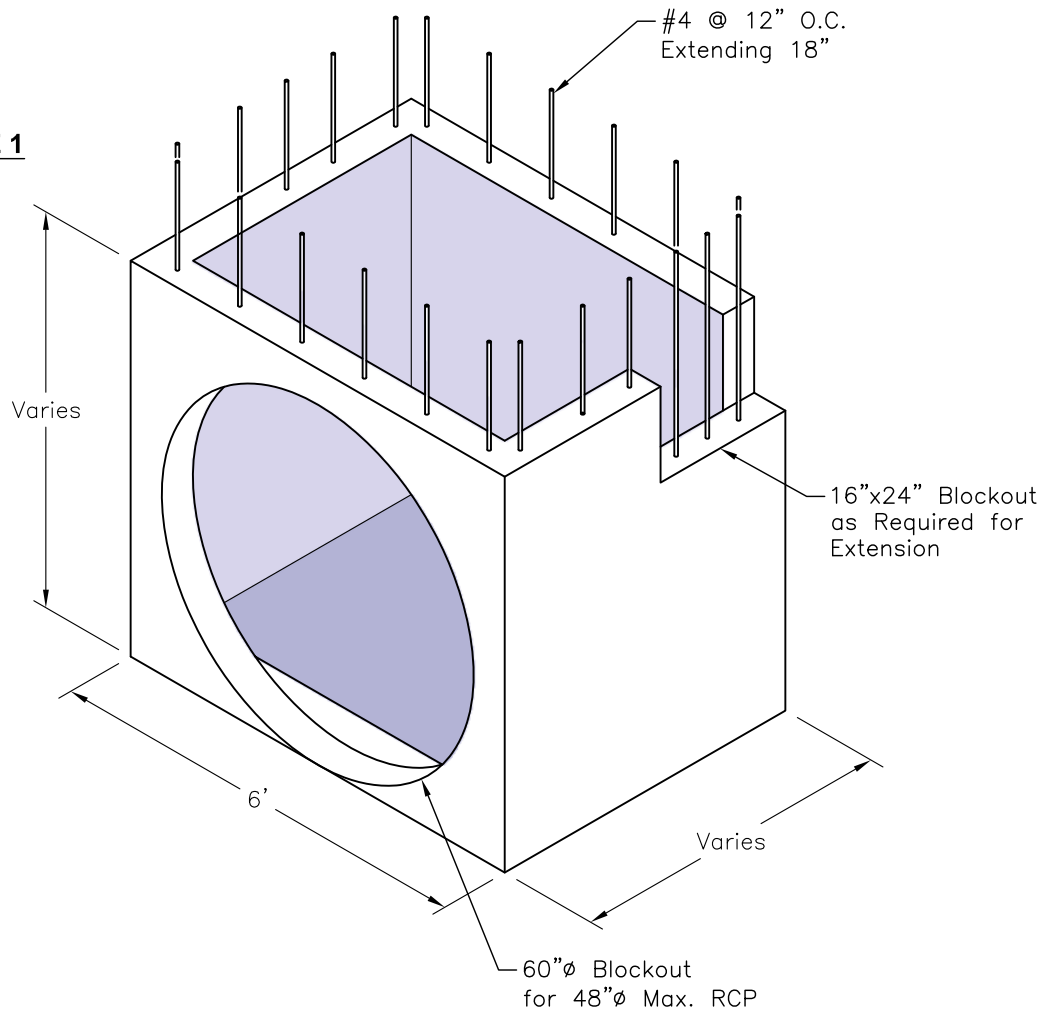


**CURB INLET  
TYPE I STAGE 1**



**SPECIFICATIONS:**

1. Concrete: Has a Design Strength of 5,000 psl at 28 Days.
2. Steel Reinforcement: ASTM A-615, Grade 60.
3. Loading: Designed for H20 Loading.

**GENERAL NOTES:**

1. Steps, Spaced 14", shall be Provided and Installed in all Inlets where the Distance from the Top of Curb to Flow Line Exceeds 4'-0".