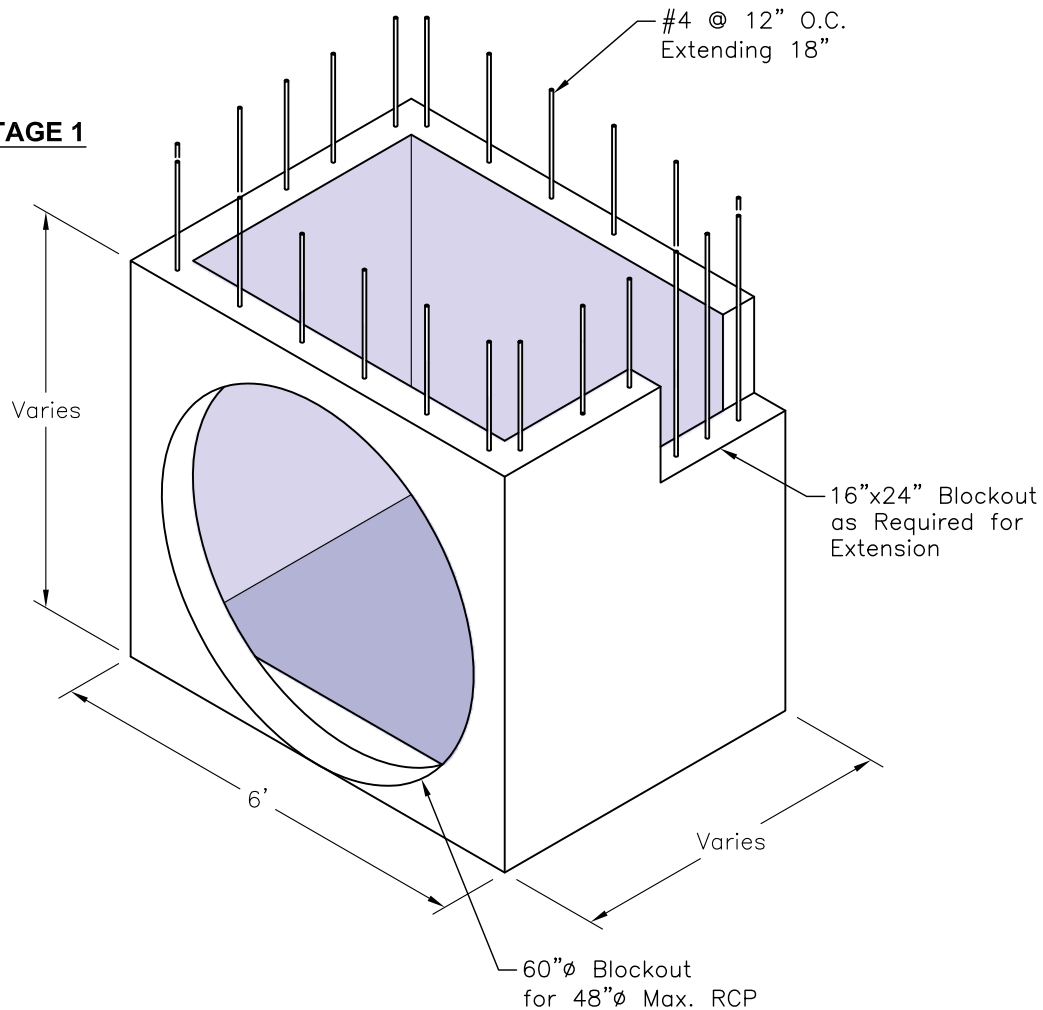


CURB INLET
TYPE II & V STAGE 1



SPECIFICATIONS:

1. **Concrete:** Has a Design Strength of 5,000 psl at 28 Days.
2. **Steel Reinforcement:** ASTM A-615, Grade 60.
3. **Loading:** Designed for H20 Loading.

GENERAL NOTES:

1. Steps, Spaced 14", shall be Provided and Installed in all Inlets where the Distance from the Top of Curb to Flow Line Exceeds 5'-0".