

GENERAL NOTES:

1. Different Height of Bodies are Available by Request.

SPECIFICATIONS:

1. Concrete has a design strength of 5000 PSI at 28 days.
2. Steel reinforcement: ASTM A-615 Grade 60 or ASTM A-497 Welded wire fabric.
3. Loading: Designed for H20 Loading.
4. C.I. Castings: ASTM A-48, Class 30/35.

C.I. Grate

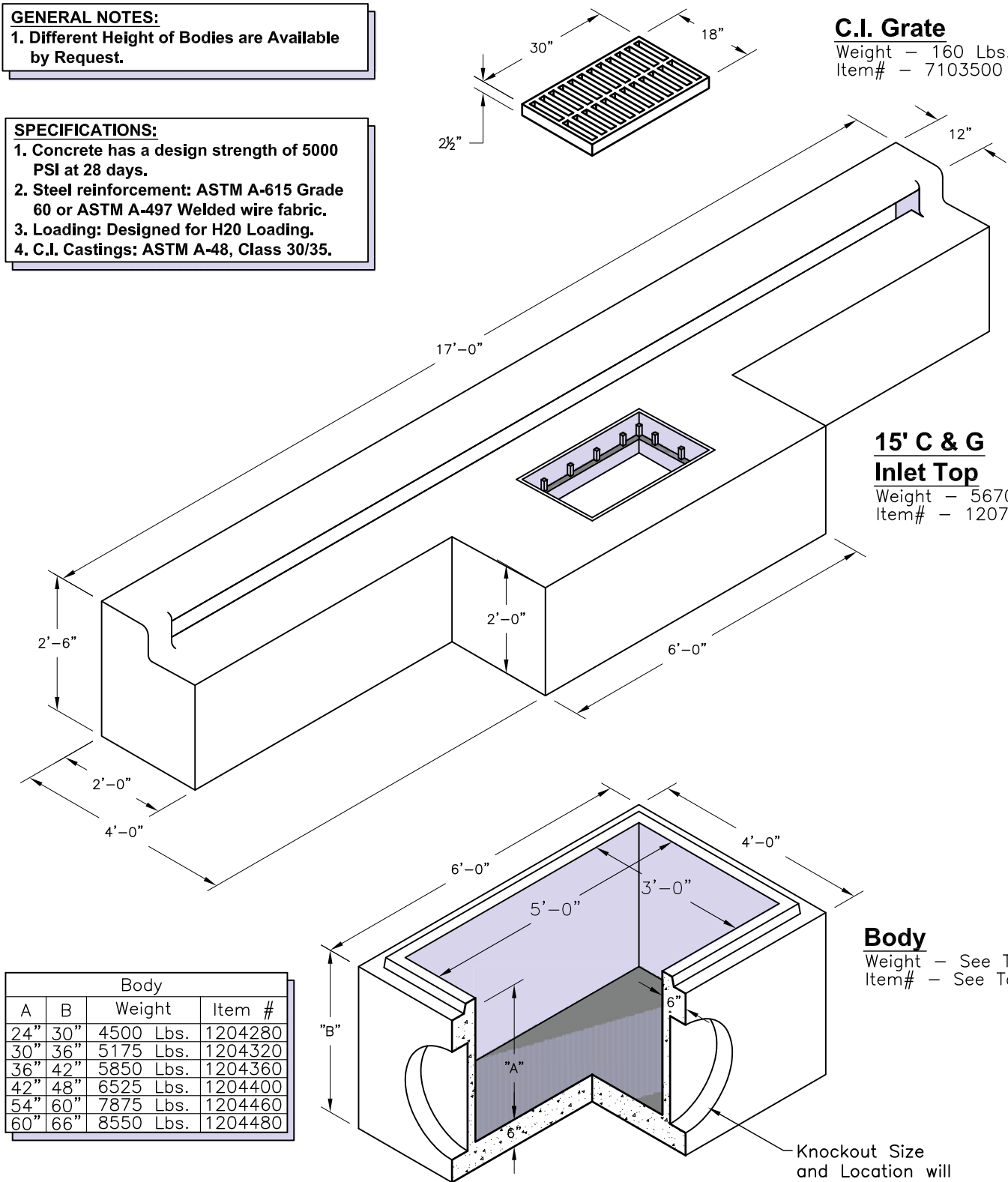
Weight - 160 Lbs.
Item# - 7103500

**15' C & G
Inlet Top**

Weight - 5670 Lbs.
Item# - 1207400

Body

Weight - See Table
Item# - See Table



Knockout Size
and Location will
Vary Per Cust. Spec.