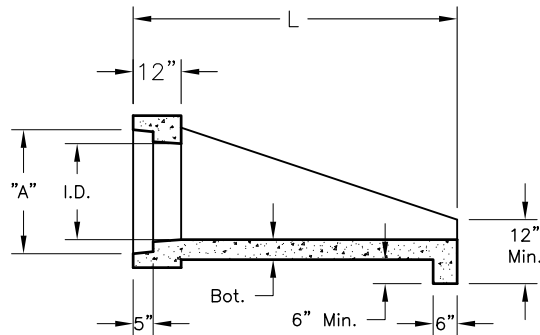
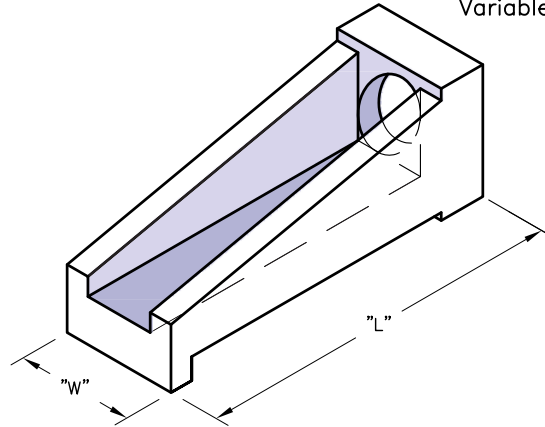
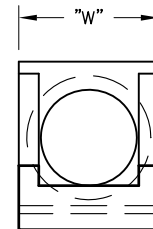


Safety-End-Treatment

Variable (See Chart)


ELEVATION VIEW

END VIEW
SPECIFICATIONS:

1. Concrete: Class "C" with design strength of 5000 PSI at 28 days.
2. Steel reinforcement: ASTM A-615 Grade 60 or ASTM A-497 Welded wire fabric.
3. Loading: Designed for H20 Loading.
4. C.I. Castings: ASTM A48, Class 30/35.
5. All exposed Corners shall be Chamfered 3/4".

Pipe I.D.	Slope	Weight	W	L	Wall	Bot.	A	Item#
12"	6:1	2327 Lbs.	26"	84"	5"	5"	18"	1223126
15"	6:1	2605 Lbs.	26"	84"	5"	5"	20"	1223020
18"	3:1	1750 Lbs.	30"	55"	5"	5"	24"	1223040
	4:1	2050 Lbs.	30"	68"	5"	5"	24"	1223060
24"	6:1	2800 Lbs.	30"	98"	5"	5"	24"	1223100
	3:1	3125 Lbs.	35"	81"	5"	5"	31"	1223140
30"	4:1	3850 Lbs.	35"	104"	5"	5"	31"	1223160
	6:1	4975 Lbs.	35"	150"	5"	5"	31"	1223200
30"	3:1	5225 Lbs.	46"	97"	6"	6"	38 1/2"	1223240
	4:1	6500 Lbs.	46"	125"	6"	6"	38 1/2"	1223260
	6:1	9200 Lbs.	46"	186"	6"	6"	38 1/2"	1223280