

ALL CONCRETE SHALL HAVE A 28 DAY COMPRESSIVE STRENGTH OF 4500 psi.

REINFORCING STEEL SHALL COMPLY WITH ASTM A615 GRADE 60, A706 GRADE 60 OR A497 GRADE 70. BAR BENDING AND PLACEMENT SHALL COMPLY WITH THE LATEST ACI STANDARDS

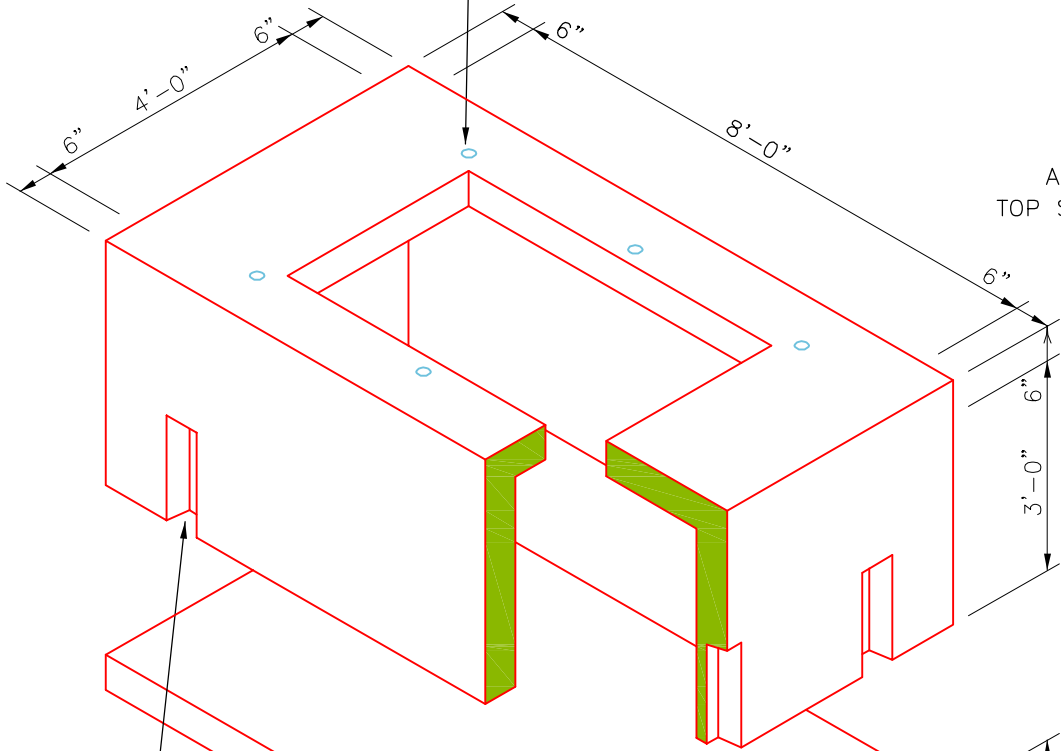
STANDARD STRUCTURAL DESIGN IS BASED ON AASHTO HS 20 WHEEL LOADING

WATER TABLE IS AT 3'-0" BELOW GRADE FOR STANDARD STRUCTURAL DESIGN

THE STANDARD DESIGN IS BASED ON THE TOP AT FINISHED GRADE ELEVATION.

TOP SECTION

INSERTS FOR COVER BOLTS FOR 36"x60" ACCESS COVER SEE COVER DETAILS FOR COVER FEATURES AVAILABLE.



APPROXIMATE TOP SECTION WEIGHT 8200 LBS.

6"x18" THINWALL KNOCKOUTS 2 EACH END AND 2 EACH SIDE

SLAB BOTTOM

APPROXIMATE SLAB BOTTOM WEIGHT 3400 LBS.

MINIMUM EXCAVATION 7'-0"x11'-0"



Oldcastle Precast

1900 Rilling Road San Antonio, TX 78214
Phone: (210) 923-4523 Fax: (210) 921-0473

48-H36-SKO

FILE NAME: 48H36SK.dwg

ISSUE DATE: March, 2005

www.oldcastlesanantonio.com

4'x8'x36" HANDHOLE WITH SLAB BOTTOM AND THINWALL KNOCKOUTS

Copyright 2005 Oldcastle Precast All Rights Reserved