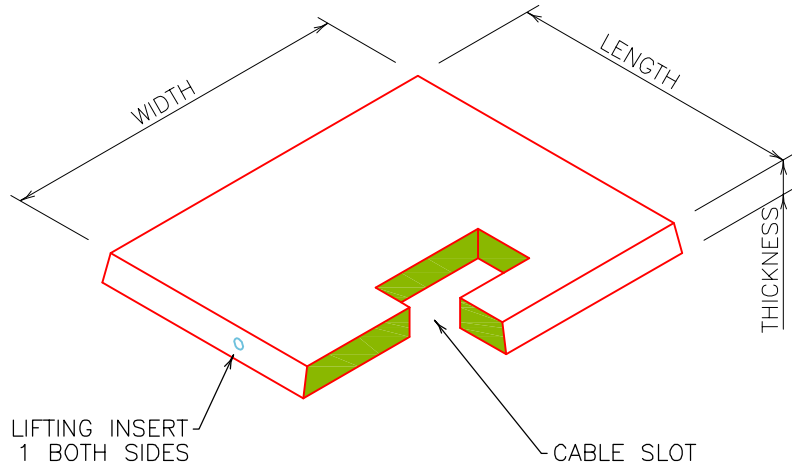


ALL CONCRETE SHALL HAVE A 28 DAY COMPRESSIVE STRENGTH OF 4500 psi.
 REINFORCING STEEL SHALL COMPLY WITH ASTM A615 GRADE 60, A706 GRADE 60 OR A497 GRADE 70.
 BAR BENDING AND PLACEMENT SHALL COMPLY WITH THE LATEST ACI STANDARDS



LENGTH	WIDTH	THICKNESS	SLOT SIZE	APPROXIMATE WEIGHT	
40"	40"	6"	8"x24"	800 LBS.	
40"	53"	4"	10"x28"	700 LBS.	
42"	42"	6"	12"x24"	800 LBS.	
44"	46"	6"	8"x24"	1000 LBS.	
42"	52"	6"	12"x24"	1000 LBS.	
44"	52"	6"	8"x24"	1100 LBS.	
44"	60"	6"	8"x24"	1300 LBS.	
48"	48"	4"	14"x32"	700 LBS.	
48"	60"	6"	12"x24"	1400 LBS.	
58"	58"	6"	12"x24"	1700 LBS.	
60"	72"	6"	12"x24"	2200 LBS.	
64"	80"	6"	10"x30"	2600 LBS.	
72"	72"	6"	10"x36"	2600 LBS.	
72"	96"	6"	15"x42"	3300 LBS.	
HLP-1	43"	43"	5"	11"x31"	700 LBS.
HLP-2	60"	60"	6"	12"x31"	1700 LBS.



Oldcastle Precast®

1900 Rilling Road San Antonio, TX 78214
 Phone: (210) 923-4523 Fax: (210) 921-0473

TRANSPAD

FILE NAME: TRANSPAD.dwg

ISSUE DATE: March, 2005

www.oldcastlesanantonio.com

TRANSFORMER PADS

Copyright 2005 Oldcastle Precast All Rights Reserved