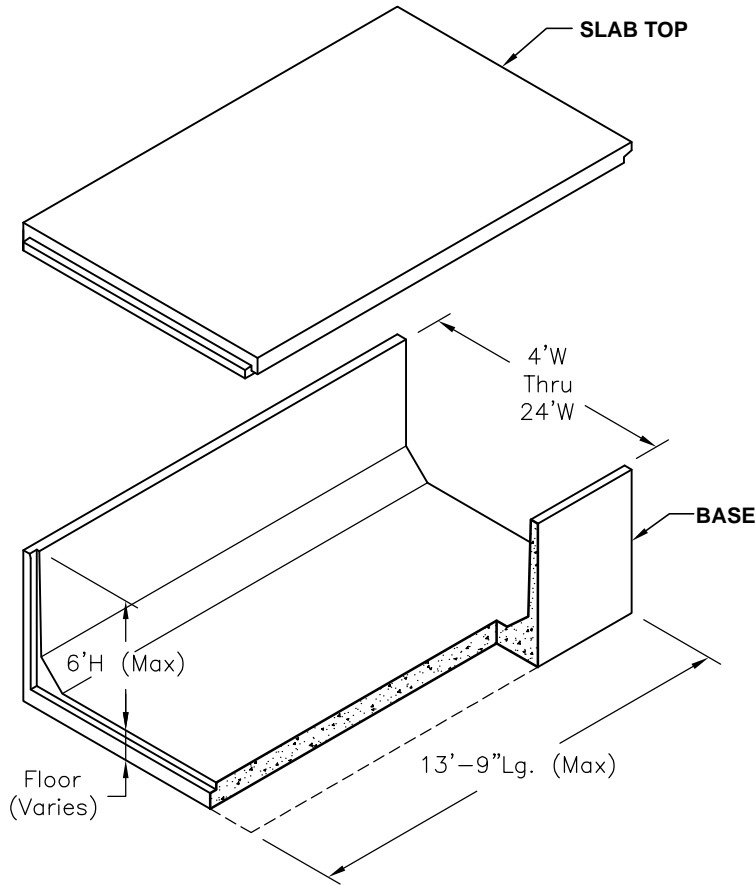
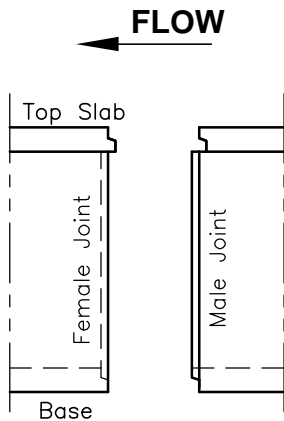


Notes:

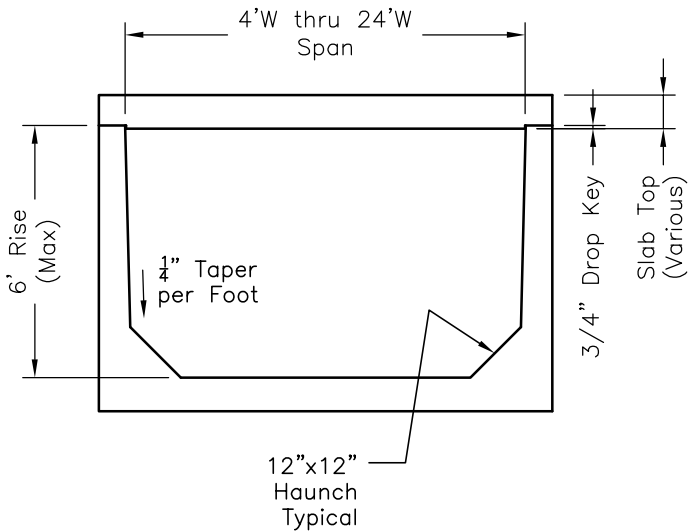
1. Precast Box Culvert Designed for the Following:
 - Load & Resistance Factor Design
 - Live Load = AASHTO HL-93 Truck
 - Earth Cover = ___'(min) to ___'(max)
2. Design Spec:
 - Loading Criteria Listed in Table X1:1, ASTM C1786 (Standard Specs for Segmental Precast Box Culverts),
 - AASHTO LRFD Bridge Design Specification.
3. Concrete Compressive Strength = 5,000 psi (min) at 28 Days.
4. Steel Reinforcing Yield Strength, $F_y = 60,000\text{psi}$ per ASTM A615.
5. Joint to be Sealed with Con-Seal Joint Sealant & Con-Wrap, Unless Noted Otherwise.
6. Base Material and Back Fill per Local Requirements.



ISOMETRIC VIEW



SIDE VIEW



FRONT VIEW

SCALE: 3/16" = 1'-0"



4905 Stough Road, Concord, North Carolina 28027
Phone: 704-788-4050 Fax: 704-788-4060

BC-TYPE1

FILE NAME: 462DBSTYPE1.DWG

ISSUE DATE: April, 2005

www.oldcastleconcord.com

**Type 1 Split
Box Culvert**

Copyright © 2005 Oldcastle Precast, Inc.