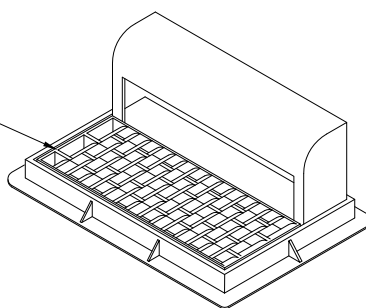


# 2'x3' Basin

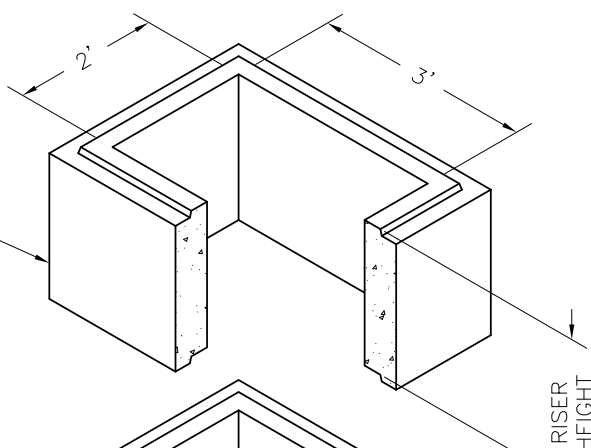
2'x3' Catch Basin  
Bases and Risers



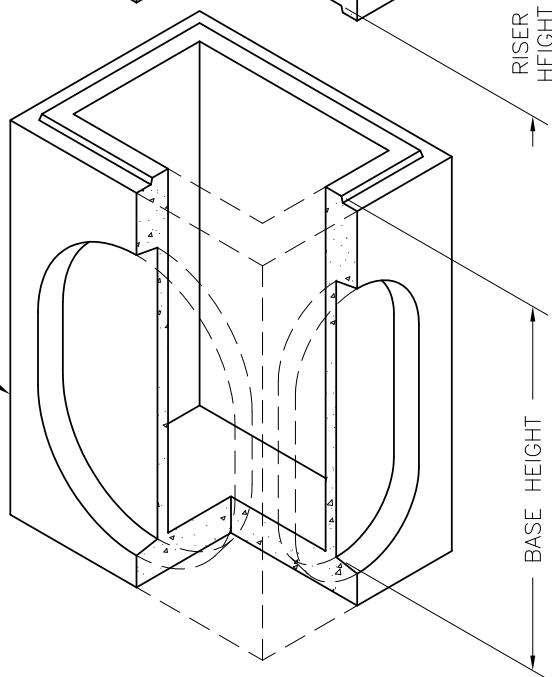
CURB BACK F&G



2' X 3' RISER



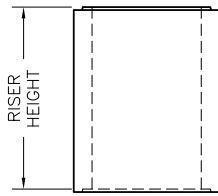
2' X 3' BASE



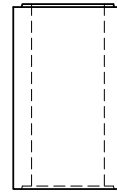
HEIGHT	WEIGHTS	
	BASE	RISER
6"		449 #
1'		899 #
2'		1,799 #
3'	2,977 #	2,700 #
4'	3,291 #	3,600 #
5'	3,918 #	

## NOTES:

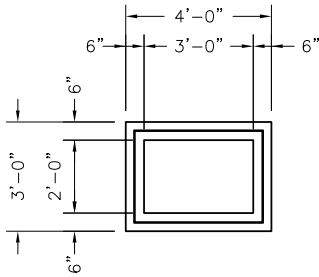
1. Vault design complies with ASTM C-857 and C-858 with less than 2' of earth cover and an AASHTO HS-20 loading.
2. Lifting insert type and location may change without notice.



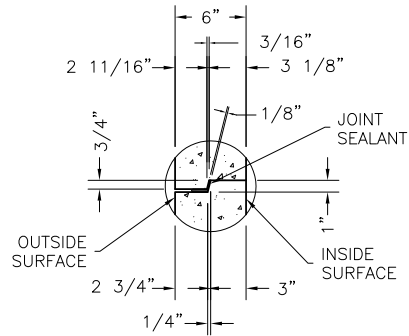
**2' X 3' CATCH BASIN RISER  
SIDE ELEVATION**



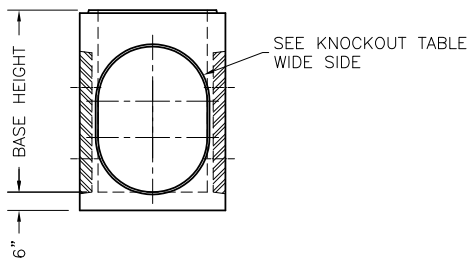
**2' X 3' CATCH BASIN RISER  
SIDE ELEVATION**



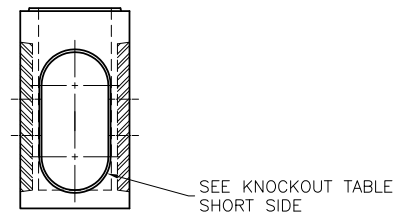
**2' X 3' CATCH BASIN  
PLAN VIEW**



**JOINT DETAIL**

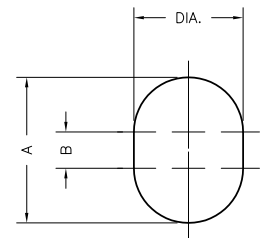


**2' X 3' CATCH BASIN BASE  
SIDE ELEVATION**



**2' X 3' CATCH BASIN BASE  
END ELEVATION**

BASE HEIGHT	WIDE SIDE KNOCKOUT DIMENSIONS			SHORT SIDE KNOCKOUT DIMENSIONS		
	DIA.	A	B	DIA.	A	B
3'	27"	27"	0"	22"	22"	0"
4'	35"	35"	0"	22"	34"	12"
5'	36"	48"	12"	22"	45"	23"



KNOCKOUTS ARE 4" DEEP

**Oldcastle Precast**  
801 West 12th Street  
Ogden, Utah 84404

Phone: (801) 399-1171  
Fax: (801) 392-7849

For more information about our products, please visit  
**oldcastleprecast.com**

*oldcastleprecast.com*