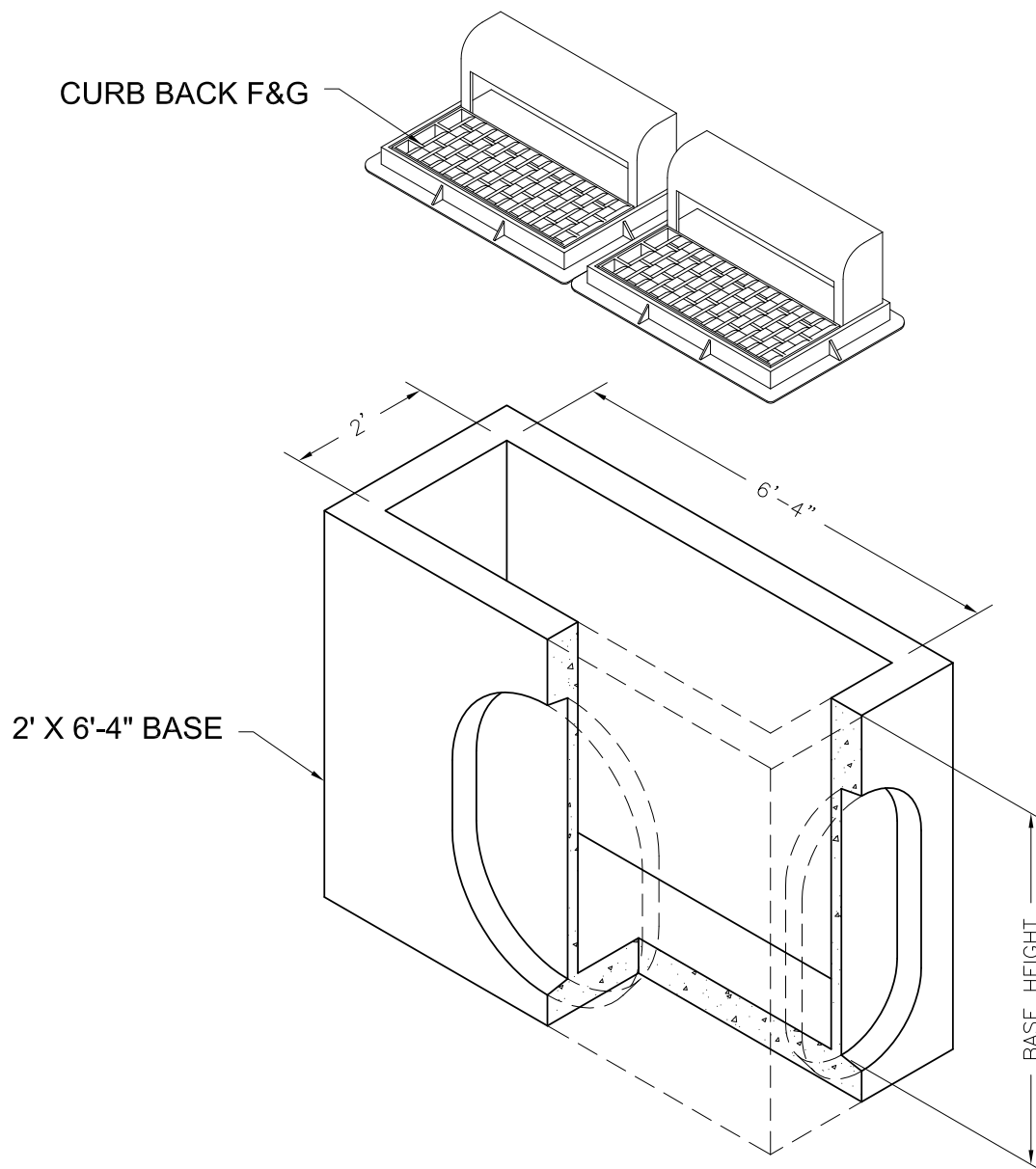


2'x6'4" Basin

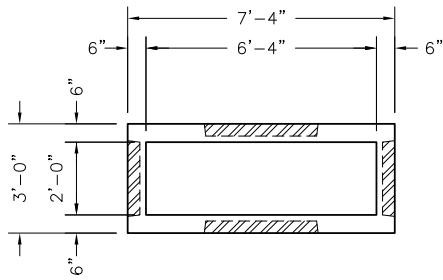
2'x6'4" Catch Basin
Bases



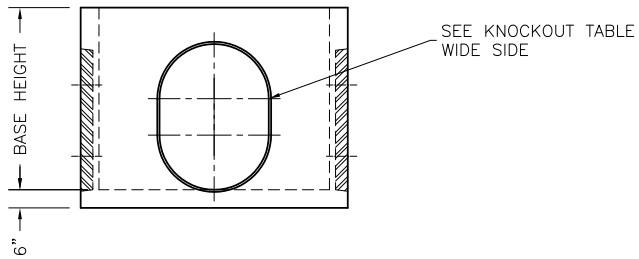
HEIGHT	WEIGHT
4'	3,291 #
5'	3,918 #

NOTES:

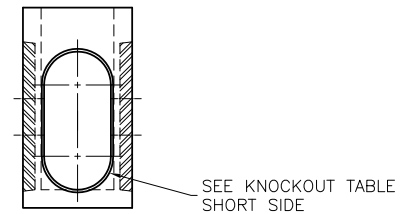
1. Vault design complies with ASTM C-857 and C-858 with less than 2' of earth cover and an AASHTO HS-20 loading.
2. Lifting insert type and location may change without notice.



**2' X 6'-4" CATCH BASIN
PLAN VIEW**

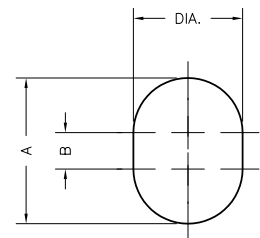


**2' X 6'-4" CATCH BASIN
SIDE ELEVATION**



**2' X 6'-4" CATCH BASIN
END ELEVATION**

BASE HEIGHT	WIDE SIDE KNOCKOUT DIMENSIONS			SHORT SIDE KNOCKOUT DIMENSIONS		
	DIA.	A	B	DIA.	A	B
4'	36"	36"	0"	24"	24"	0"
5'	36"	48"	12"	24"	36"	12"



KNOCKOUTS ARE 4" DEEP

Oldcastle Precast
801 West 12th Street
Ogden, Utah 84404

Phone: (801) 399-1171
Fax: (801) 392-7849

For more information about our products, please visit
oldcastleprecast.com

oldcastleprecast.com