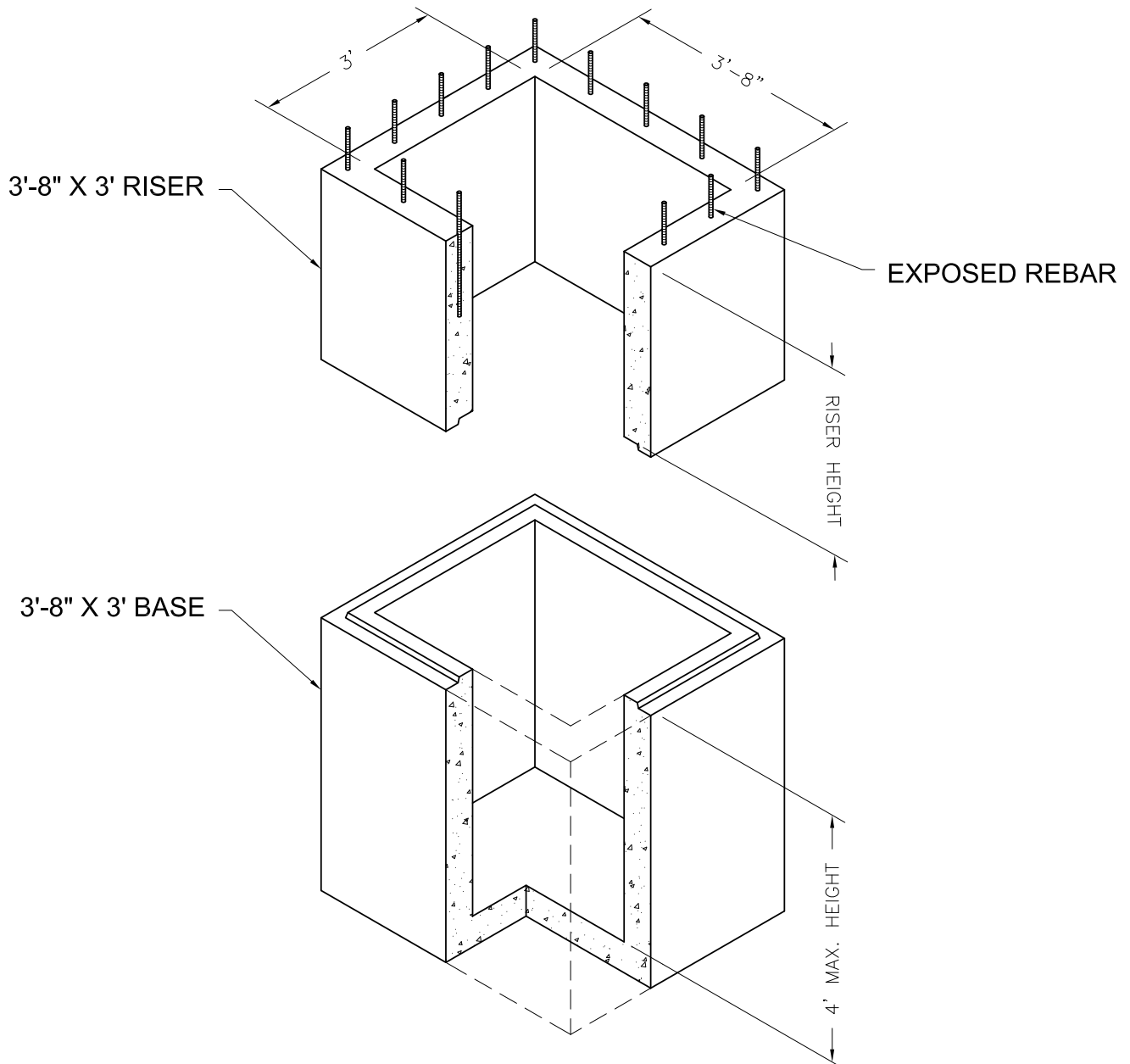


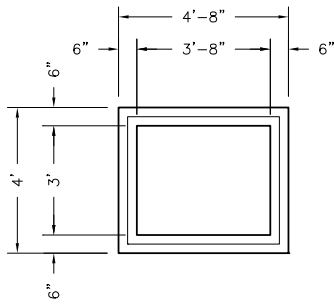
# 3'8"x3' Basin

3'8"x3' Catch Basin  
Bases and Risers  
USDOT CB9 "A" line 1-18

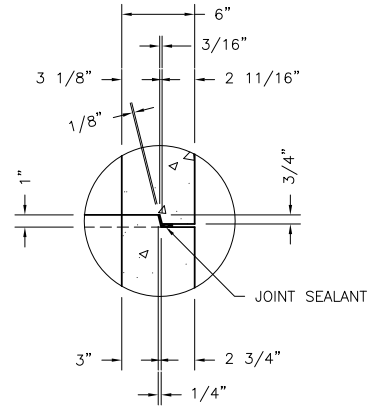


## NOTES:

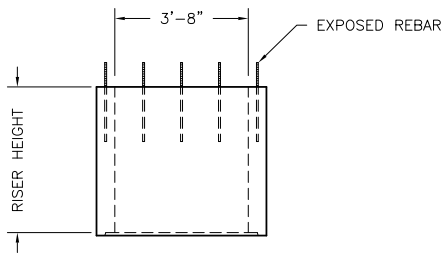
1. Vault design complies with ASTM C-857 and C-858 with less than 2' of earth cover and an AASHTO HS-20 loading.
2. Lifting insert type and location may change without notice.



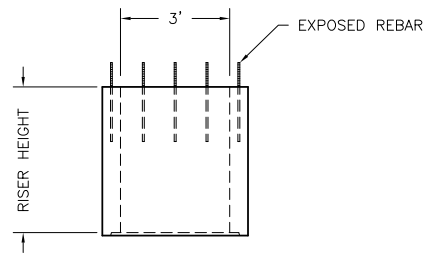
**3'x3'-8" CATCH BASIN BASE / RISER  
PLAN VIEW**



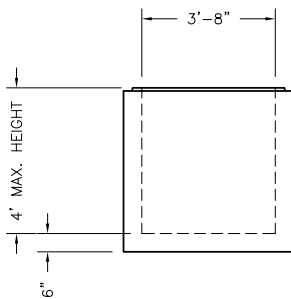
**JOINT DETAIL**



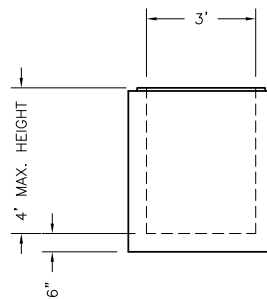
**3'x3'-8" CATCH BASIN RISER  
WIDE SIDE ELEVATION VIEW**



**3'x3'-8" CATCH BASIN RISER  
SHORT SIDE ELEVATION VIEW**



**3'x3'-8" CATCH BASIN BASE  
WIDE SIDE ELEVATION VIEW**



**3'x3'-8" CATCH BASIN BASE  
SHORT SIDE ELEVATION VIEW**

**Oldcastle Precast**  
801 West 12th Street  
Ogden, Utah 84404

Phone: (801) 399-1171  
Fax: (801) 392-7849

For more information about our products, please visit  
**oldcastleprecast.com**

*oldcastleprecast.com*