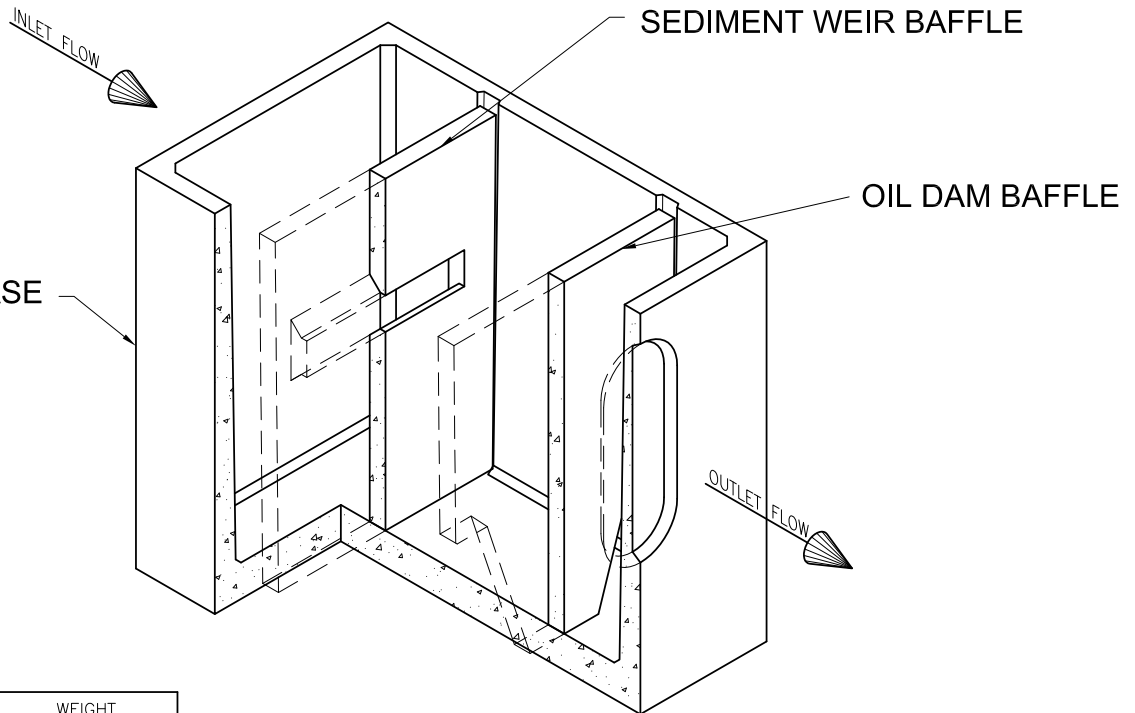
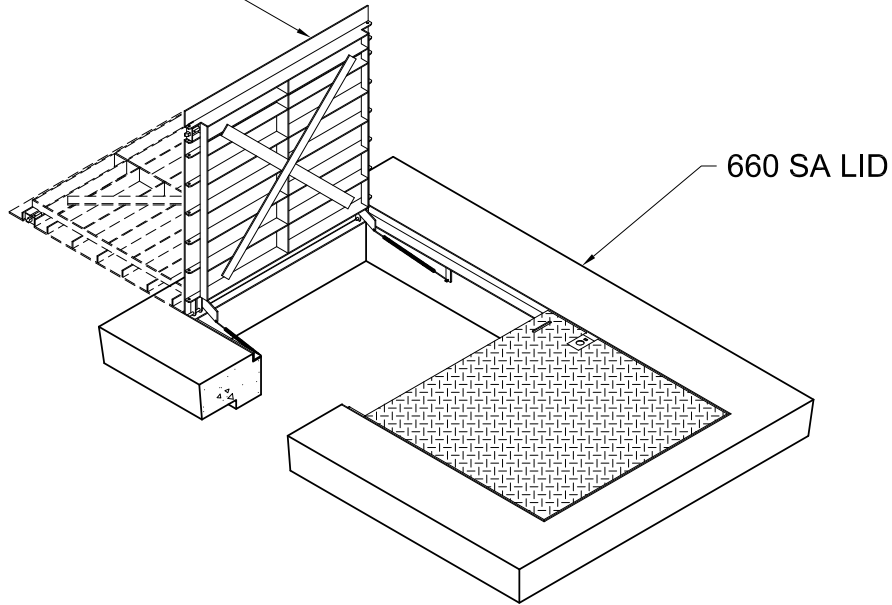


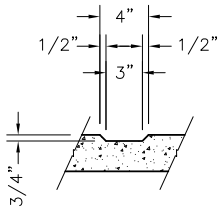
332p FRAME & COVER



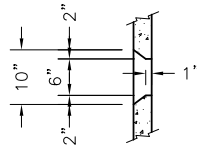
SECTION	WEIGHT
FRAME & COVER	332 #
LID	992 #
WEIR	624 #
DAM	490 #
BASE	5,362 #
TOTAL WEIGHT	7,800 #

NOTES:

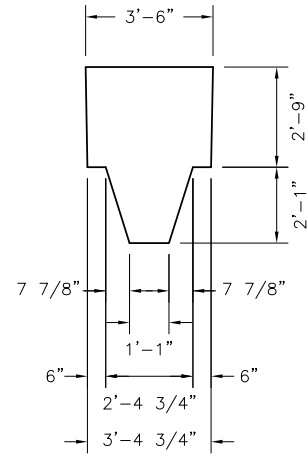
1. Vault design complies with ASTM C-857 and C-858 with less than 2' of earth cover and an AASHTO HS-20 loading.
2. 575 Gallon capacity is at a 4' water depth.
3. Contractor to grout baffles in place.
4. Contractor to fill all lift insert recesses with grout prior to backfill.
5. Contractor must fill the Separator unit with clean water before it is put into service.
6. Lifting insert type and location may change without notice.



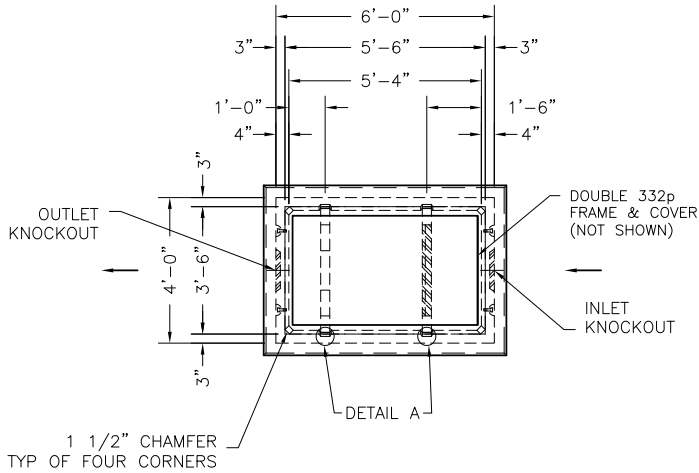
DETAIL A



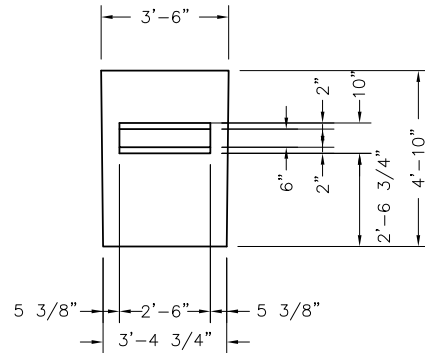
WEIR OPENING SECTION DETAIL



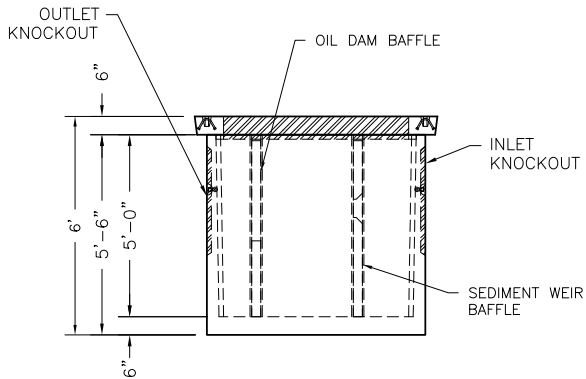
OIL DAM Baffle ELEVATION VIEW (OUTLET SIDE)



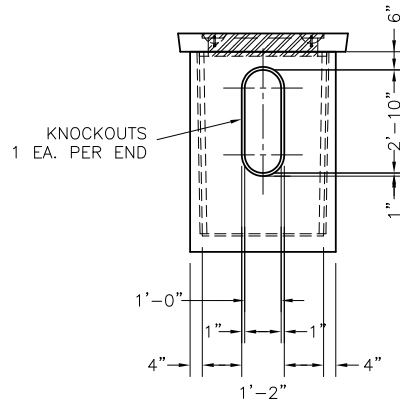
PLAN VIEW



SEDIMENT WEIR Baffle ELEVATION VIEW (INLET SIDE)



ELEVATION VIEW



END VIEW

Oldcastle Precast
801 West 12th Street
Ogden, Utah 84404

Phone: (801) 399-1171
Fax: (801) 392-7849

For more information about our products, please visit
oldcastleprecast.com

oldcastleprecast.com