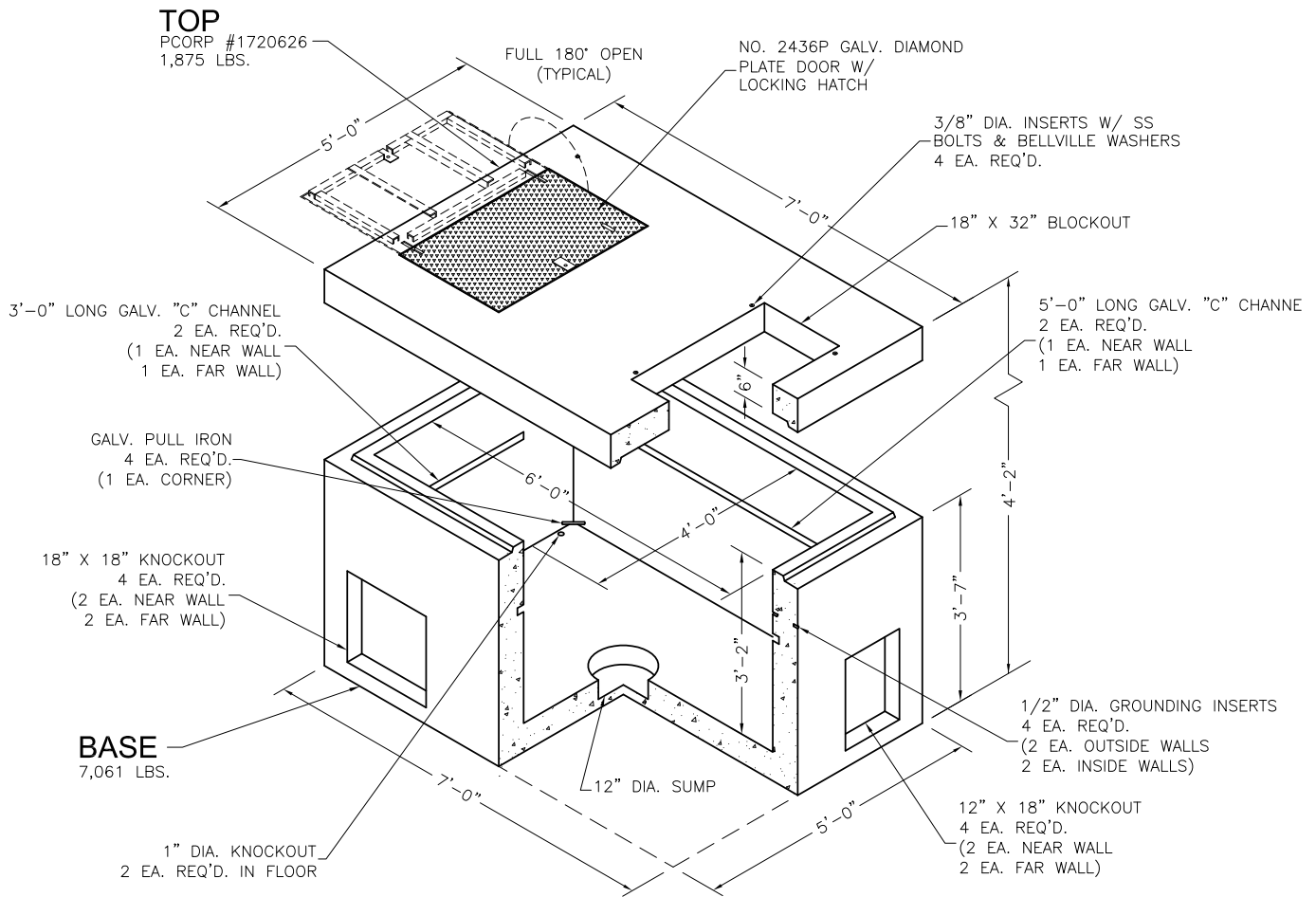


GV 231 x

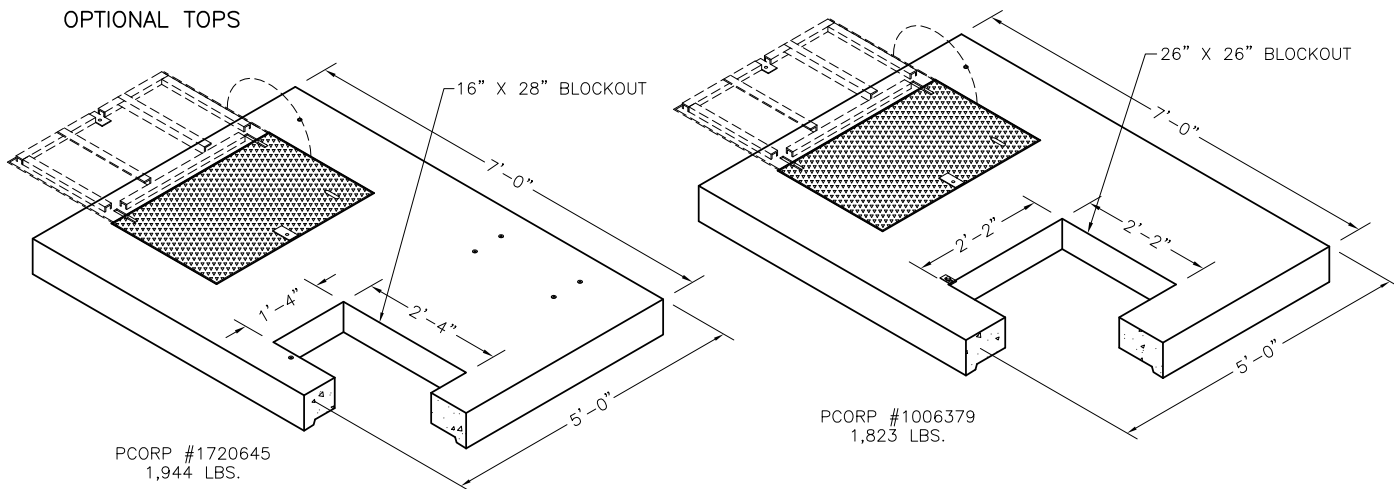
*4'x6' Padvault
Single Phase
Pacifcorp*

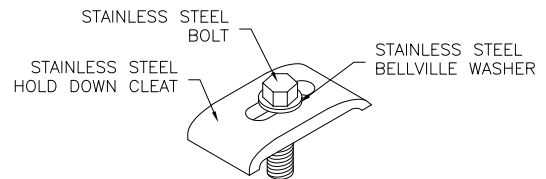
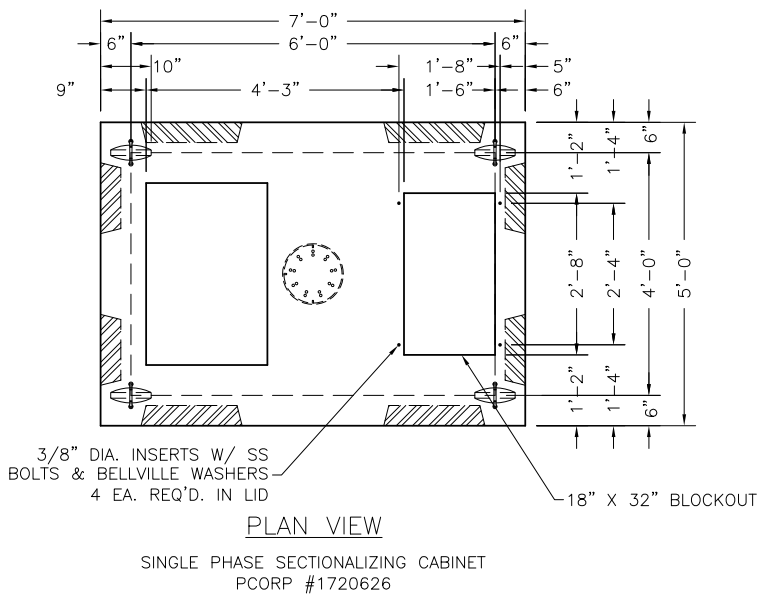
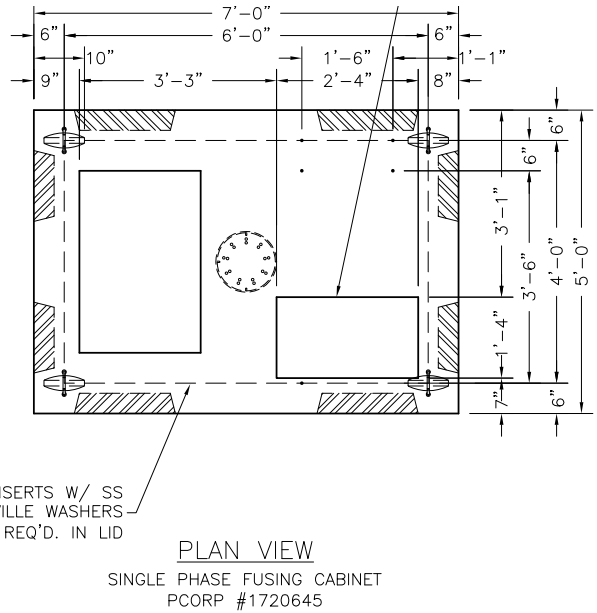
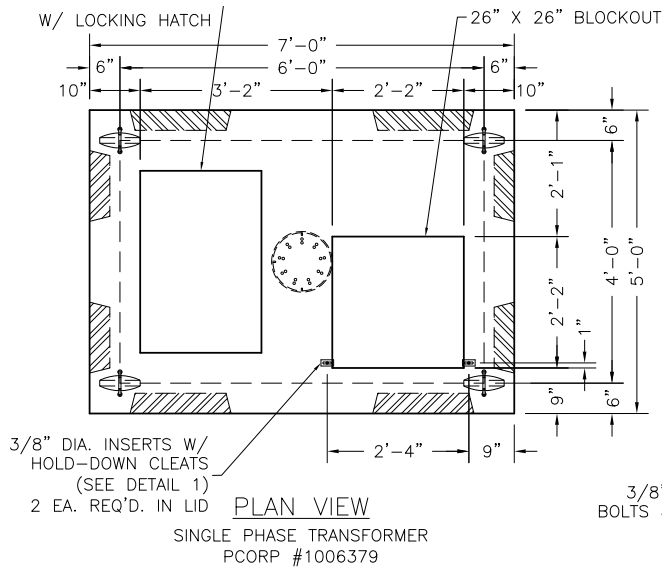


SINGLE PHASE SECTIONALIZING CABINET PADVAULT, STOCK ITEM 1720626
SINGLE PHASE FUSING CABINET PADVAULT, STOCK ITEM 1720645
SINGLE PHASE TRANSFORMER PADVAULT, STOCK ITEM 1006379



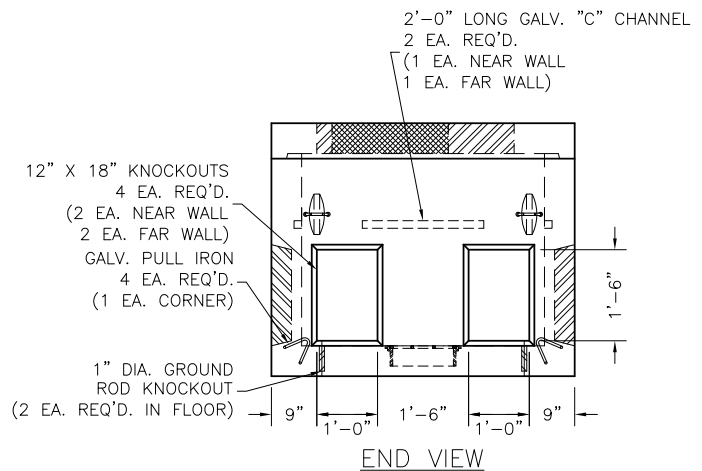
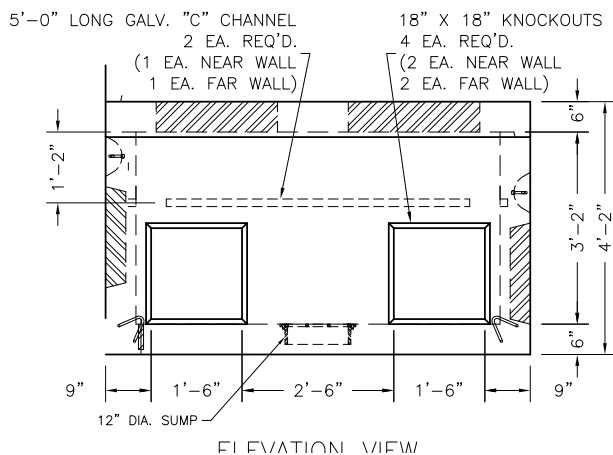
OPTIONAL TOPS





**HOLD DOWN CLEAT
DETAIL 1**

1 1/4" X 2 1/2" STAINLESS STEEL HOLD-DOWN CLEAT - 2 REQ'D.
3/8" X 1 1/4" STAINLESS STEEL BOLT - 2 REQ'D.
3/8" STAINLESS STEEL BELLVILLE WASHER - 2 REQ'D.



*LIFTING DEVICE TYPE & LOCATION MAY CHANGE WITHOUT NOTICE

Oldcastle Precast
801 West 12th Street
Ogden, Utah 84404

Phone: (801) 399-1171
Fax: (801) 392-7849

For more information about our products, please visit
oldcastleprecast.com

oldcastleprecast.com